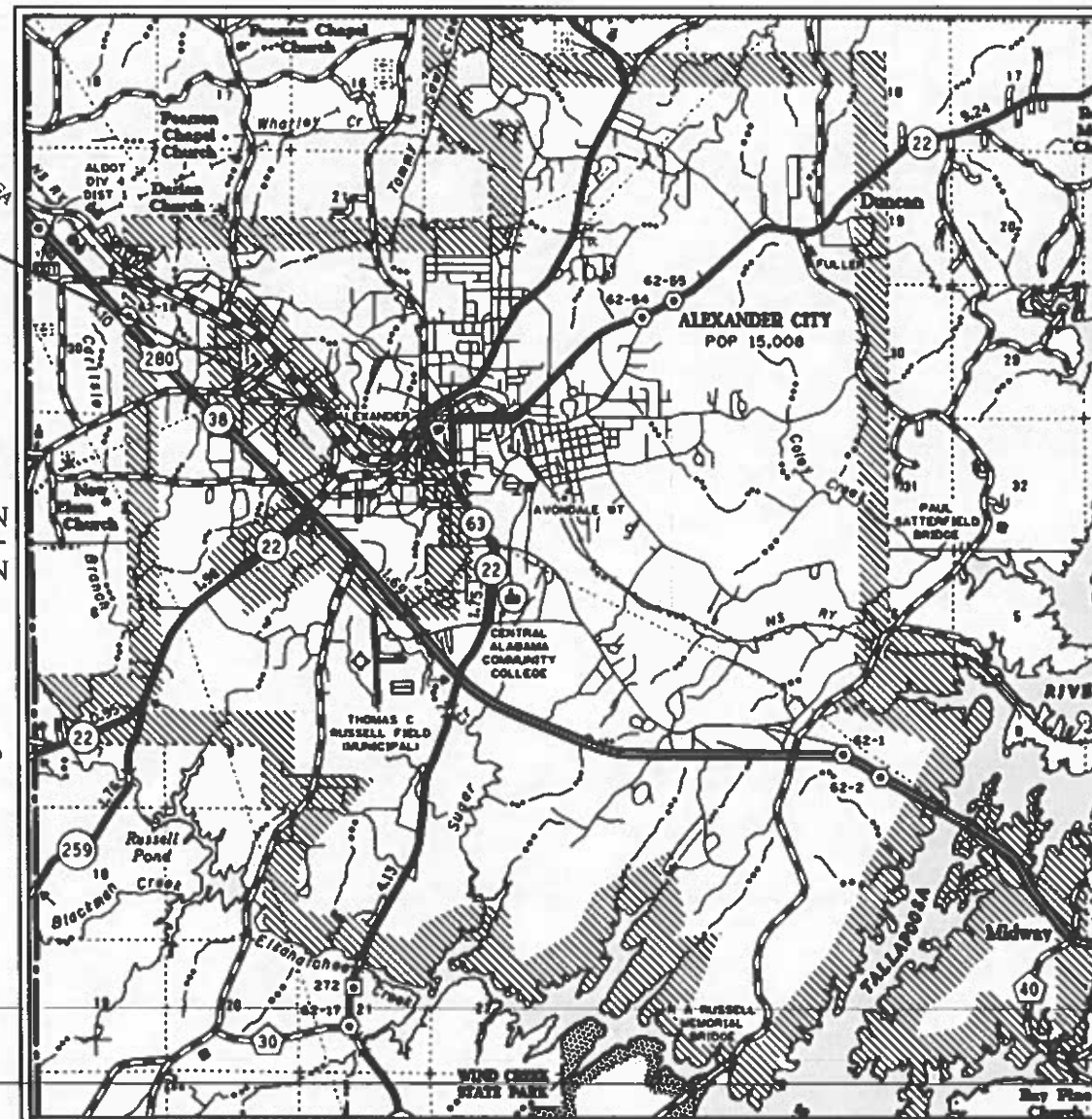


PROJECT REFERENCE	FISCAL YEAR	SHEET NO	LAST SHEET
ACRIP RESURFACING	2024	1	19

# CITY OF ALEXANDER CITY

PLANS OF PROPOSED PROJECT:  
 ACRIP FY 24  
 RESURFACING CITY STREETS - VARIOUS  
 ALEXANDER CITY, ALABAMA  
 TALLAPOOSA COUNTY

PROJECT LOCATION



EQUATIONS AND EXCEPTIONS

NONE

TNSHP 23N  
 TNSHP 22N

VICINITY MAP  
 NOT TO SCALE

RNG 21E | RNG 22E

	FEET	MILE
NET LENGTH OF PROJECT	88,433	16.748

## INDEX TO SHEETS

SHEET NO.	DESCRIPTION
1	TITLE SHEET
2	PROJECT NOTES
3	SUMMARY OF QUANTITIES
3-19	SITE DETAIL SHEETS

APPROVED:

CITY ENGINEER

# PROJECT NOTES

PROJECT REFERENCE	FISCAL YEAR	SHEET NO	LAST SHEET
ACRIP RESURFACING	2024	2	19

- 200 SPECIFICATIONS FOR THE PROJECT AND ALL WORK SHALL COMPLY WITH THE ALABAMA DEPARTMENT OF TRANSPORTATION (ALDOT), STANDARD SPECIFICATIONS FOR HIGHWAY CONSTRUCTION, 2022, UNLESS OTHERWISE SPECIFIED.
  
- 201 THE REQUIREMENT FOR PAVEMENT DENSITY TESTING IS WAIVED. A ROLLING PATTERN WILL BE ESTABLISHED BY THE CONTRACTOR ON ALL ROADS THAT MEASURE GREATER THAN 1000 FEET ALONG THE CENTERLINE OF THE ROAD. TO ESTABLISH THE ROLLING PATTERN, A DENSITY GAUGE SHOULD BE USED TO DETERMINE THE NUMBER OF ROLLER PASSES THAT CORRELATE WITH THE MAXIMUM DENSITY FOR THAT PARTICULAR ROAD.
  
- 202 ITEM 5, BITUMINOUS CONCRETE UPPER BINDER LAYER, PATCHING, AND ITEM 6, BITUMINOUS CONCRETE UPPER BINDER LAYER, LEVELING, SHALL BE PLACED AT RATES AND LOCATIONS AS DIRECTED BY THE ENGINEER.
  
- 203 TACK COAT WILL BE A SUBSIDIARY OF THE WEARING SURFACE ITEMS AND SHALL BE APPLIED WITH PRACTICES AND AT RATES SPECIFIED IN THE ALDOT STANDARD SPECIFICATIONS FOR HIGHWAY CONSTRUCTION.
  
- 204 ITEM 4, SUPERPAVE BITUMINOUS CONCRETE WEARING LAYER, THIN LIFT MIX, SHALL BE FREE OF RECYCLED ASPHALT MATERIALS.
  
- 205 A MINIMUM 25 FOOT TAPER IN THE WEARING SURFACE THICKNESS WILL BE REQUIRED AT BEGINNING AND END OF THE PROJECT.
  
- 206 INTERSECTING PAVED CITY STREETS WILL BE RESURFACED BACK TO THE RIGHT OF WAY LINE OR THE PROJECT STREET.
  
  
- 300 AN ADEQUATE TRAFFIC CONTROL PLAN WILL BE THE RESPONSIBILITY OF THE CONTRACTOR. A FORMAL WRITTEN TRAFFIC CONTROL PLAN MUST BE DEVELOPED BY THE CONTRACTOR FOR ALL WORK WITHIN THIS CONTRACT AND MUST BE SUBMITTED TO THE CITY ENGINEER AT LEAST ONE WEEK PRIOR TO THE PRE-CONSTRUCTION CONFERENCE FOR REVIEW. TRAFFIC CONTROL MEASURES MAY BE INSPECTED BY THE CITY ENGINEER ON A DAILY BASIS. THE ENGINEER RESERVES THE RIGHT TO CEASE OPERATIONS DURING CONSTRUCTION IN THE EVENT ADEQUATE TRAFFIC CONTROL MEASURES ARE NOT IMPLEMENTED.

- 400 THE CONTRACTOR IS RESPONSIBLE FOR ADJUSTING THE THE ELEVATION OF UTILITY MANHOLES AND UTILITY VALVES DURING PAVING OPERATIONS; HOWEVER; THIS WILL BE LIMITED TO PLACEMENT OF APPROPRIATE RISERS, WHICH WILL BE PROVIDED BY THE CITY. THE CONTRACTOR SHOULD NOTIFY THE CITY ENGINEER IMMEDIATELY SHOULD A MANHOLE OF VALVE REQUIRE ANY ADJUSTMENT NOT COVERED BY THE RISERS
  
- 500 THE QUANTITIES ARE TO BE CONSIDERED AS APPROXIMATE AND MAY BE AMENDED TO INCLUDE ADDITIONAL QUANTITIES OR ADDITIONAL ITEMS, OR TO DECREASE QUANTITIES OR TO EXCLUDE ITEMS OF WORK. THE LIST OF STREETS SHOWN SHOULD BE CONSIDERED PRELIMINARY AND MAY BE AMENDED TO INCLUDE ADDITIONAL STREETS OR TO DECREASE AS DICTATED BY PROJECT FUNDING.

# SUMMARY OF QUANTITIES

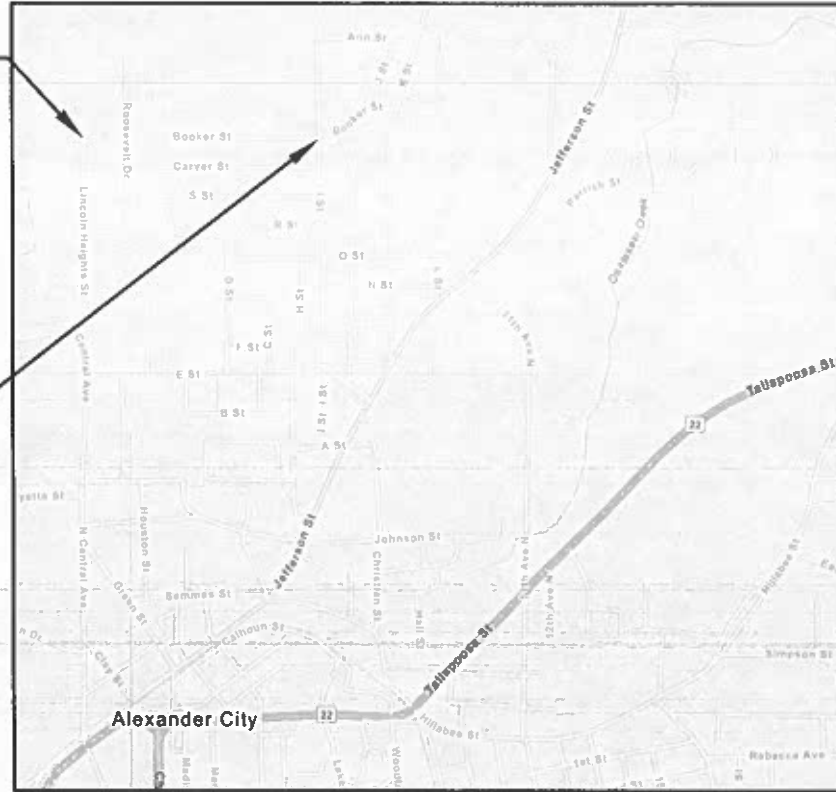
PROJECT REFERENCE	FISCAL YEAR	SHEET NO	LAST SHEET
ACRIP RESURFACING	2024	3	19

ITEM NO.	PLAN QUANTITY	UNIT	DESCRIPTION
1	128,683	SQUARE YARD	BITUMINOUS TREATMENT G
2	38,294	SQUARE YARD	PLANING EXISTING PAVEMENT (APPROXIMATELY 1.10" THRU 2.0" THICK)
3	12,745	TON	SUPERPAVE BITUMINOUS CONCRETE WEARING SURFACE LAYER, 3/8" MAXIMUM AGGREGATE SIZE MIX, ESAL RANGE A/B (APPROXIMATELY 165 LB/SY)
4	2,844	TON	SUPERPAVE BITUMINOUS CONCRETE WEARING LAYER, THIN LIFT MIX, ESAL RANGE A/B (APPROXIMATELY 100 LB/SY)
5	400	TON	SUPERPAVE BITUMINOUS CONCRETE UPPER BINDER LAYER, PATCHING, 1" MAXIMUM AGGREGATE SIZE MIX, ESAL RANGE A/B
6	900	TON	SUPERPAVE BITUMINOUS CONCRETE UPPER BINDER LAYER, LEVELING, 3/8" MAXIMUM AGGREGATE SIZE MIX, ESAL RANGE A/B
7	1	LUMP SUM	MOBILIZATION
8	13.42	MILE	SOLID YELLOW, CLASS 2, TYPE A TRAFFIC STRIPE
9	0	MILE	BROKEN YELLOW, CLASS 2, TYPE A TRAFFIC STRIPE
10	13.42	MILE	SOLID TEMPORARY TRAFFIC STRIPE
11	2764	SQUARE FOOT	TRAFFIC CONTROL MARKINGS, CLASS 2, TYPE A
12	1704	SQUARE FOOT	TEMPORARY TRAFFIC CONTROL MARKINGS
13	1	LUMP SUM	TRAFFIC CONTROL SCHEME

# SITE DETAIL SHEET (1-2)

PROJECT REFERENCE	FISCAL YEAR	SHEET NO	LAST SHEET
ACRIP RESURFACING	2024	4	

**BEGIN PROJECT  
AND WORK  
STA. 0+00**



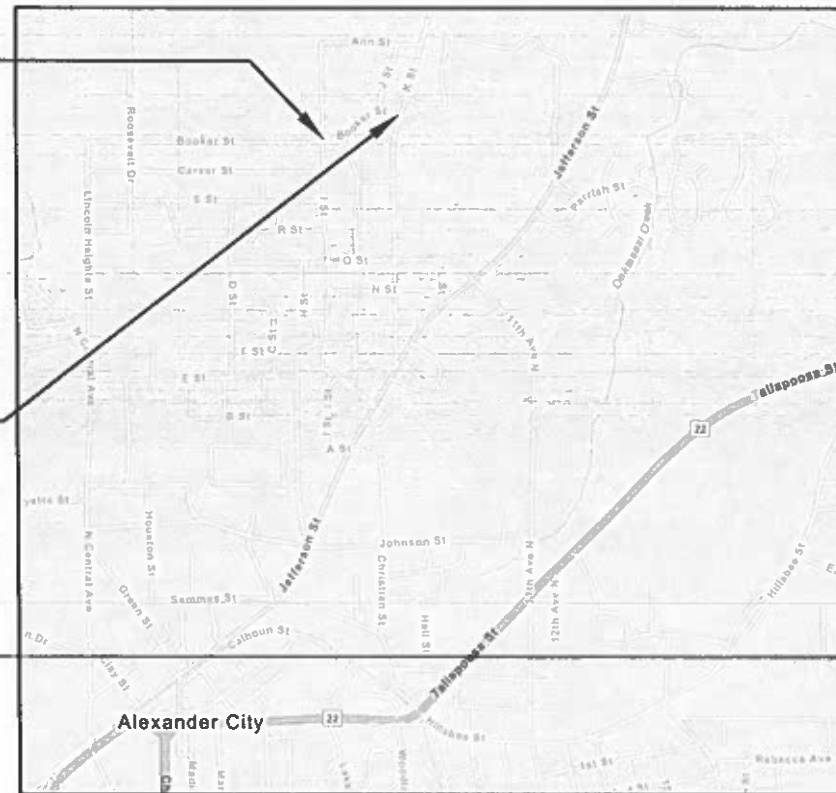
**END PROJECT  
AND WORK  
STA. 26+44**

## SITE 1

### BOOKER ST. (FROM LINCOLN HEIGHTS ST. TO I ST.)

ITEM NO.	PLAN QUANTITY	UNIT	DESCRIPTION
2	7050	SY	PLANING EXISTING PAVEMENT (APPROXIMATELY 1.10" THRU 2.0" THICK)
3	582	TONS	SUPERPAVE BITUMINOUS CONCRETE WEARING SURFACE LAYER (165 LB/SY)
6	45	TONS	SUPERPAVE BITUMINOUS CONCRETE UPPER BINDER LAYER, LEVELING
11	60	SF	TRAFFIC CONTROL MARKINGS, CLASS 2, TYPE A
12	48	SF	TEMPORARY TRAFFIC CONTROL MARKINGS

**BEGIN PROJECT  
AND WORK  
STA. 0+00**



**END PROJECT  
AND WORK  
STA. 9+50**

## SITE 2

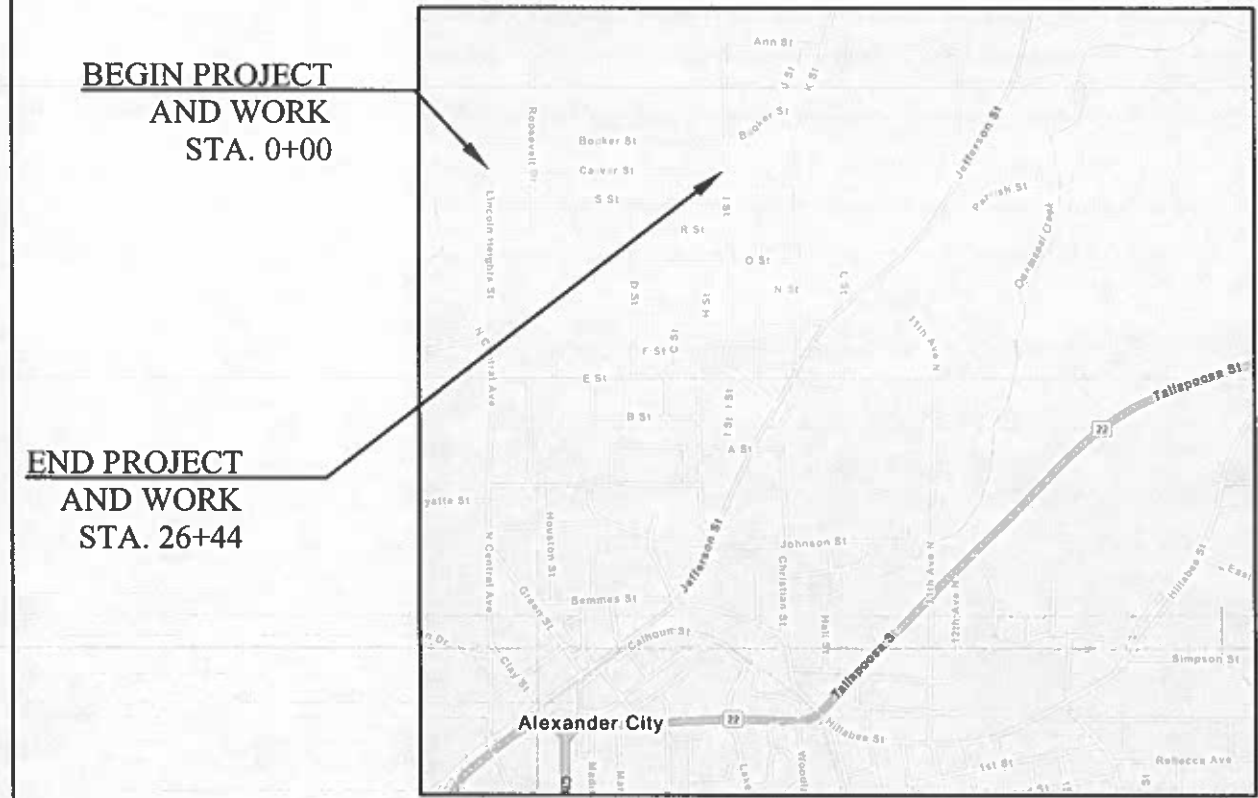
### BOOKER ST. (FROM I ST. TO K. ST)

ITEM NO.	PLAN QUANTITY	UNIT	DESCRIPTION
2	2639	SY	PLANING EXISTING PAVEMENT (APPROXIMATELY 1.10" THRU 2.0" THICK)
3	218	TONS	SUPERPAVE BITUMINOUS CONCRETE WEARING SURFACE LAYER (165 LB/SY)
6	10	TONS	SUPERPAVE BITUMINOUS CONCRETE UPPER BINDER LAYER, LEVELING
11	60	SF	TRAFFIC CONTROL MARKINGS, CLASS 2, TYPE A
12	48	SF	TEMPORARY TRAFFIC CONTROL MARKINGS

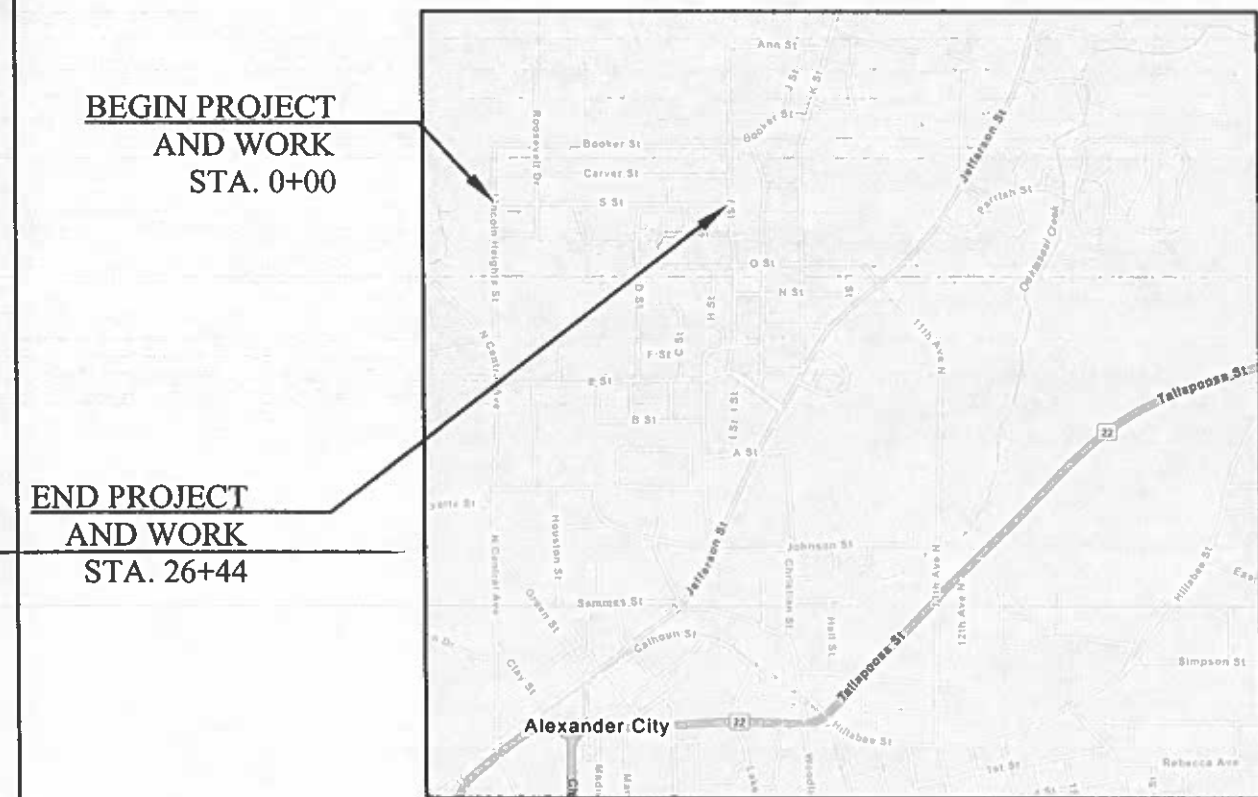


# SITE DETAIL SHEET (3-4)

PROJECT REFERENCE	FISCAL YEAR	SHEET NO	LAST SHEET
ACRIP RESURFACING	2024	5	



SITE 3			
CARVER ST. (FROM LINCOLN HEIGHTS ST. TO I ST.)			
ITEM NO.	PLAN QUANTITY	UNIT	DESCRIPTION
3	436	TONS	SUPERPAVE BITUMINOUS CONCRETE WEARING SURFACE LAYER (165 LB/SY)
6	20	TONS	SUPERPAVE BITUMINOUS CONCRETE UPPER BINDER LAYER, LEVELING
11	60	SF	TRAFFIC CONTROL MARKINGS, CLASS 2, TYPE A
12	48	SF	TEMPORARY TRAFFIC CONTROL MARKINGS



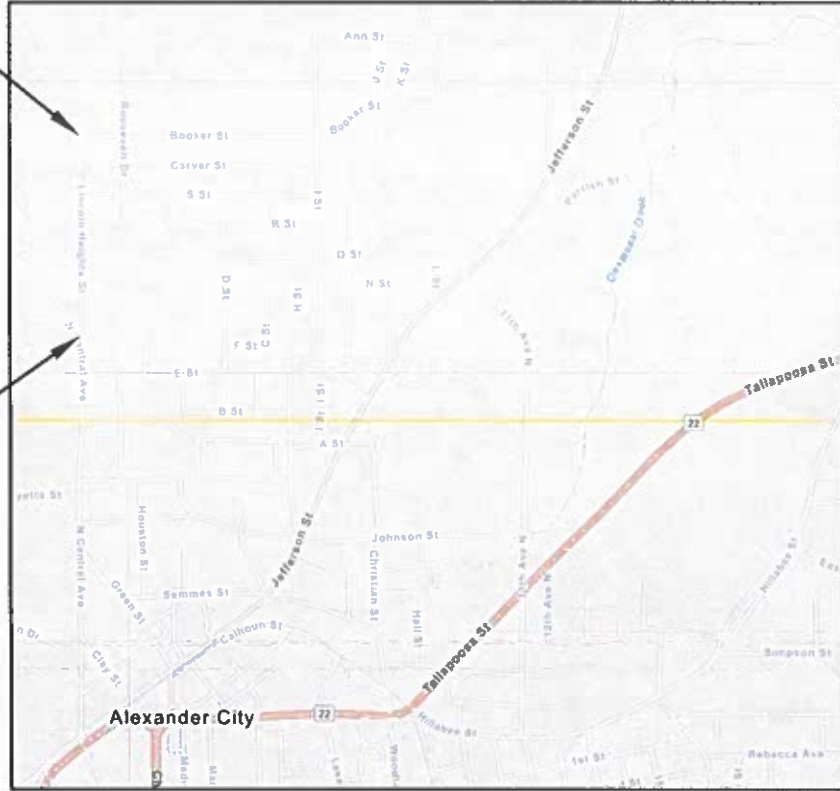
SITE 4			
S ST. (FROM LINCOLN HEIGHTS ST. TO I ST.)			
ITEM NO.	PLAN QUANTITY	UNIT	DESCRIPTION
3	533	TONS	SUPERPAVE BITUMINOUS CONCRETE WEARING SURFACE LAYER (165 LB/SY)
6	50	TONS	SUPERPAVE BITUMINOUS CONCRETE UPPER BINDER LAYER, LEVELING
11	60	SF	TRAFFIC CONTROL MARKINGS, CLASS 2, TYPE A
12	48	SF	TEMPORARY TRAFFIC CONTROL MARKINGS

# SITE DETAIL SHEET (5-6)

PROJECT REFERENCE	FISCAL YEAR	SHEET NO	LAST SHEET
ACRIP RESURFACING	2024	6	

END PROJECT  
AND WORK  
STA. 24+09

BEGIN PROJECT  
AND WORK  
STA. 0+00



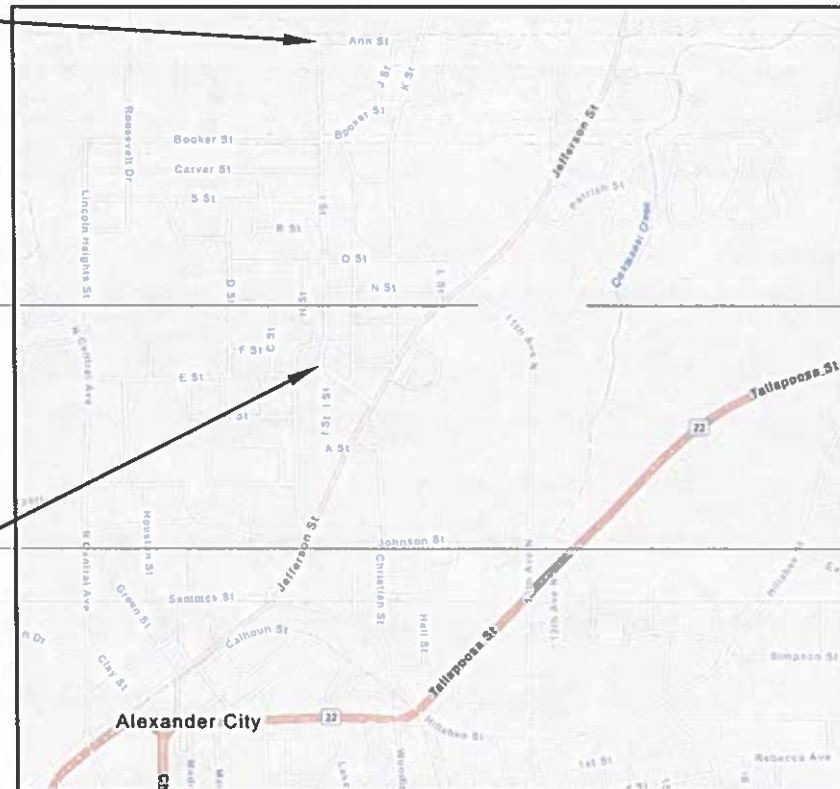
## SITE 5

LINCOLN HEIGHTS ST. (FROM N. CENTRAL AVE. TO BOOKER ST.)

ITEM NO.	PLAN QUANTITY	UNIT	DESCRIPTION
2	5353	SY	PLANING EXISTING PAVEMENT (APPROXIMATELY 1.10" THRU 2.0" THICK)
3	442	TONS	SUPERPAVE BITUMINOUS CONCRETE WEARING SURFACE LAYER (165 LB/SY)
6	35	TONS	SUPERPAVE BITUMINOUS CONCRETE UPPER BINDER LAYER, LEVELING
11	30	SF	TRAFFIC CONTROL MARKINGS, CLASS 2, TYPE A
12	24	SF	TEMPORARY TRAFFIC CONTROL MARKINGS

END PROJECT  
AND WORK  
STA. 36+40

BEGIN PROJECT  
AND WORK  
STA. 0+00



## SITE 6

I ST. (FROM MARTIN LUTHER KING JR. BLVD. TO ANN ST.)

ITEM NO.	PLAN QUANTITY	UNIT	DESCRIPTION
1	8898	SY	BITUMINOUS TREATMENT G
3	734	TONS	SUPERPAVE BITUMINOUS CONCRETE WEARING SURFACE LAYER (165 LB/SY)
6	60	TONS	SUPERPAVE BITUMINOUS CONCRETE UPPER BINDER LAYER, LEVELING
11	296	SF	TRAFFIC CONTROL MARKINGS, CLASS 2, TYPE A
12	72	SF	TEMPORARY TRAFFIC CONTROL MARKINGS

3 STOP BARS AND A CROSS WALK AT ALFRED COOPER

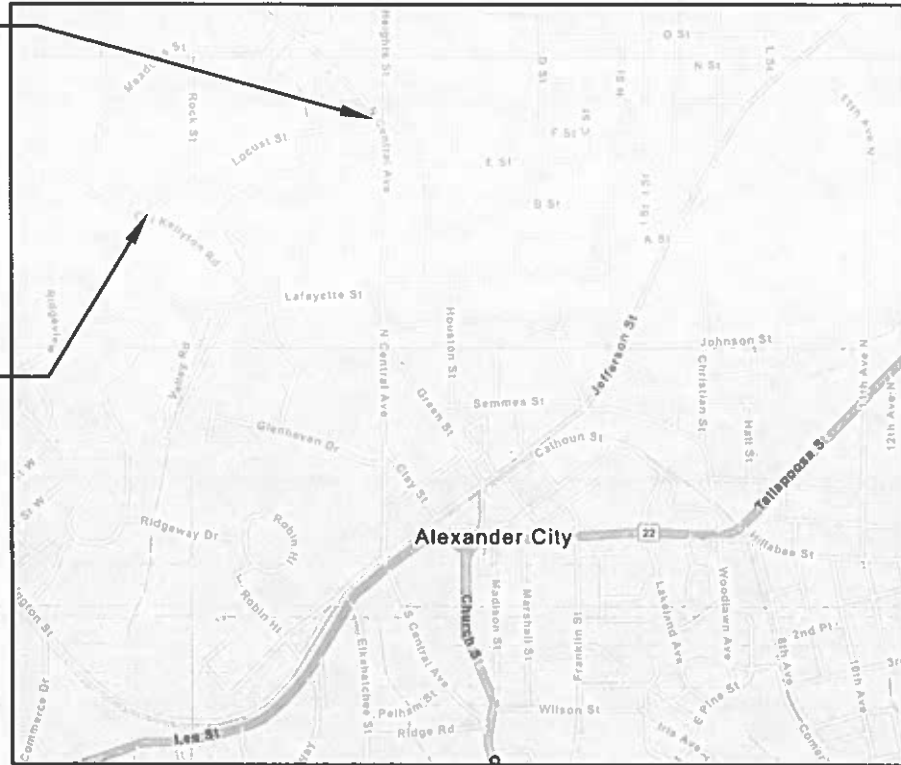
SHEET TITLE
SITE DETAIL 5-6

# SITE DETAIL SHEET (7-8)

PROJECT REFERENCE	FISCAL YEAR	SHEET NO	LAST SHEET
ACRIP RESURFACING	2024	7	

**END PROJECT  
AND WORK  
STA. 26+60**

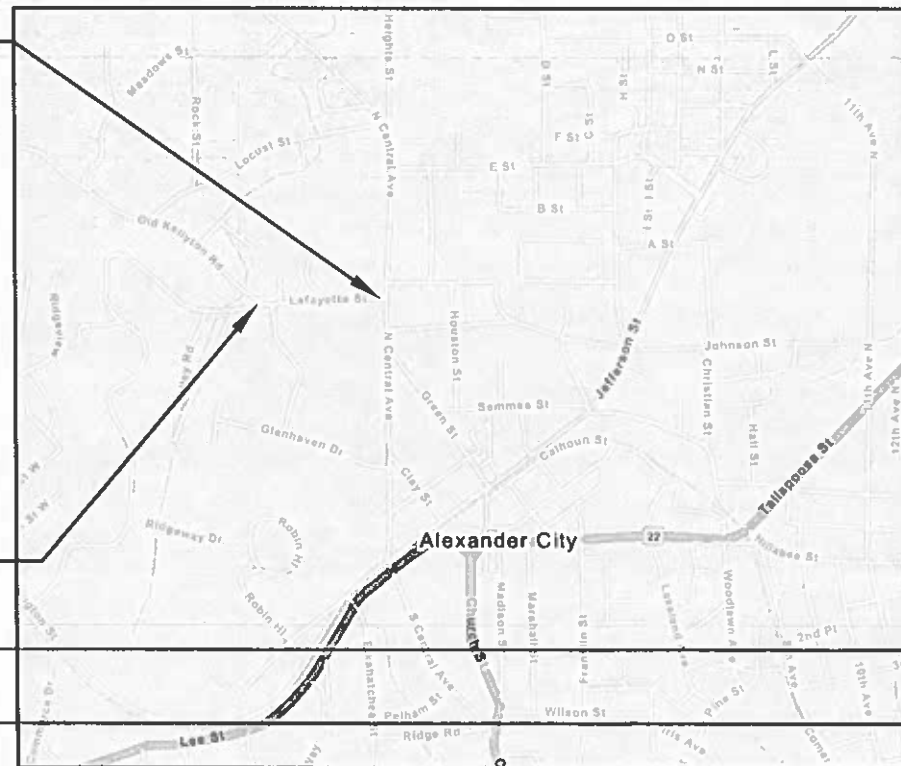
**BEGIN PROJECT  
AND WORK  
STA. 0+00**



SITE 7			
LOCUST ST. (FROM OLD KELLYTON RD. TO N. CENTRAL AVE.)			
ITEM NO.	PLAN QUANTITY	UNIT	DESCRIPTION
2	6502	SY	PLANING EXISTING PAVEMENT (APPROXIMATELY 1.10" THRU 2.0" THICK)
3	536	TONS	SUPERPAVE BITUMINOUS CONCRETE WEARING SURFACE LAYER (165 LB/SY)
11	60	SF	TRAFFIC CONTROL MARKINGS, CLASS 2, TYPE A
12	48	SF	TEMPORARY TRAFFIC CONTROL MARKINGS

**END PROJECT  
AND WORK  
STA. 12+04**

**BEGIN PROJECT  
AND WORK  
STA. 0+00**



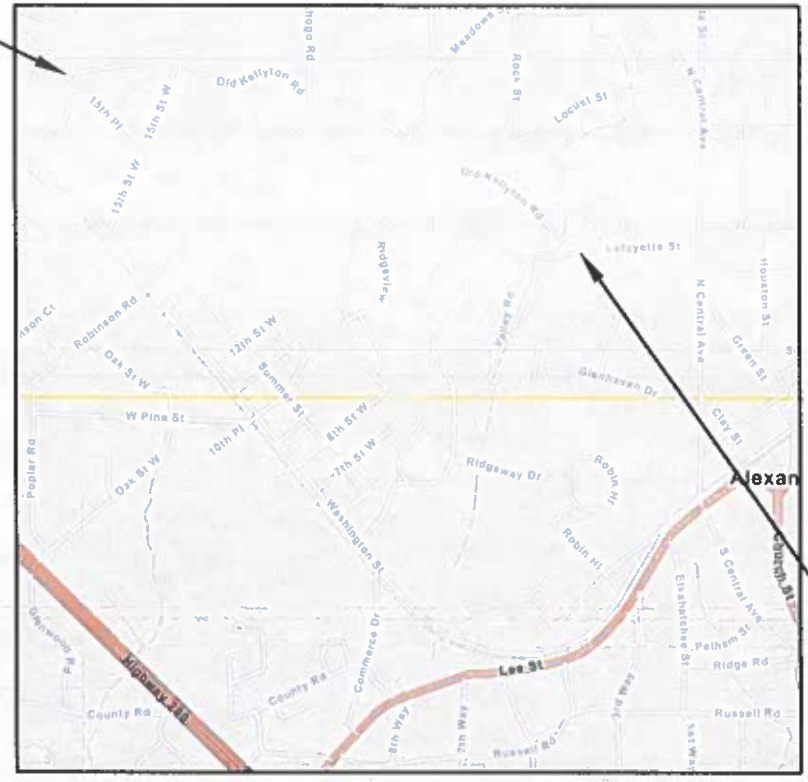
SITE 8			
LAFAYETTE ST. (FROM OLD KELLYTON RD TO N. CENTRAL AVE.)			
ITEM NO.	PLAN QUANTITY	UNIT	DESCRIPTION
3	147	TONS	SUPERPAVE BITUMINOUS CONCRETE WEARING SURFACE LAYER (165 LB/SY)
6	60	TONS	SUPERPAVE BITUMINOUS CONCRETE UPPER BINDER LAYER, LEVELING
11	60	SF	TRAFFIC CONTROL MARKINGS, CLASS 2, TYPE A
12	48	SF	TEMPORARY TRAFFIC CONTROL MARKINGS



# SITE DETAIL SHEET (9-10)

PROJECT REFERENCE	FISCAL YEAR	SHEET NO	LAST SHEET
ACRIP RESURFACING	2024	8	

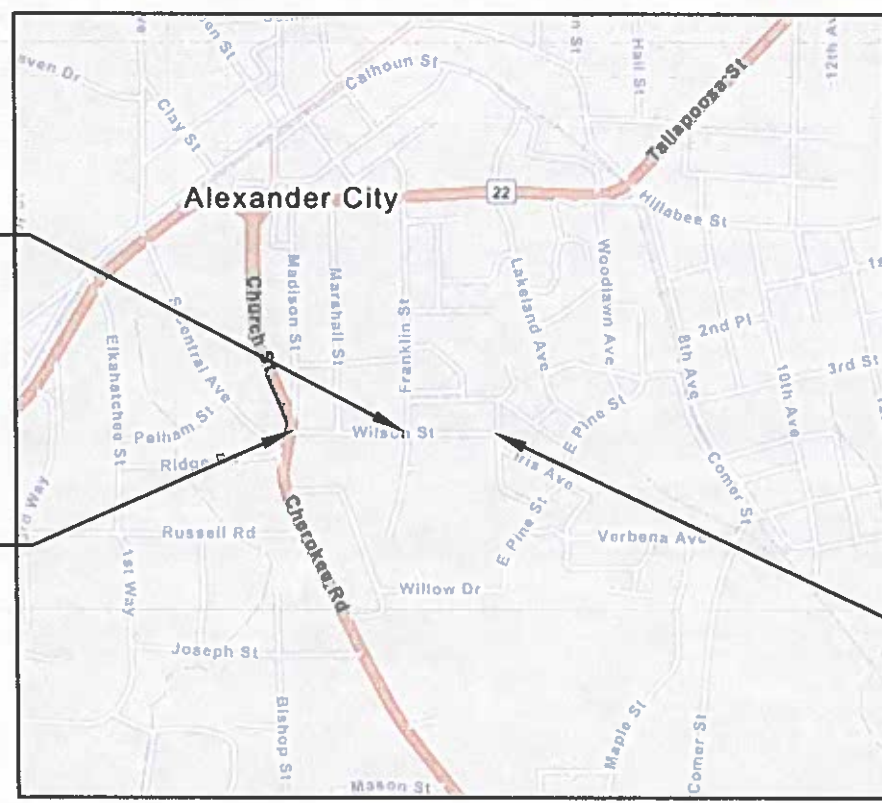
**BEGIN PROJECT  
AND WORK  
STA. 0+00**



SITE 9			
OLD KELLYTON RD. (FROM 15TH PL. TO RIDGEWAY DR.)			
ITEM NO.	PLAN QUANTITY	UNIT	DESCRIPTION
1	15495	SY	BITUMINOUS TREATMENT G
3	775	TONS	SUPERPAVE BITUMINOUS CONCRETE WEARING SURFACE LAYER (165 LB/SY)
6	80	TONS	SUPERPAVE BITUMINOUS CONCRETE UPPER BINDER LAYER, LEVELING
11	180	SF	TRAFFIC CONTROL MARKINGS, CLASS 2, TYPE A
12	144	SF	TEMPORARY TRAFFIC CONTROL MARKINGS

**END PROJECT  
AND WORK  
STA. 63+39**

**END PLANING  
STA. 8+52**



SITE 10			
WILSON ST. (FROM MADISON ST. TO ROSE AVE.)			
ITEM NO.	PLAN QUANTITY	UNIT	DESCRIPTION
2	2461	SY	PLANING EXISTING PAVEMENT (APPROXIMATELY 1.10" THRU 2.0" THICK)
3	359	TONS	SUPERPAVE BITUMINOUS CONCRETE WEARING SURFACE LAYER (165 LB/SY)
6	20	TONS	SUPERPAVE BITUMINOUS CONCRETE UPPER BINDER LAYER, LEVELING
11	452	SF	TRAFFIC CONTROL MARKINGS, CLASS 2, TYPE A
12	144	SF	TEMPORARY TRAFFIC CONTROL MARKINGS

**END PROJECT  
AND WORK  
STA. 12+04**

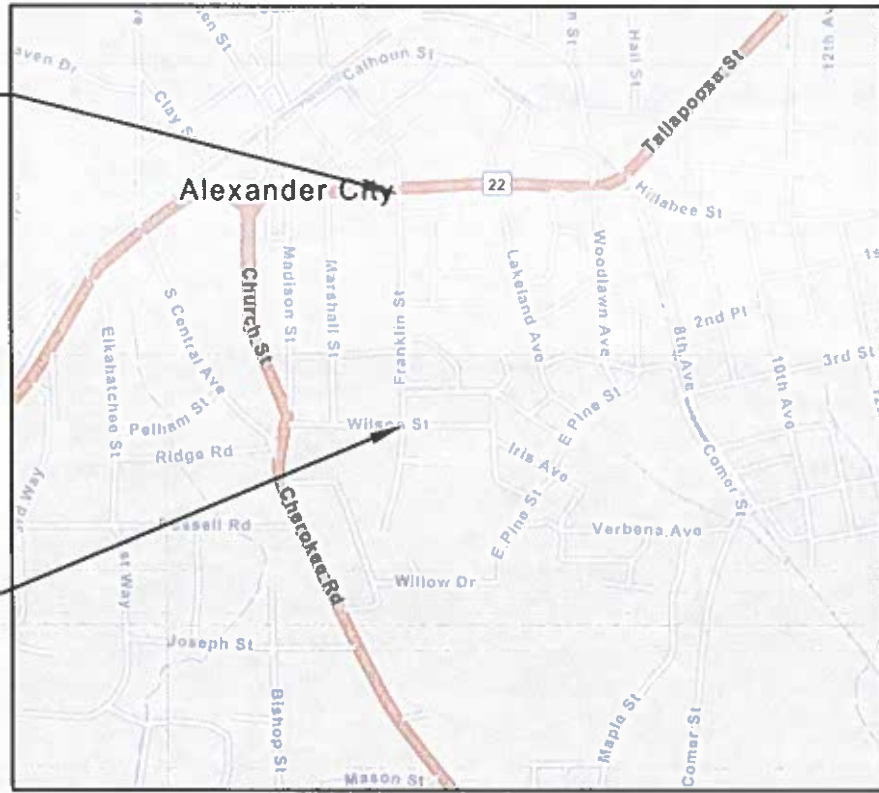
6 STOP BARS 2 CROSS WALKS  
\*PLANING FROM MADISON TO FRANKLIN



# SITE DETAIL SHEET (11-12)

PROJECT REFERENCE	FISCAL YEAR	SHEET NO	LAST SHEET
ACRIP RESURFACING	2024	9	

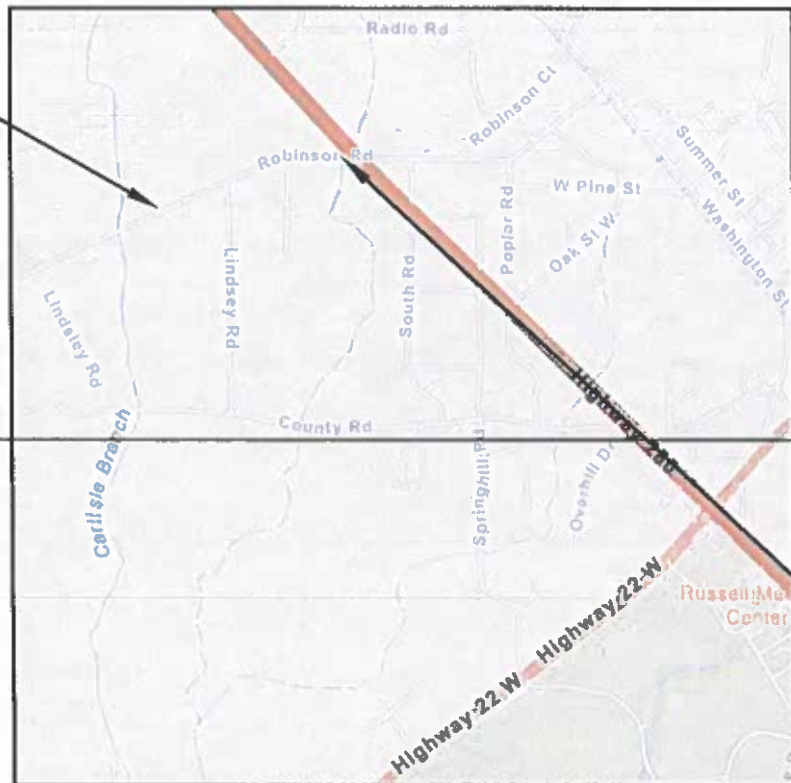
END PROJECT  
AND WORK  
STA. 63+39



BEGIN PROJECT  
AND WORK  
STA. 0+00

SITE 11			
FRANKLIN ST. (FROM WILSON ST. TO SR 22)			
ITEM NO.	PLAN QUANTITY	UNIT	DESCRIPTION
4	263	TONS	SUPERPAVE BITUMINOUS CONCRETE WEARING LAYER, THIN LIFT MIX
6	20	TONS	SUPERPAVE BITUMINOUS CONCRETE UPPER BINDER LAYER, LEVELING
11	60	SF	TRAFFIC CONTROL MARKINGS, CLASS 2, TYPE A
12	48	SF	TEMPORARY TRAFFIC CONTROL MARKINGS

BEGIN PROJECT  
AND WORK  
STA. 0+00



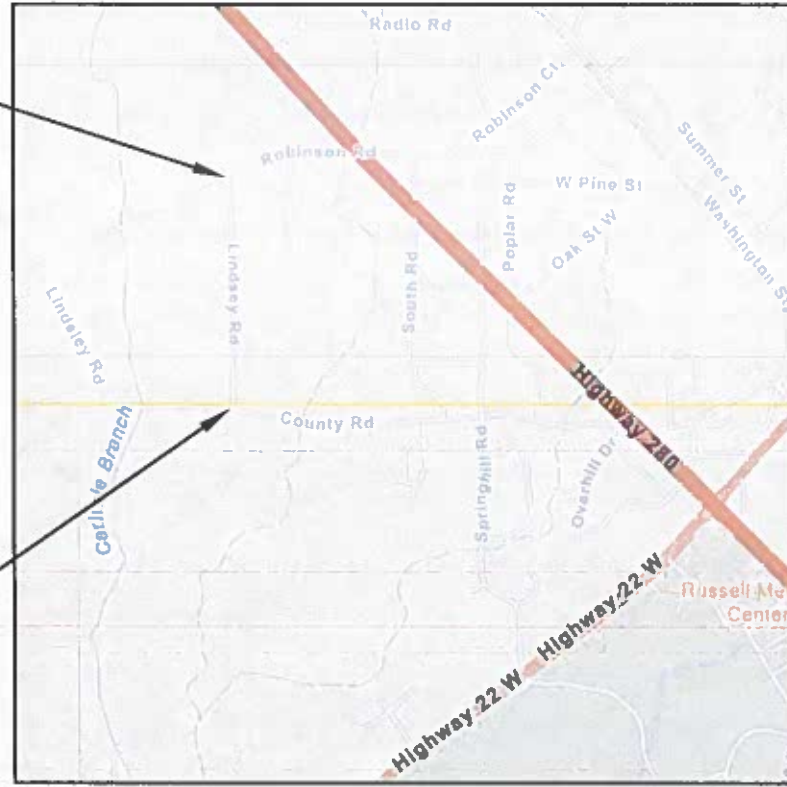
END PROJECT  
AND WORK  
STA. 26+93

SITE 12			
ROBINSON RD. (FROM THE ALEXANDER CITY LIMITS TO US 280)			
ITEM NO.	PLAN QUANTITY	UNIT	DESCRIPTION
1	5984	SY	BITUMINOUS TREATMENT G
3	494	TONS	SUPERPAVE BITUMINOUS CONCRETE WEARING SURFACE LAYER (165 LB/SY)
6	40	TONS	SUPERPAVE BITUMINOUS CONCRETE UPPER BINDER LAYER, LEVELING
11	24	SF	TRAFFIC CONTROL MARKINGS, CLASS 2, TYPE A
12	34	SF	TEMPORARY TRAFFIC CONTROL MARKINGS

# SITE DETAIL SHEET (13-14)

PROJECT REFERENCE	FISCAL YEAR	SHEET NO	LAST SHEET
ACRIP RESURFACING	2024	10	

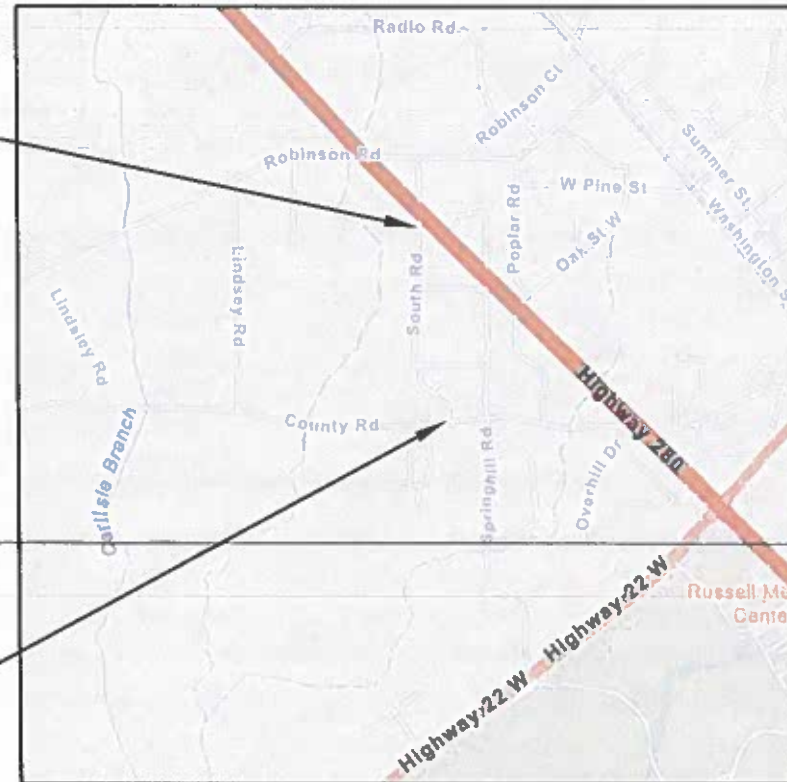
END PROJECT  
AND WORK  
STA. 31+00



BEGIN PROJECT  
AND WORK  
STA. 0+00

SITE 13			
LINDSEY RD. (FROM COUNTY RD. TO ROBINSON RD.)			
ITEM NO.	PLAN QUANTITY	UNIT	DESCRIPTION
1	6889	SY	BITUMINOUS TREATMENT G
3	568	TONS	SUPERPAVE BITUMINOUS CONCRETE WEARING SURFACE LAYER (165 LB/SY)
6	20	TONS	SUPERPAVE BITUMINOUS CONCRETE UPPER BINDER LAYER, LEVELING
11	36	SF	TRAFFIC CONTROL MARKINGS, CLASS 2, TYPE A
12	24	SF	TEMPORARY TRAFFIC CONTROL MARKINGS

END PROJECT  
AND WORK  
STA. 28+96



BEGIN PROJECT  
AND WORK  
STA. 0+00

SITE 14			
SOUTH ROAD (FROM COUNTY ROAD TO US 280)			
ITEM NO.	PLAN QUANTITY	UNIT	DESCRIPTION
2	7079	SY	PLANING EXISTING PAVEMENT (APPROXIMATELY 1.10" THRU 2.0" THICK)
3	584	TONS	SUPERPAVE BITUMINOUS CONCRETE WEARING SURFACE LAYER (165 LB/SY)
6	40	TONS	SUPERPAVE BITUMINOUS CONCRETE UPPER BINDER LAYER, LEVELING
11	68	SF	TRAFFIC CONTROL MARKINGS, CLASS 2, TYPE A
12	48	SF	TEMPORARY TRAFFIC CONTROL MARKINGS

SHEET TITLE
SITE DETAIL 13-14



# SITE DETAIL SHEET (15-16)

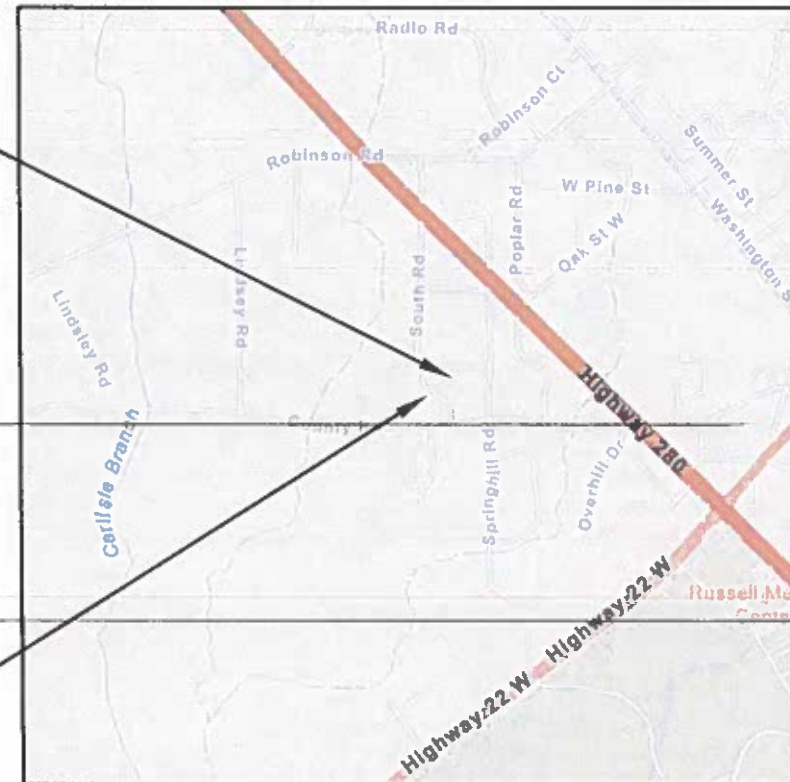
PROJECT REFERENCE	FISCAL YEAR	SHEET NO	LAST SHEET
ACRIP RESURFACING	2024	11	



BEGIN PROJECT  
AND WORK  
STA. 0+00

SITE 15			
DAYWELL ST. (FROM SOUTH RD. TO SPRINGHILL ST.)			
ITEM NO.	PLAN QUANTITY	UNIT	DESCRIPTION
2	2272	SY	PLANING EXISTING PAVEMENT (APPROXIMATELY 1.10" THRU 2.0" THICK)
3	187	TONS	SUPERPAVE BITUMINOUS CONCRETE WEARING SURFACE LAYER (165 LB/SY)
6	20	TONS	SUPERPAVE BITUMINOUS CONCRETE UPPER BINDER LAYER, LEVELING
11	36	SF	TRAFFIC CONTROL MARKINGS, CLASS 2, TYPE A
12	24	SF	TEMPORARY TRAFFIC CONTROL MARKINGS

END PROJECT  
AND WORK  
STA. 8+89



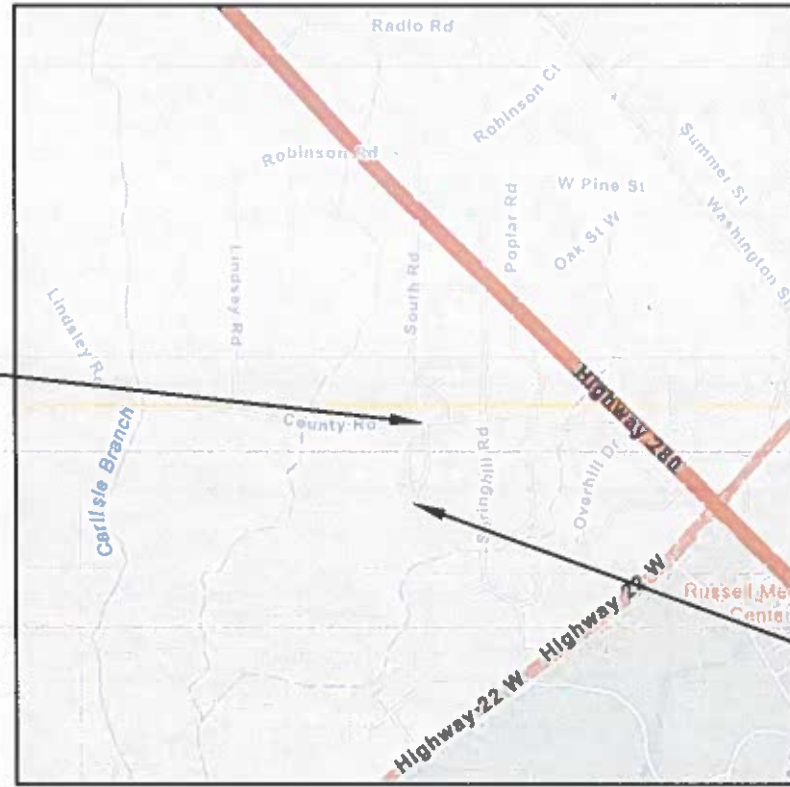
END PROJECT  
AND WORK  
STA. 2+90

SITE 16			
SOUTH ROAD CT. (FROM SOUTH RD. TO CUL-DE-SAC)			
ITEM NO.	PLAN QUANTITY	UNIT	DESCRIPTION
2	1022	SY	PLANING EXISTING PAVEMENT (APPROXIMATELY 1.10" THRU 2.0" THICK)
3	84	TONS	SUPERPAVE BITUMINOUS CONCRETE WEARING SURFACE LAYER (165 LB/SY)

BEGIN PROJECT  
AND WORK  
STA. 0+00

# SITE DETAIL SHEET (17-18)

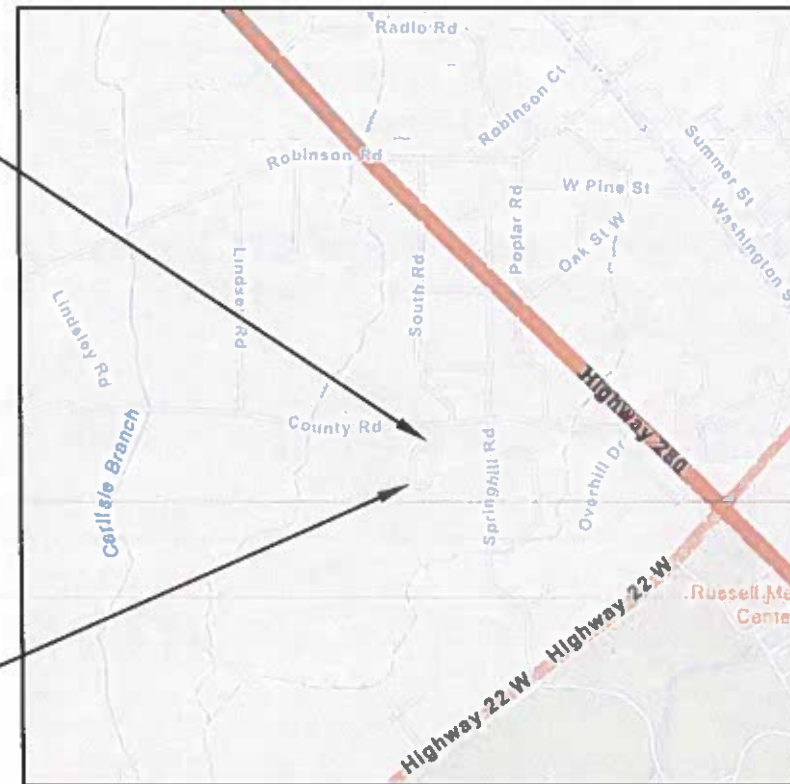
PROJECT REFERENCE	FISCAL YEAR	SHEET NO	LAST SHEET
ACRIP RESURFACING	2024	12	



BEGIN PROJECT  
AND WORK  
STA. 0+00

END PROJECT  
AND WORK  
STA. 8+74

SITE 17			
THOMAS ST. (FROM COUNTY RD. TO DEAD END)			
ITEM NO.	PLAN QUANTITY	UNIT	DESCRIPTION
2	2136	SY	PLANING EXISTING PAVEMENT (APPROXIMATELY 1.10" THRU 2.0" THICK)
3	176	TONS	SUPERPAVE BITUMINOUS CONCRETE WEARING SURFACE LAYER (165 LB/SY)
6	0	TONS	SUPERPAVE BITUMINOUS CONCRETE UPPER BINDER LAYER, LEVELING
11	36	SF	TRAFFIC CONTROL MARKINGS, CLASS 2, TYPE A
12	24	SF	TEMPORARY TRAFFIC CONTROL MARKINGS



END PROJECT  
AND WORK  
STA. 2+90

BEGIN PROJECT  
AND WORK  
STA. 0+00

SITE 18			
CELIA CIR (FROM SMITH ST. TO THOMAS ST.)			
ITEM NO.	PLAN QUANTITY	UNIT	DESCRIPTION
2	1753	SY	PLANING EXISTING PAVEMENT (APPROXIMATELY 1.10" THRU 2.0" THICK)
3	145	TONS	SUPERPAVE BITUMINOUS CONCRETE WEARING SURFACE LAYER (165 LB/SY)
6	0	TONS	SUPERPAVE BITUMINOUS CONCRETE UPPER BINDER LAYER, LEVELING
11	72	SF	TRAFFIC CONTROL MARKINGS, CLASS 2, TYPE A
12	48	SF	TEMPORARY TRAFFIC CONTROL MARKINGS



# SITE DETAIL SHEET (19-20)

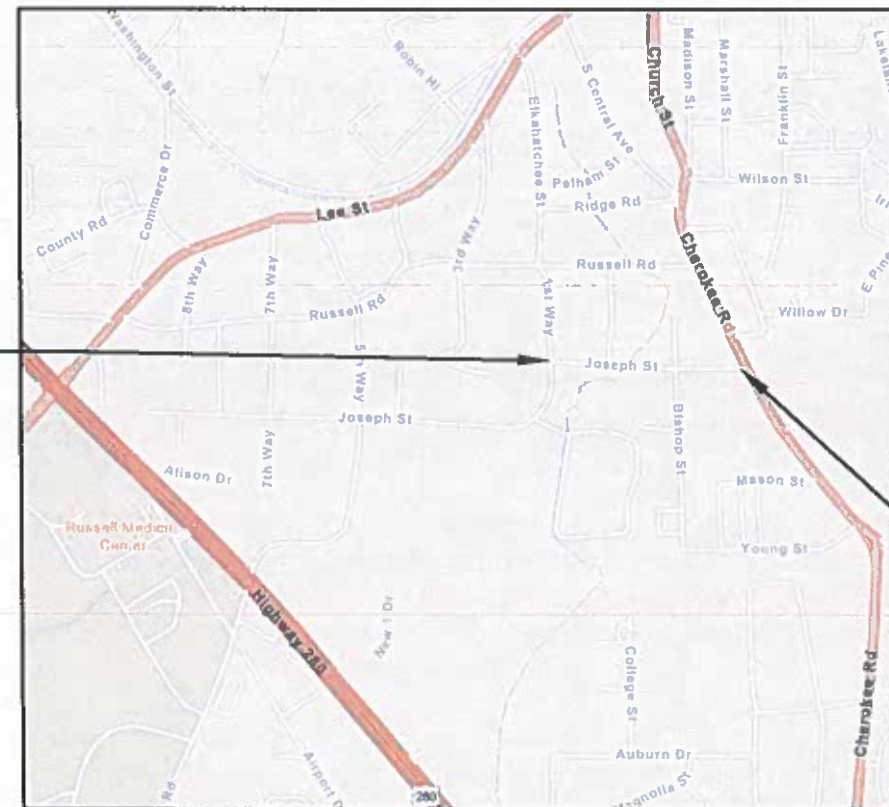
PROJECT REFERENCE	FISCAL YEAR	SHEET NO	LAST SHEET
ACRIP RESURFACING	2024	13	



SITE 19			
RUSSELL RD. (FROM LEE ST. TO CHEROKEE RD.)			
ITEM NO.	PLAN QUANTITY	UNIT	DESCRIPTION
1	12848	SY	BITUMINOUS TREATMENT G
4	642	TONS	SUPERPAVE BITUMINOUS CONCRETE WEARING LAYER, THIN LIFT MIX
6	180	TONS	SUPERPAVE BITUMINOUS CONCRETE UPPER BINDER LAYER, LEVELING
8	1.98	MILE	SOLID YELLOW, CLASS 2, TYPE A TRAFFIC STRIPE
10	1.98	MILE	SOLID TEMPORARY TRAFFIC STRIPE
11	180	SF	TRAFFIC CONTROL MARKINGS, CLASS 2, TYPE A
12	144	SF	TEMPORARY TRAFFIC CONTROL MARKINGS

END PROJECT AND WORK STA. 52+56

6 STOP BARS



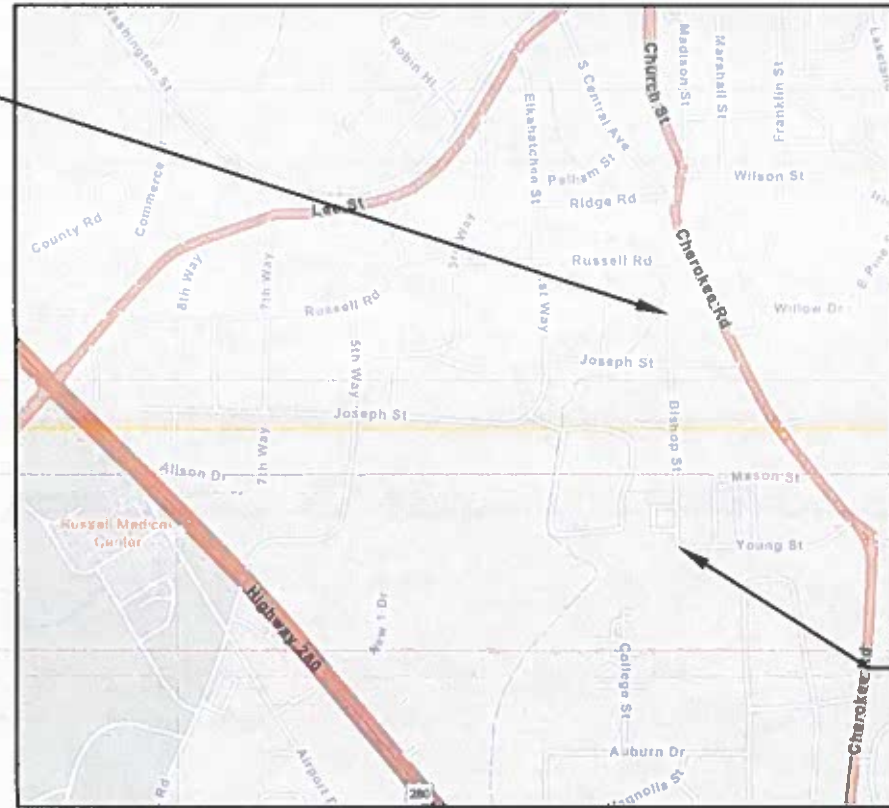
SITE 20			
JOSEPH ST. (FROM ELKAHATCHEE ST. TO CHEROKEE RD.)			
ITEM NO.	PLAN QUANTITY	UNIT	DESCRIPTION
1	4619	SY	BITUMINOUS TREATMENT G
3	381	TONS	SUPERPAVE BITUMINOUS CONCRETE WEARING SURFACE LAYER (165 LB/SY)
6	80	TONS	SUPERPAVE BITUMINOUS CONCRETE UPPER BINDER LAYER, LEVELING
8	0.65	MILE	SOLID YELLOW, CLASS 2, TYPE A TRAFFIC STRIPE
10	0.65	MILE	SOLID TEMPORARY TRAFFIC STRIPE
11	72	SF	TRAFFIC CONTROL MARKINGS, CLASS 2, TYPE A
12	48	SF	TEMPORARY TRAFFIC CONTROL MARKINGS

END PROJECT AND WORK STA. 17+32

# SITE DETAIL SHEET (21-22)

PROJECT REFERENCE	FISCAL YEAR	SHEET NO	LAST SHEET
ACRIP RESURFACING	2024	14	

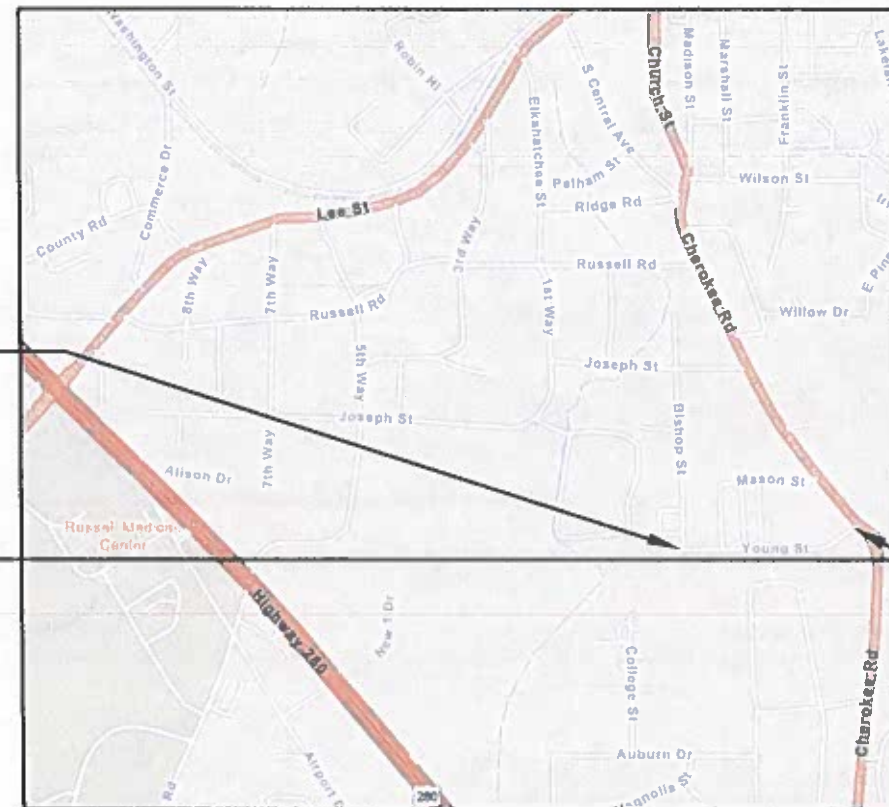
**END PROJECT  
AND WORK  
STA. 18+95**



**BEGIN PROJECT  
AND WORK  
STA. 0+00**

SITE 21			
BISHOP ST. (FROM YOUNG ST. TO DEAD END)			
ITEM NO.	PLAN QUANTITY	UNIT	DESCRIPTION
3	417	TONS	SUPERPAVE BITUMINOUS CONCRETE WEARING SURFACE LAYER (165 LB/SY)
6	0	TONS	SUPERPAVE BITUMINOUS CONCRETE UPPER BINDER LAYER, LEVELING
11	72	SF	TRAFFIC CONTROL MARKINGS, CLASS 2, TYPE A
12	48	SF	TEMPORARY TRAFFIC CONTROL MARKINGS

**BEGIN PROJECT  
AND WORK  
STA. 0+00**



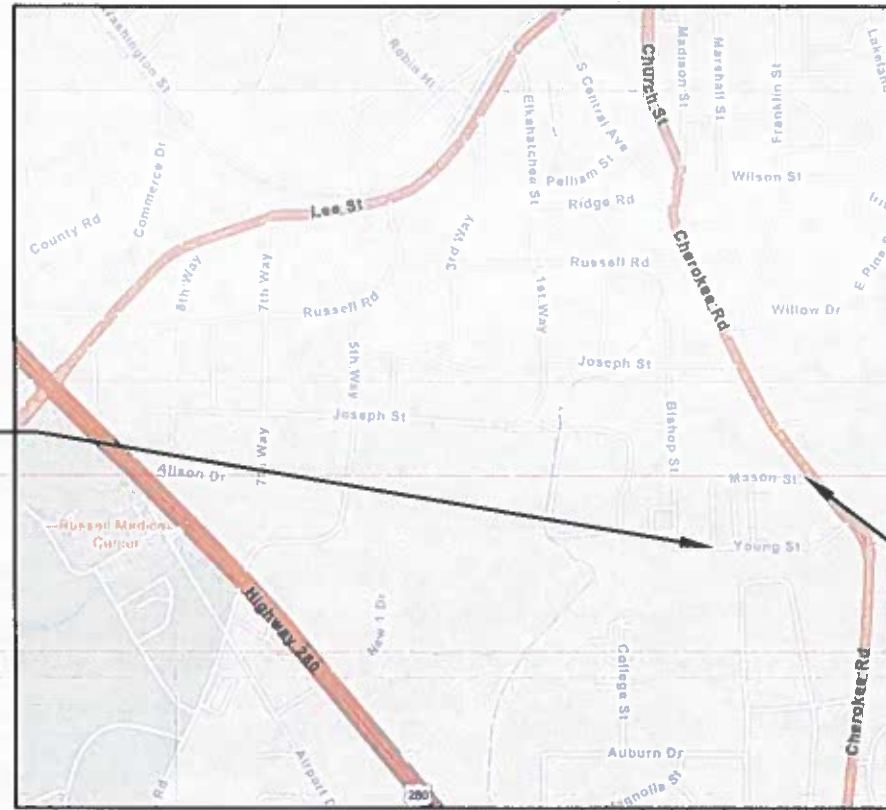
**END PROJECT  
AND WORK  
STA. 16+14**

SITE 22			
YOUNG ST. (FROM BISHOP ST. TO CHEROKEE RD.)			
ITEM NO.	PLAN QUANTITY	UNIT	DESCRIPTION
3	414	TONS	SUPERPAVE BITUMINOUS CONCRETE WEARING SURFACE LAYER (165 LB/SY)
6	0	TONS	SUPERPAVE BITUMINOUS CONCRETE UPPER BINDER LAYER, LEVELING
11	36	SF	TRAFFIC CONTROL MARKINGS, CLASS 2, TYPE A
12	24	SF	TEMPORARY TRAFFIC CONTROL MARKINGS



# SITE DETAIL SHEET (23-24)

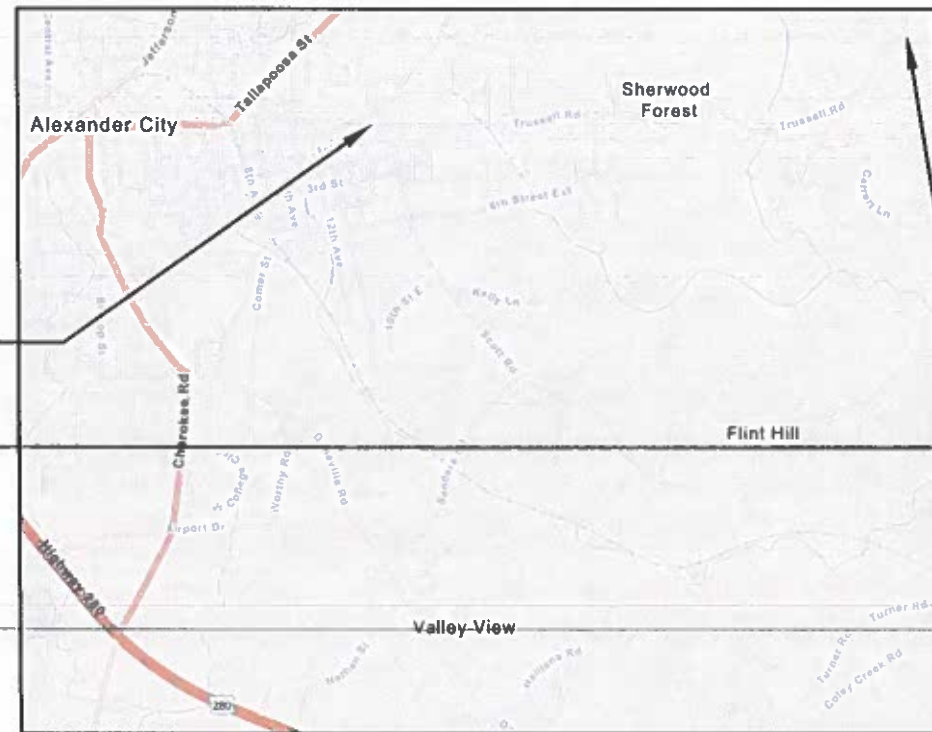
PROJECT REFERENCE	FISCAL YEAR	SHEET NO	LAST SHEET
ACRIP RESURFACING	2024	15	



**BEGIN PROJECT  
AND WORK  
STA. 0+00**

**END PROJECT  
AND WORK  
STA. 14+84**

SITE 23			
MASON ST./MYRTLE ST (FROM YOUNG ST. TO CHEROKEE RD.)			
ITEM NO.	PLAN QUANTITY	UNIT	DESCRIPTION
1	4287	SY	BITUMINOUS TREATMENT G
3	354	TONS	SUPERPAVE BITUMINOUS CONCRETE WEARING SURFACE LAYER (165 LB/SY)
6	0	TONS	SUPERPAVE BITUMINOUS CONCRETE UPPER BINDER LAYER, LEVELING
11	72	SF	TRAFFIC CONTROL MARKINGS, CLASS 2, TYPE A
12	48	SF	TEMPORARY TRAFFIC CONTROL MARKINGS



**BEGIN PROJECT  
AND WORK  
STA. 0+00**

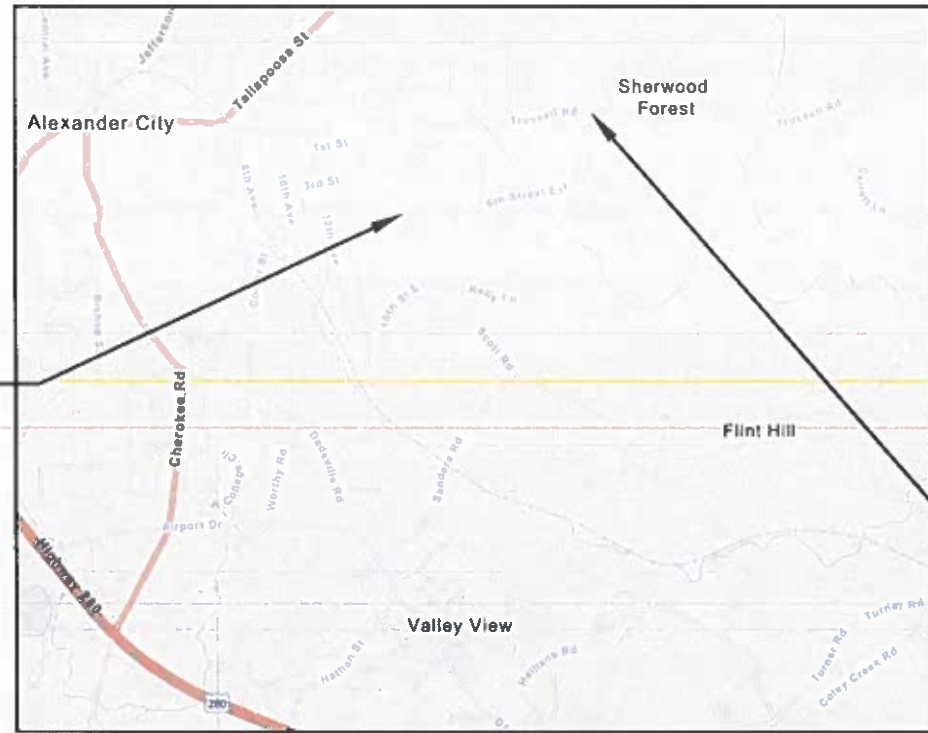
**END PROJECT  
AND WORK  
STA. 120+38**

**9 STOP BARS**

SITE 24			
TRUSSELL RD. (FROM SCOTT RD. TO COLEY CREEK RD.)			
ITEM NO.	PLAN QUANTITY	UNIT	DESCRIPTION
1	29426	SY	BITUMINOUS TREATMENT G
4	1471	TONS	SUPERPAVE BITUMINOUS CONCRETE WEARING LAYER, THIN LIFT MIX
6	80	TONS	SUPERPAVE BITUMINOUS CONCRETE UPPER BINDER LAYER, LEVELING
8	4.56	MILE	SOLID YELLOW, CLASS 2, TYPE A TRAFFIC STRIPE
10	4.56	MILE	SOLID TEMPORARY TRAFFIC STRIPE
11	324	SF	TRAFFIC CONTROL MARKINGS, CLASS 2, TYPE A
12	216	SF	TEMPORARY TRAFFIC CONTROL MARKINGS

# SITE DETAIL SHEET (25-26)

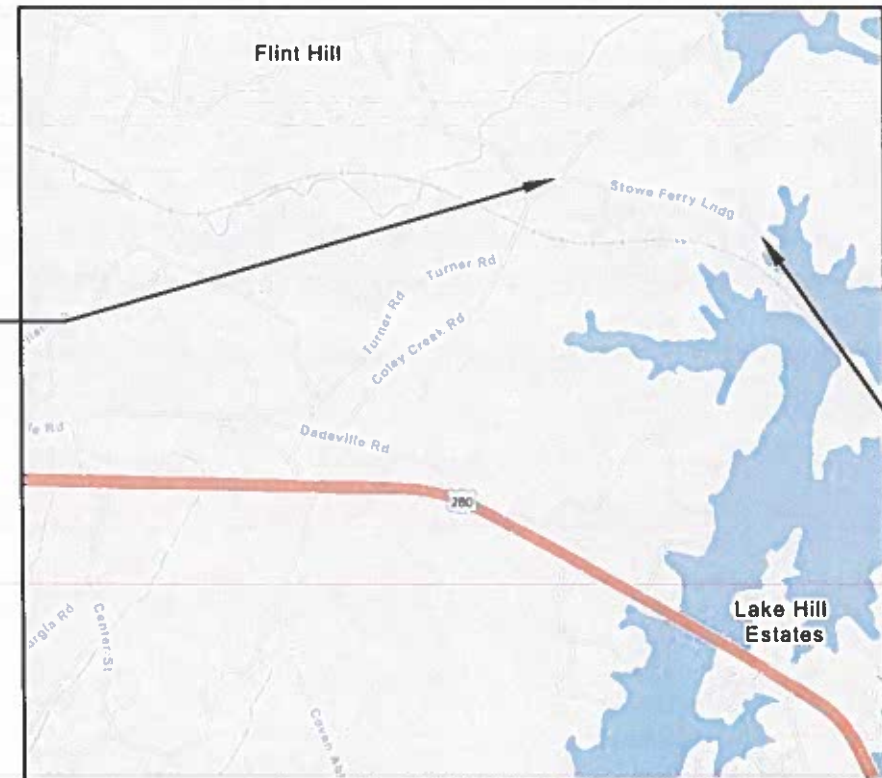
PROJECT REFERENCE	FISCAL YEAR	SHEET NO	LAST SHEET
ACRIP RESURFACING	2024	16	



BEGIN PROJECT  
AND WORK  
STA. 0+00

END PROJECT  
AND WORK  
STA. 51+33

SITE 25			
6TH ST. EXTENSION (FROM SCOTT RD. TO TRUSSELL RD.)			
ITEM NO.	PLAN QUANTITY	UNIT	DESCRIPTION
1	12547	SY	BITUMINOUS TREATMENT G
3	1035	TONS	SUPERPAVE BITUMINOUS CONCRETE WEARING SURFACE LAYER (165 LB/SY)
6	0	TONS	SUPERPAVE BITUMINOUS CONCRETE UPPER BINDER LAYER, LEVELING
8	1.94	MILE	SOLID YELLOW, CLASS 2, TYPE A TRAFFIC STRIPE
10	1.94	MILE	SOLID TEMPORARY TRAFFIC STRIPE
11	108	SF	TRAFFIC CONTROL MARKINGS, CLASS 2, TYPE A
12	72	SF	TEMPORARY TRAFFIC CONTROL MARKINGS



BEGIN PROJECT  
AND WORK  
STA. 0+00

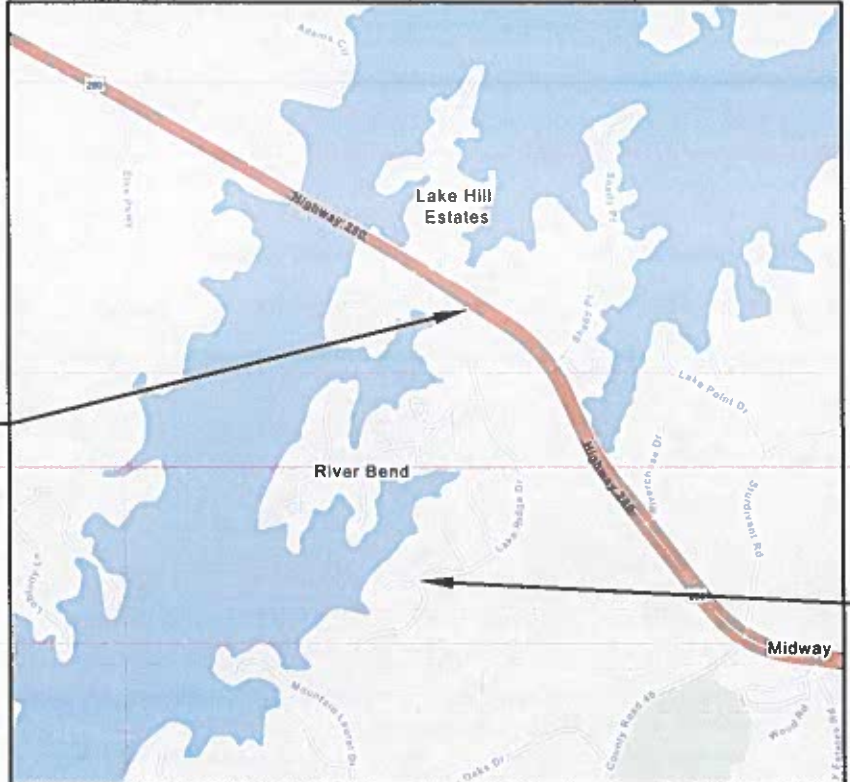
END PROJECT  
AND WORK  
STA. 38+30

SITE 26			
STOWE FERRY LANDING (FROM COLEY CREEK RD TO DEAD END)			
ITEM NO.	PLAN QUANTITY	UNIT	DESCRIPTION
1	9362	SY	BITUMINOUS TREATMENT G
4	468	TONS	SUPERPAVE BITUMINOUS CONCRETE WEARING LAYER, THIN LIFT MIX
6	0	TONS	SUPERPAVE BITUMINOUS CONCRETE UPPER BINDER LAYER, LEVELING
8	1.45	MILE	SOLID YELLOW, CLASS 2, TYPE A TRAFFIC STRIPE
10	1.45	MILE	SOLID TEMPORARY TRAFFIC STRIPE
11	120	SF	TRAFFIC CONTROL MARKINGS, CLASS 2, TYPE A
12	96	SF	TEMPORARY TRAFFIC CONTROL MARKINGS



# SITE DETAIL SHEET (27-28)

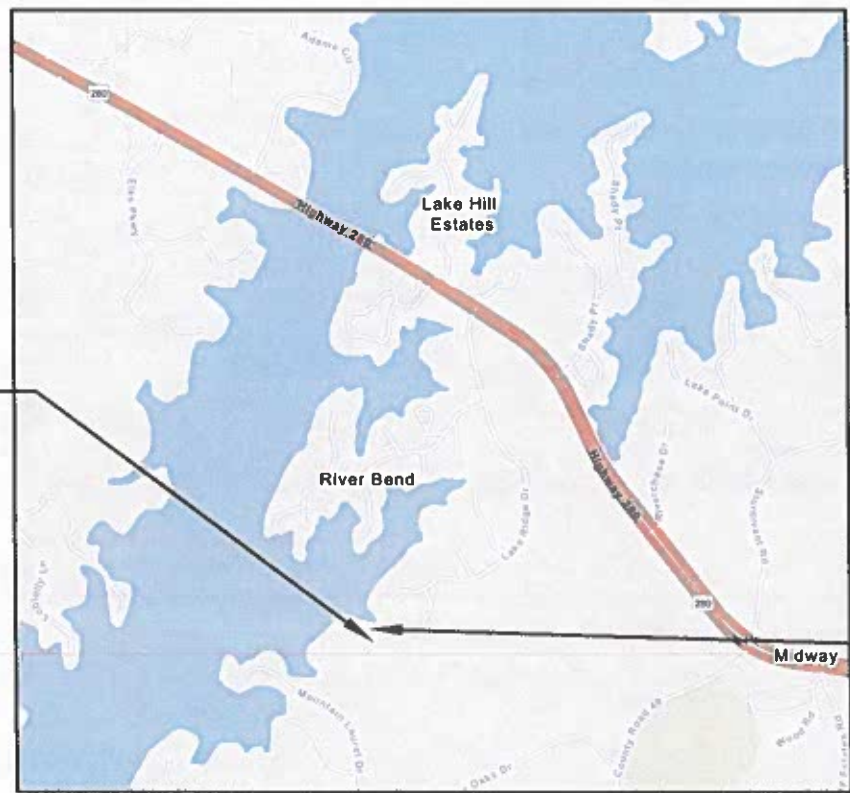
PROJECT REFERENCE	FISCAL YEAR	SHEET NO	LAST SHEET
ACRIP RESURFACING	2024	17	



BEGIN PROJECT  
AND WORK  
STA. 0+00

END PROJECT  
AND WORK  
STA. 45+51

SITE 27			
LAKE RIDGE DR. (FROM US 280 TO SHADY RIDGE CIR.)			
ITEM NO.	PLAN QUANTITY	UNIT	DESCRIPTION
3	918	TONS	SUPERPAVE BITUMINOUS CONCRETE WEARING SURFACE LAYER (165 LB/SY)
6	20	TONS	SUPERPAVE BITUMINOUS CONCRETE UPPER BINDER LAYER, LEVELING
11	30	SF	TRAFFIC CONTROL MARKINGS, CLASS 2, TYPE A
12	24	SF	TEMPORARY TRAFFIC CONTROL MARKINGS



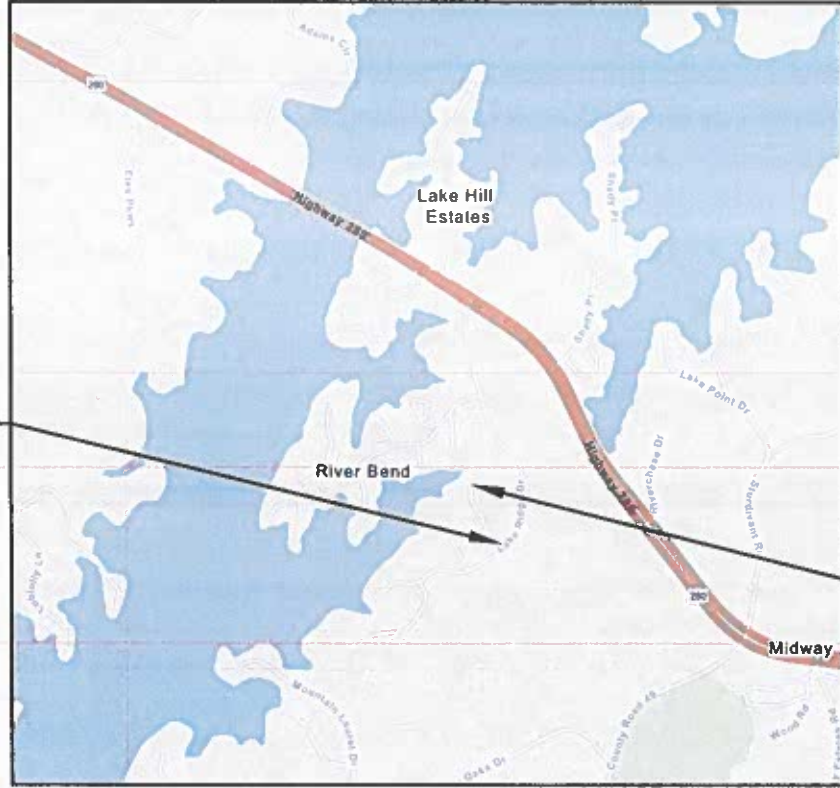
BEGIN PROJECT  
AND WORK  
STA. 0+00

END PROJECT  
AND WORK  
STA. 1+70

SITE 28			
HICKORY LANE ( FROM LAKE RIDGE DR. TO CUL-DE-SAC)			
ITEM NO.	PLAN QUANTITY	UNIT	DESCRIPTION
3	46	TONS	SUPERPAVE BITUMINOUS CONCRETE WEARING SURFACE LAYER (165 LB/SY)
6	0	TONS	SUPERPAVE BITUMINOUS CONCRETE UPPER BINDER LAYER, LEVELING

# SITE DETAIL SHEET (29-30)

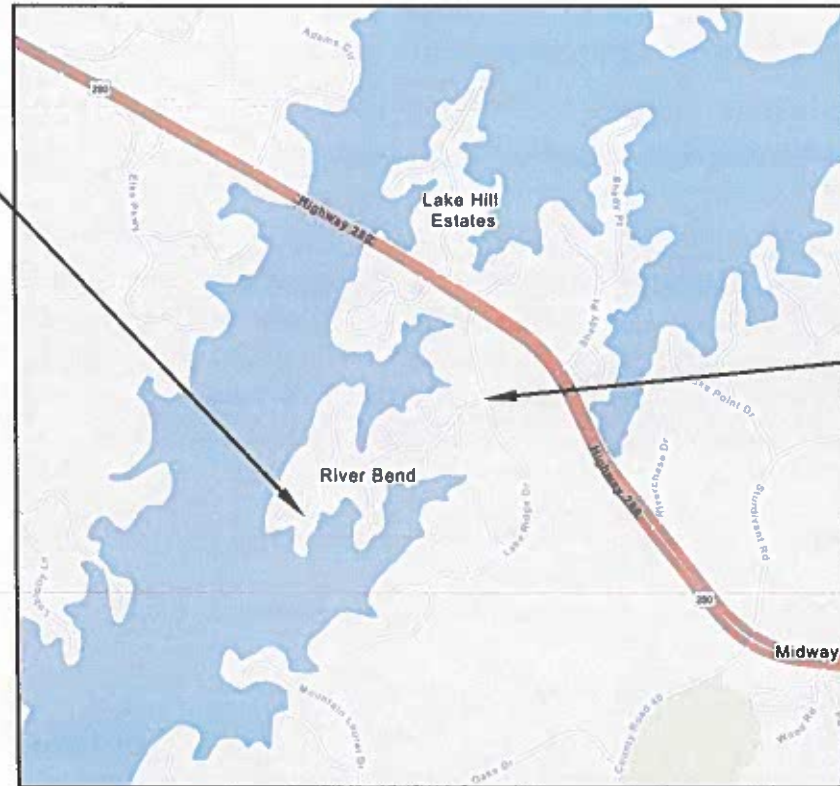
PROJECT REFERENCE	FISCAL YEAR	SHEET NO	LAST SHEET
ACRIP RESURFACING	2024	18	



BEGIN PROJECT  
AND WORK  
STA. 0+00

END PROJECT  
AND WORK  
STA. 5+50

SITE 29			
BUENA VISTA CIR (FROM LAKE RIDGE DR. TO CUL-DE-SAC)			
ITEM NO.	PLAN QUANTITY	UNIT	DESCRIPTION
3	111	TONS	SUPERPAVE BITUMINOUS CONCRETE WEARING SURFACE LAYER (165 LB/SY)
6	0	TONS	SUPERPAVE BITUMINOUS CONCRETE UPPER BINDER LAYER, LEVELING



END PROJECT  
AND WORK  
STA. 27+64

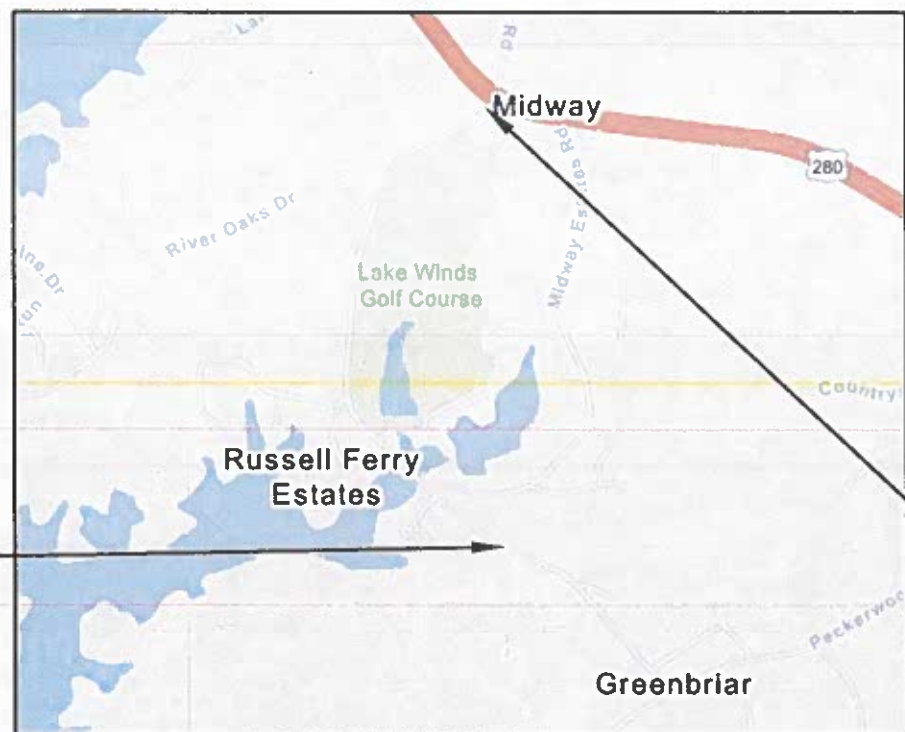
BEGIN PROJECT  
AND WORK  
STA. 0+00

SITE 28			
RIVER RUN ( FROM LAKE RIDGE DR. TO CUL-DE-SAC)			
ITEM NO.	PLAN QUANTITY	UNIT	DESCRIPTION
3	557	TONS	SUPERPAVE BITUMINOUS CONCRETE WEARING SURFACE LAYER (165 LB/SY)
6	0	TONS	SUPERPAVE BITUMINOUS CONCRETE UPPER BINDER LAYER, LEVELING



# SITE DETAIL SHEET (30)

PROJECT REFERENCE	FISCAL YEAR	SHEET NO	LAST SHEET
ACRIP RESURFACING	2024	19	



SITE 25			
6TH ST. EXTENSION (FROM SCOTT RD. TO TRUSSELL RD.)			
ITEM NO.	PLAN QUANTITY	UNIT	DESCRIPTION
1	18328	SY	BITUMINOUS TREATMENT G
3	1512	TONS	SUPERPAVE BITUMINOUS CONCRETE WEARING SURFACE LAYER (165 LB/SY)
6	20	TONS	SUPERPAVE BITUMINOUS CONCRETE UPPER BINDER LAYER, LEVELING
8	2.84	MILE	SOLID YELLOW, CLASS 2, TYPE A TRAFFIC STRIPE
10	2.84	MILE	SOLID TEMPORARY TRAFFIC STRIPE
11	90	SF	TRAFFIC CONTROL MARKINGS, CLASS 2, TYPE A
12	72	SF	TEMPORARY TRAFFIC CONTROL MARKINGS