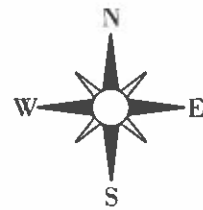


PROJECT REFERENCE	FISCAL YEAR	SHEET NO	LAST SHEET
ACRIP RESURFACING	2024	1	19

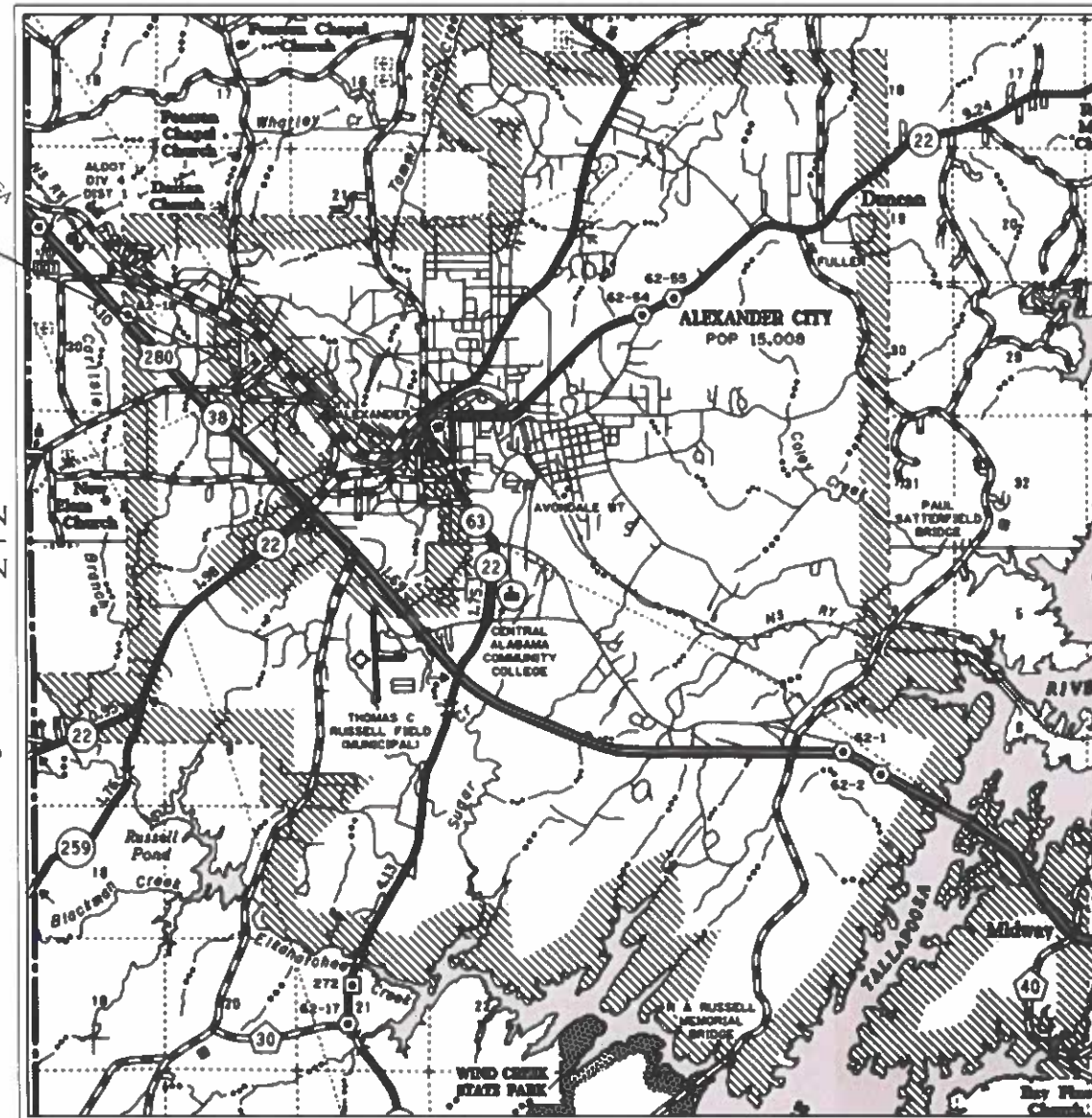
# CITY OF ALEXANDER CITY

PLANS OF PROPOSED PROJECT:  
 ACRIP FY 24  
 RESURFACING CITY STREETS - VARIOUS  
 ALEXANDER CITY, ALABAMA  
 TALLAPOOSA COUNTY

PROJECT LOCATION



TNSHP 23N  
 TNSHP 22N



VICINITY MAP  
 NOT TO SCALE

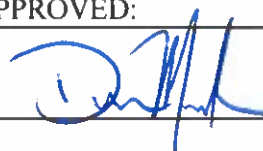
RNG 21E | RNG 22E

EQUATIONS AND EXCEPTIONS  
 NONE

	FEET	MILE
NET LENGTH OF PROJECT	88,433	16.748

## INDEX TO SHEETS

SHEET NO.	DESCRIPTION
1	TITLE SHEET
2	PROJECT NOTES
3	SUMMARY OF QUANTITIES
3-19	SITE DETAIL SHEETS

APPROVED:  
  
 CITY ENGINEER



ALEXANDER CITY  
 ALABAMA

# PROJECT NOTES

PROJECT REFERENCE	FISCAL YEAR	SHEET NO	LAST SHEET
ACRIP RESURFACING	2024	2	19

- 200 SPECIFICATIONS FOR THE PROJECT AND ALL WORK SHALL COMPLY WITH THE ALABAMA DEPARTMENT OF TRANSPORTATION (ALDOT), STANDARD SPECIFICATIONS FOR HIGHWAY CONSTRUCTION, 2022, UNLESS OTHERWISE SPECIFIED.
  
- 201 THE REQUIREMENT FOR PAVEMENT DENSITY TESTING IS WAIVED. A ROLLING PATTERN WILL BE ESTABLISHED BY THE CONTRACTOR ON ALL ROADS THAT MEASURE GREATER THAN 1000 FEET ALONG THE CENTERLINE OF THE ROAD. TO ESTABLISH THE ROLLING PATTERN, A DENSITY GAUGE SHOULD BE USED TO DETERMINE THE NUMBER OF ROLLER PASSES THAT CORRELATE WITH THE MAXIMUM DENSITY FOR THAT PARTICULAR ROAD.
  
- 202 ITEM 5, BITUMINOUS CONCRETE UPPER BINDER LAYER, PATCHING, AND ITEM 6, BITUMINOUS CONCRETE UPPER BINDER LAYER, LEVELING, SHALL BE PLACED AT RATES AND LOCATIONS AS DIRECTED BY THE ENGINEER.
  
- 203 TACK COAT WILL BE A SUBSIDIARY OF THE WEARING SURFACE ITEMS AND SHALL BE APPLIED WITH PRACTICES AND AT RATES SPECIFIED IN THE ALDOT STANDARD SPECIFICATIONS FOR HIGHWAY CONSTRUCTION.
  
- 204 ITEM 4, SUPERPAVE BITUMINOUS CONCRETE WEARING LAYER, THIN LIFT MIX, SHALL BE FREE OF RECYCLED ASPHALT MATERIALS.
  
- 205 A MINIMUM 25 FOOT TAPER IN THE WEARING SURFACE THICKNESS WILL BE REQUIRED AT BEGINNING AND END OF THE PROJECT.
  
- 206 INTERSECTING PAVED CITY STREETS WILL BE RESURFACED BACK TO THE RIGHT OF WAY LINE OR THE PROJECT STREET.
  
  
- 300 AN ADEQUATE TRAFFIC CONTROL PLAN WILL BE THE RESPONSIBILITY OF THE CONTRACTOR. A FORMAL WRITTEN TRAFFIC CONTROL PLAN MUST BE DEVELOPED BY THE CONTRACTOR FOR ALL WORK WITHIN THIS CONTRACT AND MUST BE SUBMITTED TO THE CITY ENGINEER AT LEAST ONE WEEK PRIOR TO THE PRE-CONSTRUCTION CONFERENCE FOR REVIEW. TRAFFIC CONTROL MEASURES MAY BE INSPECTED BY THE CITY ENGINEER ON A DAILY BASIS. THE ENGINEER RESERVES THE RIGHT TO CEASE OPERATIONS DURING CONSTRUCTION IN THE EVENT ADEQUATE TRAFFIC CONTROL MEASURES ARE NOT IMPLEMENTED.

- 400 THE CONTRACTOR IS RESPONSIBLE FOR ADJUSTING THE THE ELEVATION OF UTILITY MANHOLES AND UTILITY VALVES DURING PAVING OPERATIONS; HOWEVER; THIS WILL BE LIMITED TO PLACEMENT OF APPROPRIATE RISERS, WHICH WILL BE PROVIDED BY THE CITY. THE CONTRACTOR SHOULD NOTIFY THE CITY ENGINEER IMMEDIATELY SHOULD A MANHOLE OF VALVE REQUIRE ANY ADJUSTMENT NOT COVERED BY THE RISERS
  
- 500 THE QUANTITIES ARE TO BE CONSIDERED AS APPROXIMATE AND MAY BE AMENDED TO INCLUDE ADDITIONAL QUANTITIES OR ADDITIONAL ITEMS, OR TO DECREASE QUANTITIES OR TO EXCLUDE ITEMS OF WORK. THE LIST OF STREETS SHOWN SHOULD BE CONSIDERED PRELIMINARY AND MAY BE AMENDED TO INCLUDE ADDITIONAL STREETS OR TO DECREASE AS DICTATED BY PROJECT FUNDING.

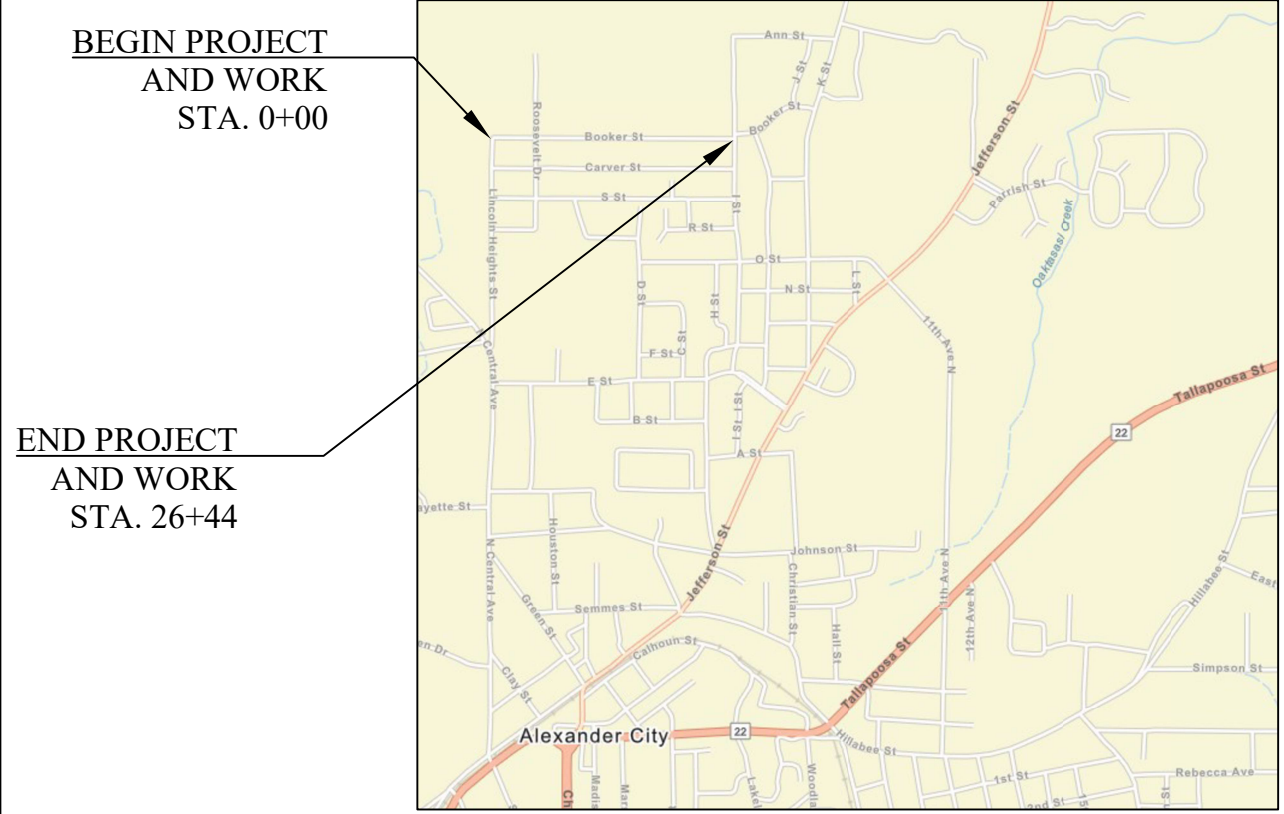
# SUMMARY OF QUANTITIES

PROJECT REFERENCE	FISCAL YEAR	SHEET NO	LAST SHEET
ACRIP RESURFACING	2024	3	19

ITEM NO.	PLAN QUANTITY	UNIT	DESCRIPTION
1	128,683	SQUARE YARD	BITUMINOUS TREATMENT G
2	38,294	SQUARE YARD	PLANING EXISTING PAVEMENT (APPROXIMATELY 1.10" THRU 2.0" THICK)
3	12,745	TON	SUPERPAVE BITUMINOUS CONCRETE WEARING SURFACE LAYER, 3/8" MAXIMUM AGGREGATE SIZE MIX, ESAL RANGE A/B (APPROXIMATELY 165 LB/SY)
4	2,844	TON	SUPERPAVE BITUMINOUS CONCRETE WEARING LAYER, THIN LIFT MIX, ESAL RANGE A/B (APPROXIMATELY 100 LB/SY)
5	400	TON	SUPERPAVE BITUMINOUS CONCRETE UPPER BINDER LAYER, PATCHING, 1" MAXIMUM AGGREGATE SIZE MIX, ESAL RANGE A/B
6	900	TON	SUPERPAVE BITUMINOUS CONCRETE UPPER BINDER LAYER, LEVELING, 3/8" MAXIMUM AGGREGATE SIZE MIX, ESAL RANGE A/B
7	1	LUMP SUM	MOBILIZATION
8	13.42	MILE	SOLID YELLOW, CLASS 2, TYPE A TRAFFIC STRIPE
9	0	MILE	BROKEN YELLOW, CLASS 2, TYPE A TRAFFIC STRIPE
10	13.42	MILE	SOLID TEMPORARY TRAFFIC STRIPE
11	2624	SQUARE FOOT	TRAFFIC CONTROL MARKINGS, CLASS 2, TYPE A
12	1824	SQUARE FOOT	TEMPORARY TRAFFIC CONTROL MARKINGS
13	1	LUMP SUM	TRAFFIC CONTROL SCHEME

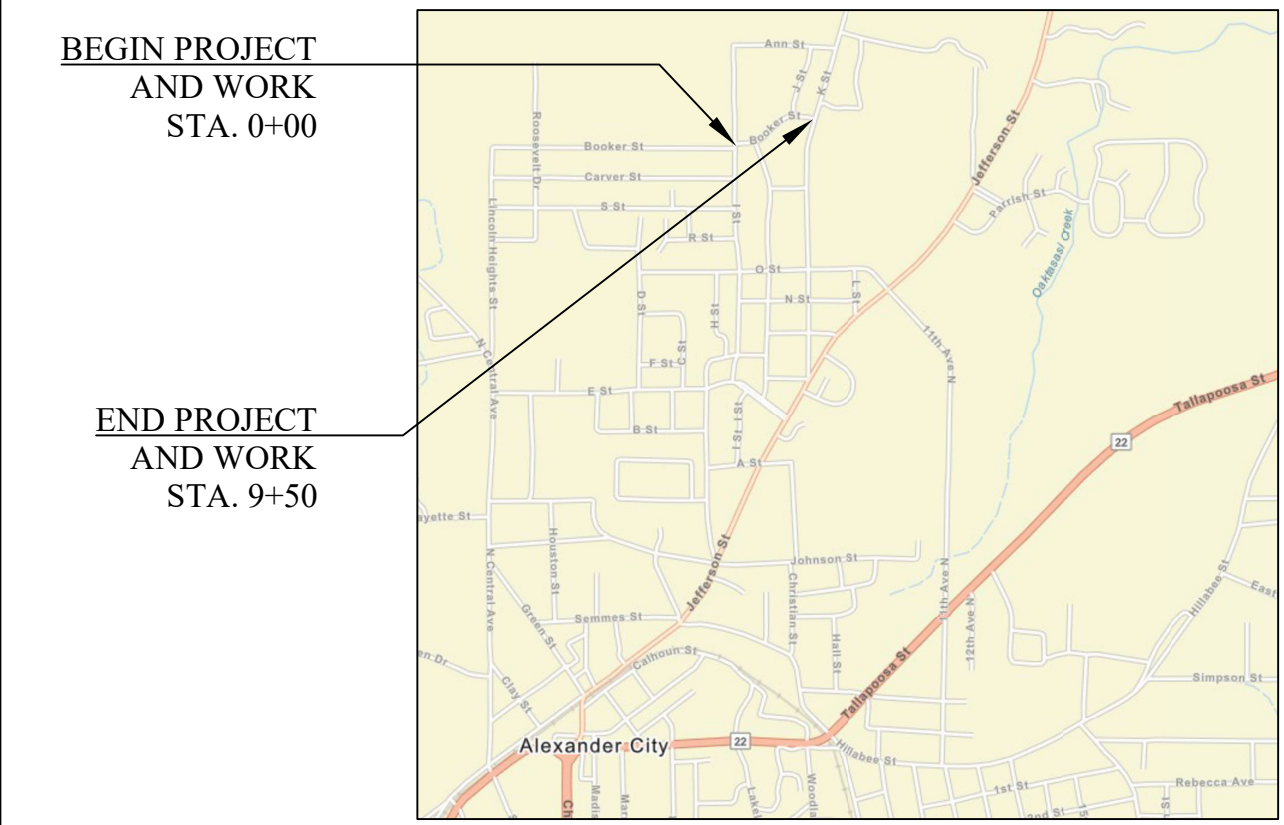
# SITE DETAIL SHEET (1-2)

PROJECT REFERENCE	FISCAL YEAR	SHEET NO	LAST SHEET
ACRIP RESURFACING	2024	4	19



SITE 1			
BOOKER ST. (FROM LINCOLN HEIGHTS ST. TO I ST.)			
ITEM NO.	PLAN QUANTITY	UNIT	DESCRIPTION
2	7050	SY	PLANING EXISTING PAVEMENT (APPROXIMATELY 1.10" THRU 2.0" THICK)
3	582	TONS	SUPERPAVE BITUMINOUS CONCRETE WEARING SURFACE LAYER (165 LB/SY)
6	45	TONS	SUPERPAVE BITUMINOUS CONCRETE UPPER BINDER LAYER, LEVELING
11	112	SF	TRAFFIC CONTROL MARKINGS, CLASS 2, TYPE A
12	96	SF	TEMPORARY TRAFFIC CONTROL MARKINGS

TRAFFIC CONTROL MARKINGS, CLASS 2, TYPE A			TEMPORARY TRAFFIC CONTROL MARKINGS		
STA.	REMARKS	SQ. FT.	STA.	REMARKS	SQ. FT.
0+00	STOP LINE @ LINCOLN HEIGHTS ST.	30	0+00	STOP LINE @ LINCOLN HEIGHTS ST.	24
4+53	STOP LINE @ ROOSEVELT DR. N.	26	4+53	STOP LINE @ ROOSEVELT DR. N.	24
4+53	STOP LINE @ ROOSEVELT DR S.	26	4+53	STOP LINE @ ROOSEVELT DR S.	24
26+44	STOP LINE @ I ST.	30	26+44	STOP LINE @ I ST.	24



SITE 2			
BOOKER ST. (FROM I ST. TO K. ST)			
ITEM NO.	PLAN QUANTITY	UNIT	DESCRIPTION
2	2639	SY	PLANING EXISTING PAVEMENT (APPROXIMATELY 1.10" THRU 2.0" THICK)
3	218	TONS	SUPERPAVE BITUMINOUS CONCRETE WEARING SURFACE LAYER (165 LB/SY)
6	10	TONS	SUPERPAVE BITUMINOUS CONCRETE UPPER BINDER LAYER, LEVELING
11	60	SF	TRAFFIC CONTROL MARKINGS, CLASS 2, TYPE A
12	48	SF	TEMPORARY TRAFFIC CONTROL MARKINGS

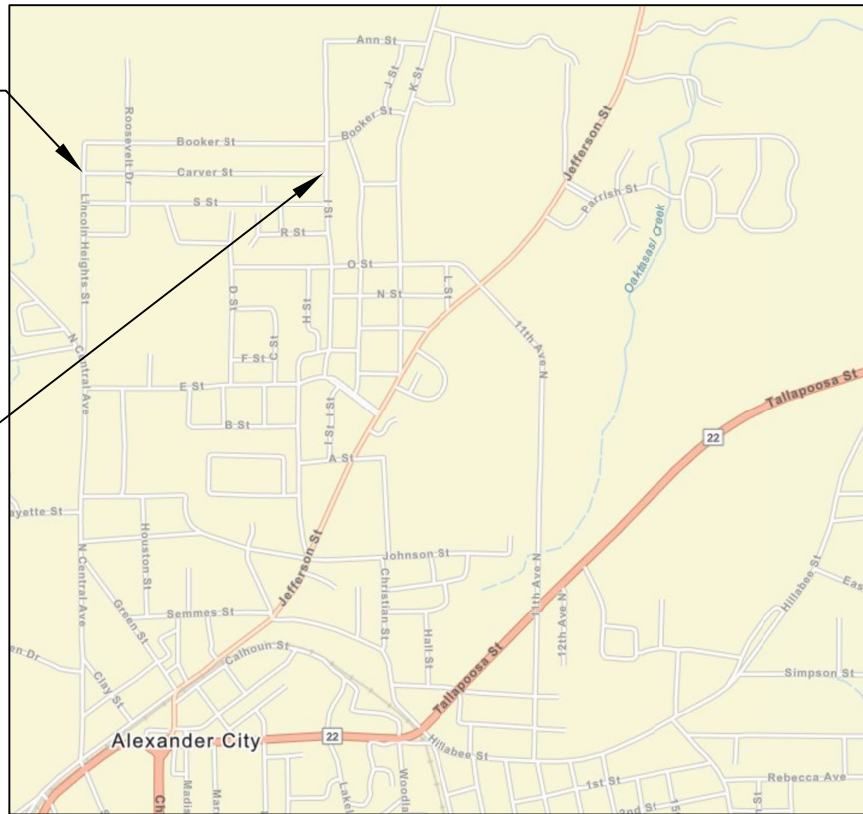
TRAFFIC CONTROL MARKINGS, CLASS 2, TYPE A			TEMPORARY TRAFFIC CONTROL MARKINGS		
STA.	REMARKS	SQ. FT.	STA.	REMARKS	SQ. FT.
0+00	STOP LINE @ I ST.	30	0+00	STOP LINE @ I ST.	24
9+50	STOP LINE @ K ST.	30	9+50	STOP LINE @ K ST.	24

# SITE DETAIL SHEET (3-4)

PROJECT REFERENCE	FISCAL YEAR	SHEET NO	LAST SHEET
ACRIP RESURFACING	2024	5	19

BEGIN PROJECT  
AND WORK  
STA. 0+00

END PROJECT  
AND WORK  
STA. 26+44

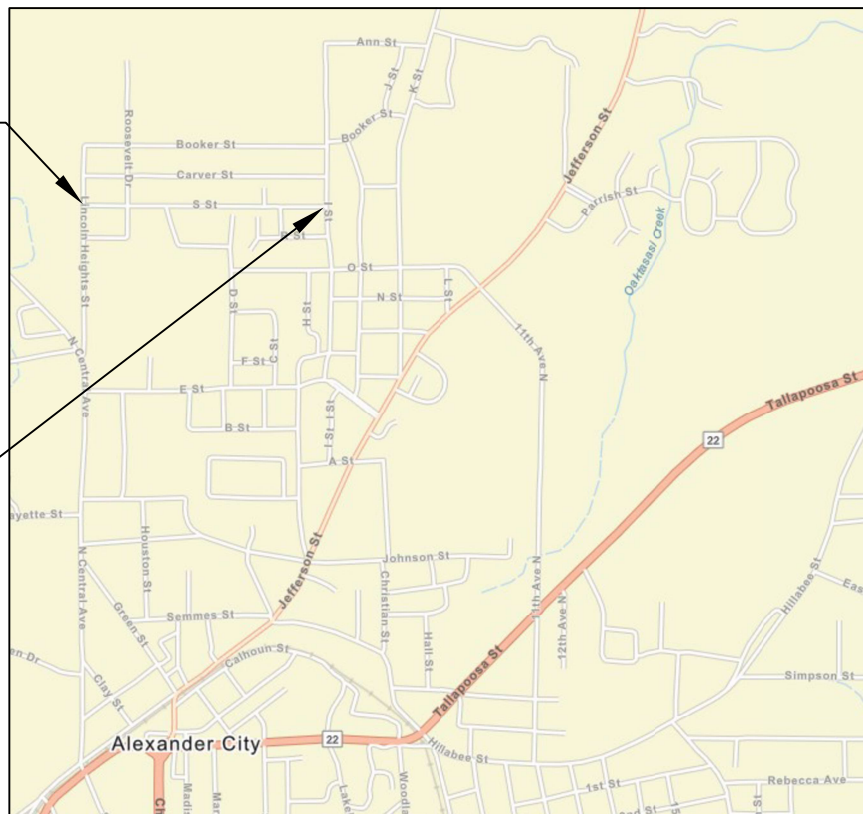


SITE 3			
CARVER ST. (FROM LINCOLN HEIGHTS ST. TO I ST.)			
ITEM NO.	PLAN QUANTITY	UNIT	DESCRIPTION
3	436	TONS	SUPERPAVE BITUMINOUS CONCRETE WEARING SURFACE LAYER (165 LB/SY)
6	20	TONS	SUPERPAVE BITUMINOUS CONCRETE UPPER BINDER LAYER, LEVELING
11	112	SF	TRAFFIC CONTROL MARKINGS, CLASS 2, TYPE A
12	96	SF	TEMPORARY TRAFFIC CONTROL MARKINGS

TRAFFIC CONTROL MARKINGS, CLASS 2, TYPE A			TEMPORARY TRAFFIC CONTROL MARKINGS		
STA.	REMARKS	SQ. FT.	STA.	REMARKS	SQ. FT.
0+00	STOP LINE @ LINCOLN HEIGHTS ST.	30	0+00	STOP LINE @ LINCOLN HEIGHTS ST.	24
4+53	STOP LINE @ ROOSEVELT DR. N.	26	4+53	STOP LINE @ ROOSEVELT DR. N.	24
4+53	STOP LINE @ ROOSEVELT DR S.	26	4+53	STOP LINE @ ROOSEVELT DR S.	24
26+44	STOP LINE @ I ST.	30	26+44	STOP LINE @ I ST.	24

BEGIN PROJECT  
AND WORK  
STA. 0+00

END PROJECT  
AND WORK  
STA. 26+44



SITE 4			
S ST. (FROM LINCOLN HEIGHTS ST. TO I ST.)			
ITEM NO.	PLAN QUANTITY	UNIT	DESCRIPTION
3	533	TONS	SUPERPAVE BITUMINOUS CONCRETE WEARING SURFACE LAYER (165 LB/SY)
6	50	TONS	SUPERPAVE BITUMINOUS CONCRETE UPPER BINDER LAYER, LEVELING
11	160	SF	TRAFFIC CONTROL MARKINGS, CLASS 2, TYPE A
12	144	SF	TEMPORARY TRAFFIC CONTROL MARKINGS

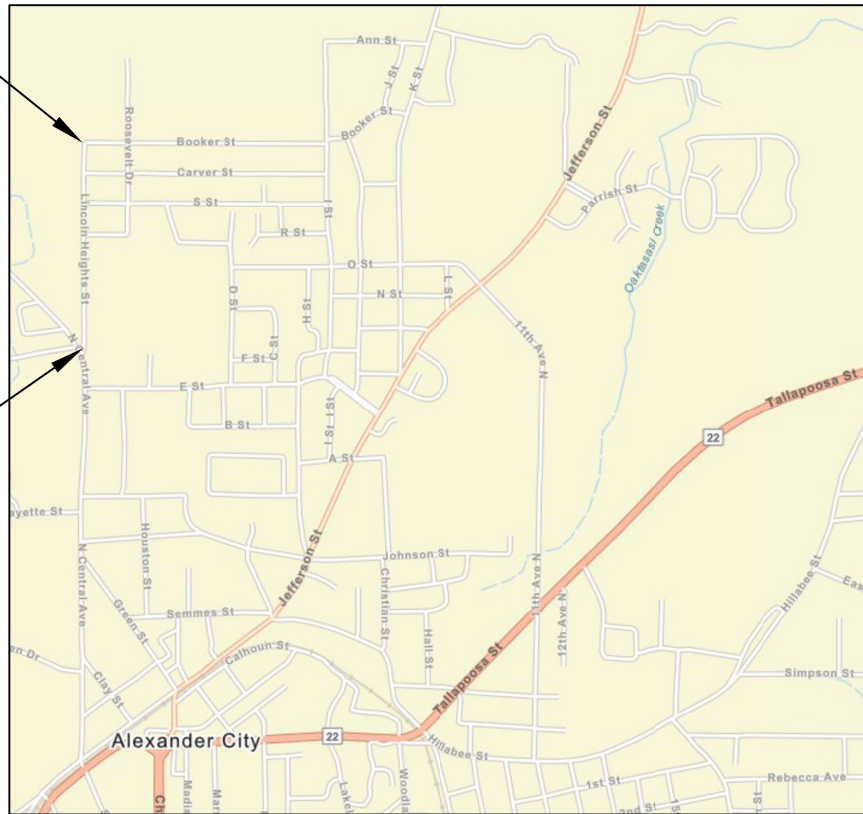
TRAFFIC CONTROL MARKINGS, CLASS 2, TYPE A			TEMPORARY TRAFFIC CONTROL MARKINGS		
STA.	REMARKS	SQ. FT.	STA.	REMARKS	SQ. FT.
0+00	STOP LINE @ LINCOLN HEIGHTS ST.	30	0+00	STOP LINE @ LINCOLN HEIGHTS ST.	24
4+53	STOP LINE @ ROOSEVELT DR. N.	26	4+53	STOP LINE @ ROOSEVELT DR. N.	24
4+53	STOP LINE @ ROOSEVELT DR S.	26	4+53	STOP LINE @ ROOSEVELT DR S.	24
8+63	STOP LINE @ U ST.	24	8+63	STOP LINE @ U ST.	24
21+44	STOP LINE @ C PL.	24	21+44	STOP LINE @ C PL.	24
26+44	STOP LINE @ I ST.	30	26+44	STOP LINE @ I ST.	24

# SITE DETAIL SHEET (5-6)

PROJECT REFERENCE	FISCAL YEAR	SHEET NO	LAST SHEET
ACRIP RESURFACING	2024	6	19

END PROJECT  
AND WORK  
STA. 24+09

BEGIN PROJECT  
AND WORK  
STA. 0+00



## SITE 5

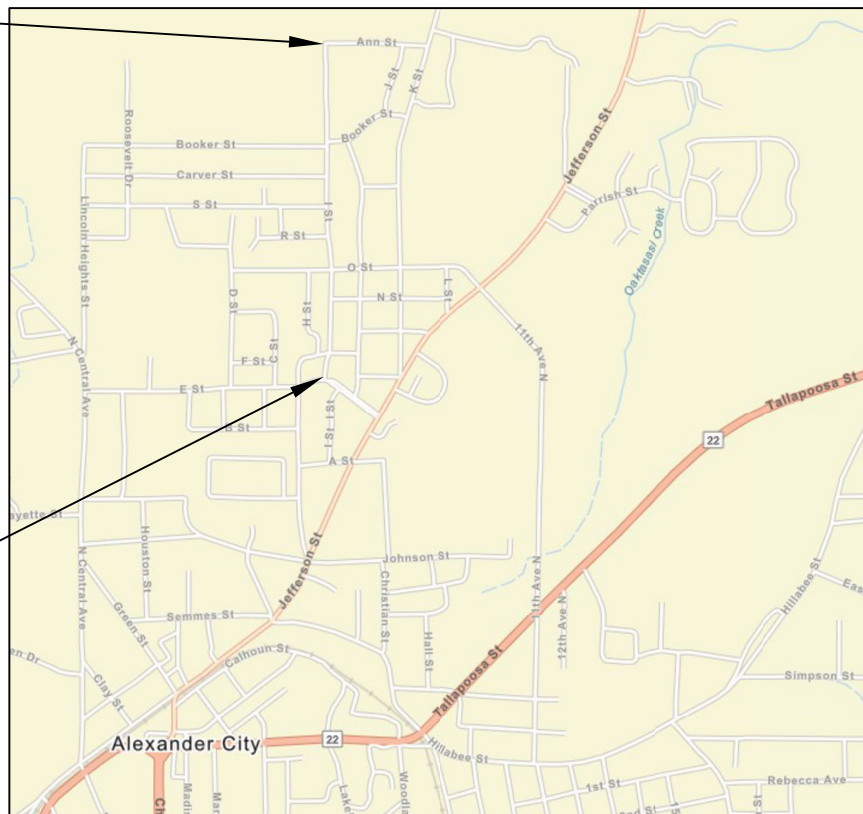
### LINCOLN HEIGHTS ST. (FROM N. CENTRAL AVE. TO BOOKER ST.)

ITEM NO.	PLAN QUANTITY	UNIT	DESCRIPTION
2	5353	SY	PLANING EXISTING PAVEMENT (APPROXIMATELY 1.10" THRU 2.0" THICK)
3	442	TONS	SUPERPAVE BITUMINOUS CONCRETE WEARING SURFACE LAYER (165 LB/SY)
6	35	TONS	SUPERPAVE BITUMINOUS CONCRETE UPPER BINDER LAYER, LEVELING
11	30	SF	TRAFFIC CONTROL MARKINGS, CLASS 2, TYPE A
12	24	SF	TEMPORARY TRAFFIC CONTROL MARKINGS

TRAFFIC CONTROL MARKINGS, CLASS 2, TYPE A			TEMPORARY TRAFFIC CONTROL MARKINGS		
STA.	REMARKS	SQ. FT.	STA.	REMARKS	SQ. FT.
0+00	STOP LINE @ N. CENTRAL AVE.	30	0+00	STOP LINE @ N. CENTRAL AVE.	24

END PROJECT  
AND WORK  
STA. 36+40

BEGIN PROJECT  
AND WORK  
STA. 0+00



## SITE 6

### I ST. (FROM MARTIN LUTHER KING JR. BLVD. TO ANN ST.)

ITEM NO.	PLAN QUANTITY	UNIT	DESCRIPTION
1	8898	SY	BITUMINOUS TREATMENT G
3	734	TONS	SUPERPAVE BITUMINOUS CONCRETE WEARING SURFACE LAYER (165 LB/SY)
6	60	TONS	SUPERPAVE BITUMINOUS CONCRETE UPPER BINDER LAYER, LEVELING
11	328	SF	TRAFFIC CONTROL MARKINGS, CLASS 2, TYPE A
12	120	SF	TEMPORARY TRAFFIC CONTROL MARKINGS

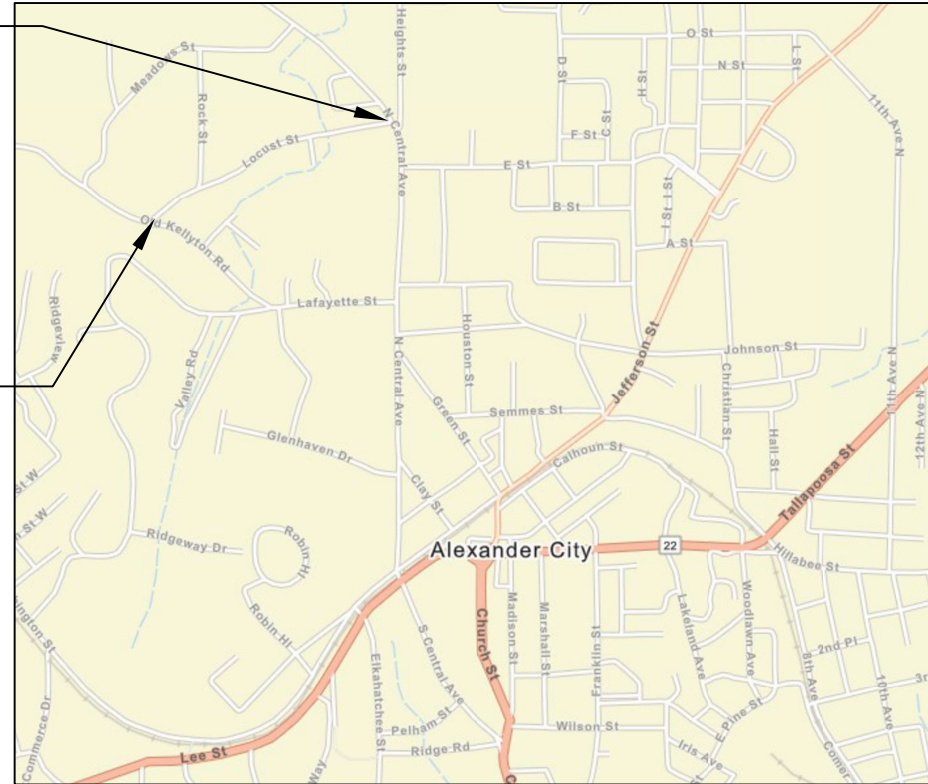
TRAFFIC CONTROL MARKINGS, CLASS 2, TYPE A			TEMPORARY TRAFFIC CONTROL MARKINGS		
STA.	REMARKS	SQ. FT.	STA.	REMARKS	SQ. FT.
0+00	STOP LINE @ M L KING BLVD.	32	0+00	STOP LINE @ M L KING BLVD.	24
2+95	CROSS WALK @ ALFRED COOPER ST.	196			
11+83	STOP LINE @ O ST. N.L.	26	11+83	STOP LINE @ O ST. N.L.	24
11+83	STOP LINE @ O ST. S.L.	26	11+83	STOP LINE @ O ST. S.L.	24
11+83	STOP LINE @ O ST. LEFT	24	11+83	STOP LINE @ O ST. LEFT	24
11+83	STOP LINE @ O ST. RIGHT	24	11+83	STOP LINE @ O ST. RIGHT	24

SHEET TITLE  
SITE DETAIL 5-6

# SITE DETAIL SHEET (7-8)

PROJECT REFERENCE	FISCAL YEAR	SHEET NO	LAST SHEET
ACRIP RESURFACING	2024	7	19

**END PROJECT  
AND WORK  
STA. 26+60**

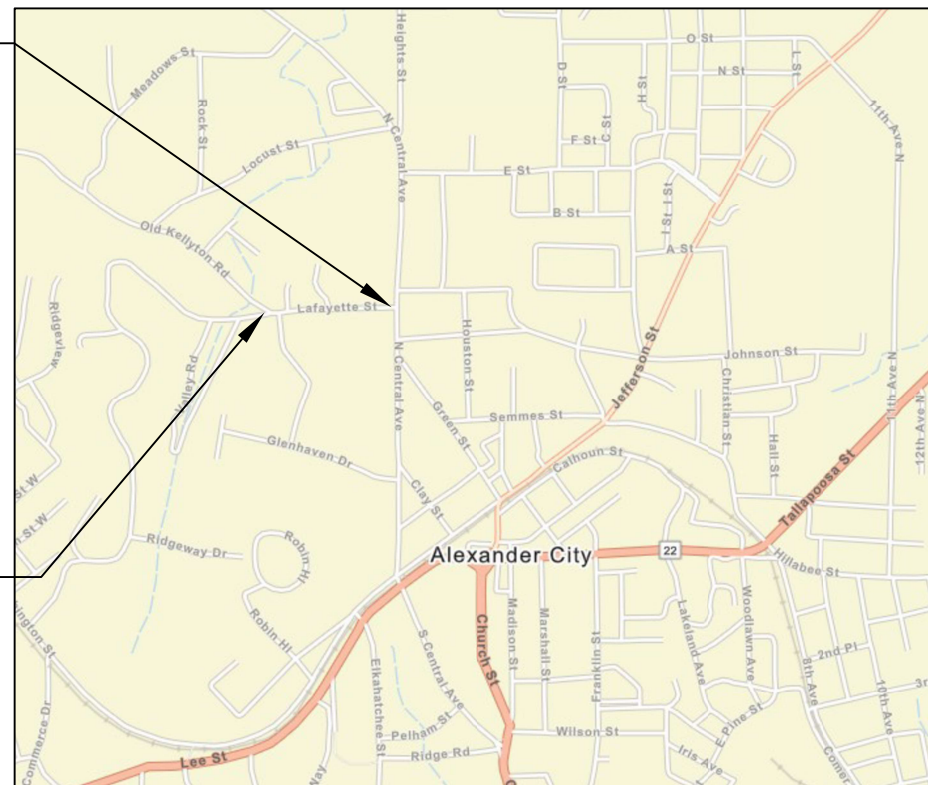


**BEGIN PROJECT  
AND WORK  
STA. 0+00**

SITE 7			
LOCUST ST. (FROM OLD KELLYTON RD. TO N. CENTRAL AVE.)			
ITEM NO.	PLAN QUANTITY	UNIT	DESCRIPTION
2	6502	SY	PLANING EXISTING PAVEMENT (APPROXIMATELY 1.10" THRU 2.0" THICK)
3	536	TONS	SUPERPAVE BITUMINOUS CONCRETE WEARING SURFACE LAYER (165 LB/SY)
11	72	SF	TRAFFIC CONTROL MARKINGS, CLASS 2, TYPE A
12	72	SF	TEMPORARY TRAFFIC CONTROL MARKINGS

TRAFFIC CONTROL MARKINGS, CLASS 2, TYPE A			TEMPORARY TRAFFIC CONTROL MARKINGS		
STA.	REMARKS	SQ. FT.	STA.	REMARKS	SQ. FT.
0+00	STOP LINE @ OLD KELLYTON RD.	24	0+00	STOP LINE @ OLD KELLYTON RD.	24
6+23	STOP LINE @ ROCK ST.	24	6+23	STOP LINE @ ROCK ST.	24
26+60	STOP LINE @ N. CENTRAL AVE.	24	26+60	STOP LINE @ N. CENTRAL AVE.	24

**END PROJECT  
AND WORK  
STA. 12+04**



**BEGIN PROJECT  
AND WORK  
STA. 0+00**

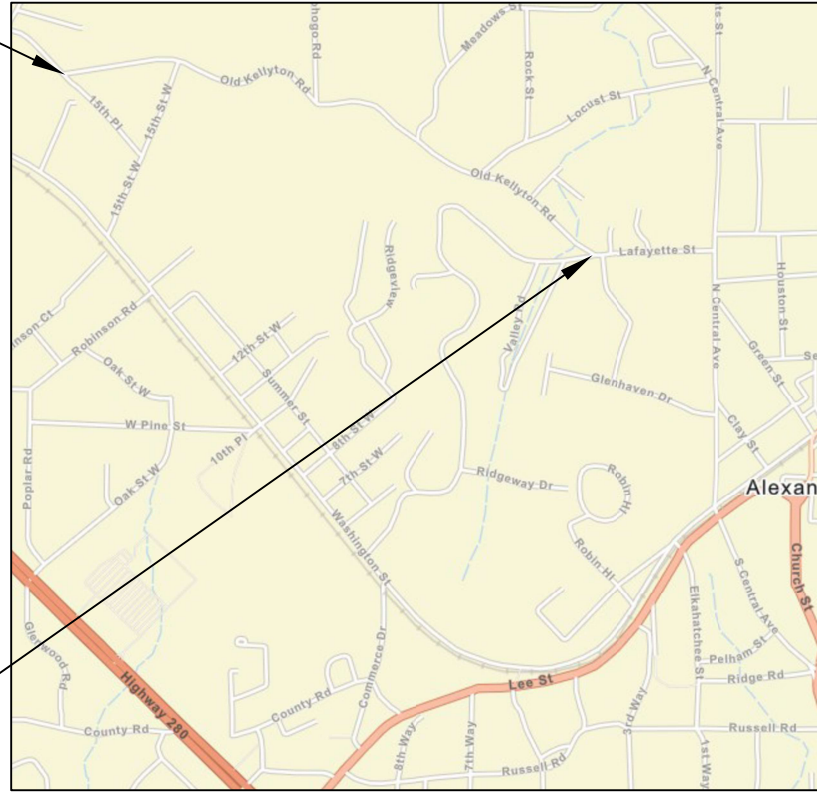
SITE 8			
LAFAYETTE ST. (FROM OLD KELLYTON RD TO N. CENTRAL AVE.)			
ITEM NO.	PLAN QUANTITY	UNIT	DESCRIPTION
3	147	TONS	SUPERPAVE BITUMINOUS CONCRETE WEARING SURFACE LAYER (165 LB/SY)
6	60	TONS	SUPERPAVE BITUMINOUS CONCRETE UPPER BINDER LAYER, LEVELING
11	50	SF	TRAFFIC CONTROL MARKINGS, CLASS 2, TYPE A
12	48	SF	TEMPORARY TRAFFIC CONTROL MARKINGS

TRAFFIC CONTROL MARKINGS, CLASS 2, TYPE A			TEMPORARY TRAFFIC CONTROL MARKINGS		
STA.	REMARKS	SQ. FT.	STA.	REMARKS	SQ. FT.
6+54	STOP LINE @ MAPLEWOOD LN.	24	6+54	STOP LINE @ MAPLEWOOD LN.	24
12+04	STOP LINE @ N. CENTRAL AVE.	26	12+04	STOP LINE @ N. CENTRAL AVE.	24

# SITE DETAIL SHEET (9-10)

PROJECT REFERENCE	FISCAL YEAR	SHEET NO	LAST SHEET
ACRIP RESURFACING	2024	8	19

BEGIN PROJECT  
AND WORK  
STA. 0+00

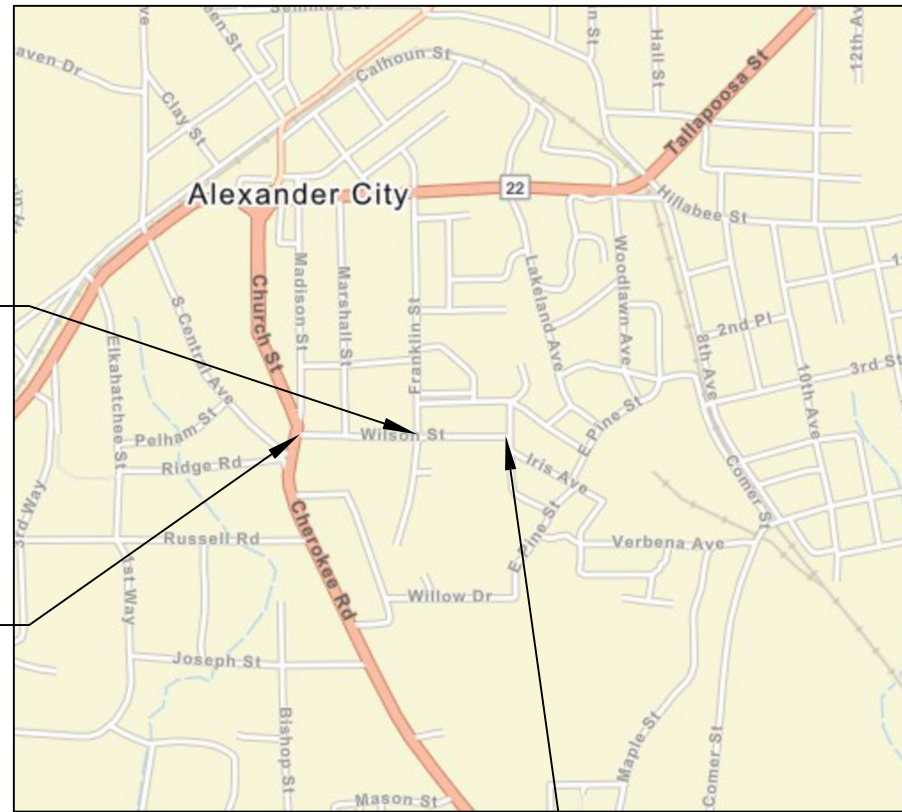


END PROJECT  
AND WORK  
STA. 63+39

SITE 9			
OLD KELLYTON RD. (FROM 15TH PL. TO RIDGEWAY DR.)			
ITEM NO.	PLAN QUANTITY	UNIT	DESCRIPTION
1	15495	SY	BITUMINOUS TREATMENT G
3	775	TONS	SUPERPAVE BITUMINOUS CONCRETE WEARING SURFACE LAYER (165 LB/SY)
6	80	TONS	SUPERPAVE BITUMINOUS CONCRETE UPPER BINDER LAYER, LEVELING
11	126	SF	TRAFFIC CONTROL MARKINGS, CLASS 2, TYPE A
12	120	SF	TEMPORARY TRAFFIC CONTROL MARKINGS

TRAFFIC CONTROL MARKINGS, CLASS 2, TYPE A			TEMPORARY TRAFFIC CONTROL MARKINGS		
STA.	REMARKS	SQ. FT.	STA.	REMARKS	SQ. FT.
0+00	STOP LINE @ 15TH PL.	24	0+00	STOP LINE @ 15TH PL.	24
11+87	STOP LINE @ 15TH ST. W.	24	11+87	STOP LINE @ 15TH ST. W.	24
26+41	STOP LINE @ MOHOGO RD.	24	26+41	STOP LINE @ MOHOGO RD.	24
41+87	STOP LINE @ MEADOWS ST.	24	41+87	STOP LINE @ MEADOWS ST.	24
63+39	STOP LINE @ RIDGEWAY DR.	30	63+39	STOP LINE @ RIDGEWAY DR.	24

END PLANING  
STA. 8+52



BEGIN PROJECT,  
WORK, AND  
PLANING  
STA. 0+00

END PROJECT  
AND WORK  
STA. 12+04

SITE 10			
WILSON ST. (FROM MADISON ST. TO ROSE AVE.)			
ITEM NO.	PLAN QUANTITY	UNIT	DESCRIPTION
2	2461	SY	PLANING EXISTING PAVEMENT (APPROXIMATELY 1.10" THRU 2.0" THICK)
3	359	TONS	SUPERPAVE BITUMINOUS CONCRETE WEARING SURFACE LAYER (165 LB/SY)
6	20	TONS	SUPERPAVE BITUMINOUS CONCRETE UPPER BINDER LAYER, LEVELING
11	436	SF	TRAFFIC CONTROL MARKINGS, CLASS 2, TYPE A
12	120	SF	TEMPORARY TRAFFIC CONTROL MARKINGS

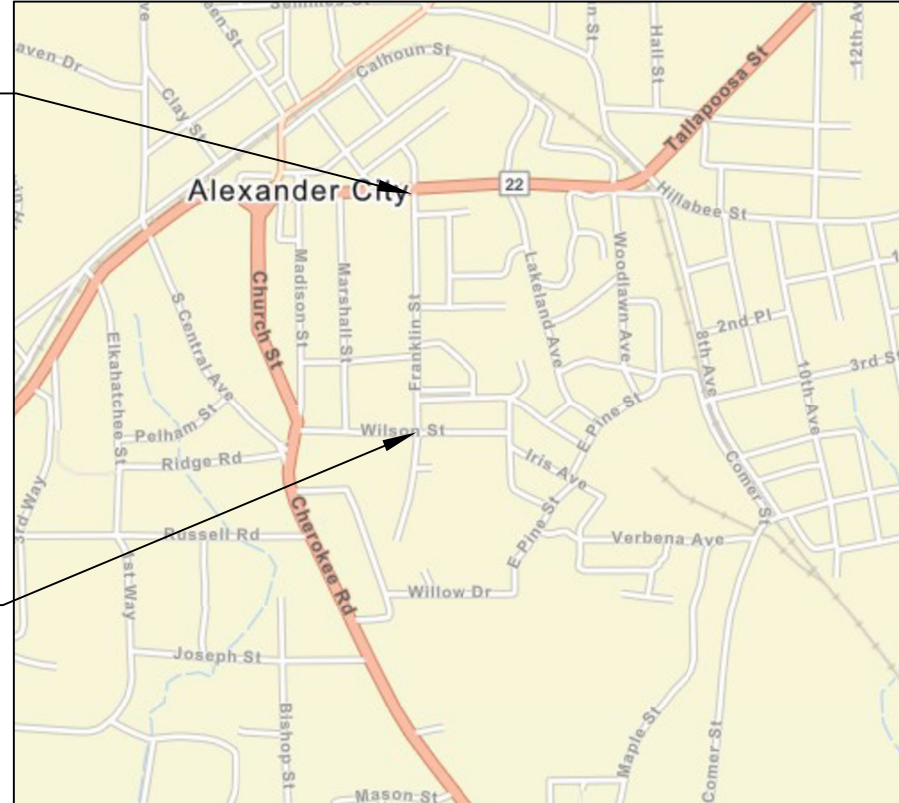
TRAFFIC CONTROL MARKINGS, CLASS 2, TYPE A			TEMPORARY TRAFFIC CONTROL MARKINGS		
STA.	REMARKS	SQ. FT.	STA.	REMARKS	SQ. FT.
3+20	STOP LINE @ MARSHALL ST.	36	3+20	STOP LINE @ MARSHALL ST.	24
4+54	CROSS WALK @ BRHS	140			
7+04	CROSS WALK @ BRHS	140			
8+27	STOP LINE @ FRANKLIN ST. E.L.	30	8+27	STOP LINE @ FRANKLIN ST. E.L.	24
8+27	STOP LINE @ FRANKLIN ST. W.L.	30	8+27	STOP LINE @ FRANKLIN ST. W.L.	24
8+27	STOP LINE @ FRANKLIN ST. LEFT	30	8+27	STOP LINE @ FRANKLIN ST. LEFT	24
8+27	STOP LINE @ FRANKLIN ST. RIGHT.	30	8+27	STOP LINE @ FRANKLIN ST. RIGHT.	24



# SITE DETAIL SHEET (11-12)

PROJECT REFERENCE	FISCAL YEAR	SHEET NO	LAST SHEET
ACRIP RESURFACING	2024	9	19

END PROJECT  
AND WORK  
STA. 63+39



BEGIN PROJECT  
AND WORK  
STA. 0+00

SITE 11			
FRANKLIN ST. (FROM WILSON ST. TO SR 22)			
ITEM NO.	PLAN QUANTITY	UNIT	DESCRIPTION
4	263	TONS	SUPERPAVE BITUMINOUS CONCRETE WEARING LAYER, THIN LIFT MIX
6	20	TONS	SUPERPAVE BITUMINOUS CONCRETE UPPER BINDER LAYER, LEVELING
11	48	SF	TRAFFIC CONTROL MARKINGS, CLASS 2, TYPE A
12	48	SF	TEMPORARY TRAFFIC CONTROL MARKINGS

TRAFFIC CONTROL MARKINGS, CLASS 2, TYPE A			TEMPORARY TRAFFIC CONTROL MARKINGS		
STA.	REMARKS	SQ. FT.	STA.	REMARKS	SQ. FT.
2+77	STOP LINE @ GORGAS ST.	24	2+77	STOP LINE @ GORGAS ST.	24
5+91	STOP LINE @ JACKSON ST.	24	5+91	STOP LINE @ JACKSON ST.	24

BEGIN PROJECT  
AND WORK  
STA. 0+00



END PROJECT  
AND WORK  
STA. 26+93

SITE 12			
ROBINSON RD. (FROM THE ALEXANDER CITY LIMITS TO US 280)			
ITEM NO.	PLAN QUANTITY	UNIT	DESCRIPTION
1	5984	SY	BITUMINOUS TREATMENT G
3	494	TONS	SUPERPAVE BITUMINOUS CONCRETE WEARING SURFACE LAYER (165 LB/SY)
6	40	TONS	SUPERPAVE BITUMINOUS CONCRETE UPPER BINDER LAYER, LEVELING
11	24	SF	TRAFFIC CONTROL MARKINGS, CLASS 2, TYPE A
12	24	SF	TEMPORARY TRAFFIC CONTROL MARKINGS

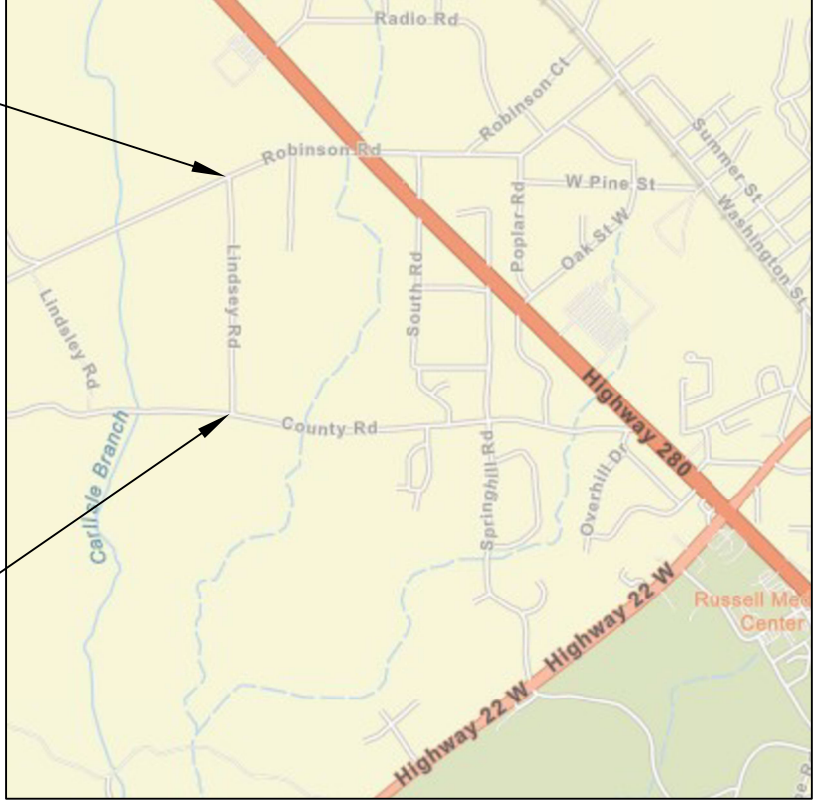
TRAFFIC CONTROL MARKINGS, CLASS 2, TYPE A			TEMPORARY TRAFFIC CONTROL MARKINGS		
STA.	REMARKS	SQ. FT.	STA.	REMARKS	SQ. FT.
20+62	STOP LINE @ ENNIS BERRY LN.	24	20+62	STOP LINE @ ENNIS BERRY LN.	24

# SITE DETAIL SHEET (13-14)

PROJECT REFERENCE	FISCAL YEAR	SHEET NO	LAST SHEET
ACRIP RESURFACING	2024	10	19

END PROJECT  
AND WORK  
STA. 31+00

BEGIN PROJECT  
AND WORK  
STA. 0+00



SITE 13			
LINDSEY RD. (FROM COUNTY RD. TO ROBINSON RD.)			
ITEM NO.	PLAN QUANTITY	UNIT	DESCRIPTION
1	6889	SY	BITUMINOUS TREATMENT G
3	568	TONS	SUPERPAVE BITUMINOUS CONCRETE WEARING SURFACE LAYER (165 LB/SY)
6	20	TONS	SUPERPAVE BITUMINOUS CONCRETE UPPER BINDER LAYER, LEVELING
11	48	SF	TRAFFIC CONTROL MARKINGS, CLASS 2, TYPE A
12	48	SF	TEMPORARY TRAFFIC CONTROL MARKINGS

TRAFFIC CONTROL MARKINGS, CLASS 2, TYPE A			TEMPORARY TRAFFIC CONTROL MARKINGS		
STA.	REMARKS	SQ. FT.	STA.	REMARKS	SQ. FT.
0+00	STOP LINE @ COUNTY RD.	24	0+00	STOP LINE @ COUNTY RD.	24
31+00	STOP LINE @ ROBINSON RD.	24	31+00	STOP LINE @ ROBINSON RD.	24

END PROJECT  
AND WORK  
STA. 28+96

BEGIN PROJECT  
AND WORK  
STA. 0+00



SITE 14			
SOUTH ROAD (FROM COUNTY ROAD TO US 280)			
ITEM NO.	PLAN QUANTITY	UNIT	DESCRIPTION
2	7079	SY	PLANING EXISTING PAVEMENT (APPROXIMATELY 1.10" THRU 2.0" THICK)
3	584	TONS	SUPERPAVE BITUMINOUS CONCRETE WEARING SURFACE LAYER (165 LB/SY)
6	40	TONS	SUPERPAVE BITUMINOUS CONCRETE UPPER BINDER LAYER, LEVELING
11	78	SF	TRAFFIC CONTROL MARKINGS, CLASS 2, TYPE A
12	72	SF	TEMPORARY TRAFFIC CONTROL MARKINGS

TRAFFIC CONTROL MARKINGS, CLASS 2, TYPE A			TEMPORARY TRAFFIC CONTROL MARKINGS		
STA.	REMARKS	SQ. FT.	STA.	REMARKS	SQ. FT.
0+00	STOP LINE @ COUNTY RD.	24	0+00	STOP LINE @ COUNTY RD.	24
9+24	STOP LINE @ DAYWELL ST.	30	9+24	STOP LINE @ DAYWELL ST.	24
20+32	STOP LINE @ SAM ST.	24	20+32	STOP LINE @ SAM ST.	24

# SITE DETAIL SHEET (15-16)

PROJECT REFERENCE	FISCAL YEAR	SHEET NO	LAST SHEET
ACRIP RESURFACING	2024	11	19



BEGIN PROJECT  
AND WORK  
STA. 0+00

SITE 15			
DAYWELL ST. (FROM SOUTH RD. TO SPRINGHILL ST.)			
ITEM NO.	PLAN QUANTITY	UNIT	DESCRIPTION
2	2272	SY	PLANING EXISTING PAVEMENT (APPROXIMATELY 1.10" THRU 2.0" THICK)
3	187	TONS	SUPERPAVE BITUMINOUS CONCRETE WEARING SURFACE LAYER (165 LB/SY)
6	20	TONS	SUPERPAVE BITUMINOUS CONCRETE UPPER BINDER LAYER, LEVELING
11	28	SF	TRAFFIC CONTROL MARKINGS, CLASS 2, TYPE A
12	24	SF	TEMPORARY TRAFFIC CONTROL MARKINGS

TRAFFIC CONTROL MARKINGS, CLASS 2, TYPE A			TEMPORARY TRAFFIC CONTROL MARKINGS		
STA.	REMARKS	SQ. FT.	STA.	REMARKS	SQ. FT.
8+89	STOP LINE @ SPRINGHILL ST.	28	8+89	STOP LINE @ SPRINGHILL ST.	24

END PROJECT  
AND WORK  
STA. 8+89



END PROJECT  
AND WORK  
STA. 2+90

BEGIN PROJECT  
AND WORK  
STA. 0+00

SITE 16			
SOUTH ROAD CT. (FROM SOUTH RD. TO CUL-DE-SAC)			
ITEM NO.	PLAN QUANTITY	UNIT	DESCRIPTION
2	1022	SY	PLANING EXISTING PAVEMENT (APPROXIMATELY 1.10" THRU 2.0" THICK)
3	84	TONS	SUPERPAVE BITUMINOUS CONCRETE WEARING SURFACE LAYER (165 LB/SY)

# SITE DETAIL SHEET (17-18)

PROJECT REFERENCE	FISCAL YEAR	SHEET NO	LAST SHEET
ACRIP RESURFACING	2024	12	19



BEGIN PROJECT AND WORK STA. 0+00

SITE 17			
THOMAS ST. (FROM COUNTY RD. TO DEAD END)			
ITEM NO.	PLAN QUANTITY	UNIT	DESCRIPTION
2	2136	SY	PLANING EXISTING PAVEMENT (APPROXIMATELY 1.10" THRU 2.0" THICK)
3	176	TONS	SUPERPAVE BITUMINOUS CONCRETE WEARING SURFACE LAYER (165 LB/SY)
6	0	TONS	SUPERPAVE BITUMINOUS CONCRETE UPPER BINDER LAYER, LEVELING
11	34	SF	TRAFFIC CONTROL MARKINGS, CLASS 2, TYPE A
12	24	SF	TEMPORARY TRAFFIC CONTROL MARKINGS

TRAFFIC CONTROL MARKINGS, CLASS 2, TYPE A			TEMPORARY TRAFFIC CONTROL MARKINGS		
STA.	REMARKS	SQ. FT.	STA.	REMARKS	SQ. FT.
0+00	STOP LINE @ COUNTY RD.	34	0+00	STOP LINE @ COUNTY RD.	24

END PROJECT AND WORK STA. 8+74



END PROJECT AND WORK STA. 2+90

SITE 18			
CELIA CIR (FROM SMITH ST. TO THOMAS ST.)			
ITEM NO.	PLAN QUANTITY	UNIT	DESCRIPTION
2	1753	SY	PLANING EXISTING PAVEMENT (APPROXIMATELY 1.10" THRU 2.0" THICK)
3	145	TONS	SUPERPAVE BITUMINOUS CONCRETE WEARING SURFACE LAYER (165 LB/SY)
6	0	TONS	SUPERPAVE BITUMINOUS CONCRETE UPPER BINDER LAYER, LEVELING
11	48	SF	TRAFFIC CONTROL MARKINGS, CLASS 2, TYPE A
12	48	SF	TEMPORARY TRAFFIC CONTROL MARKINGS

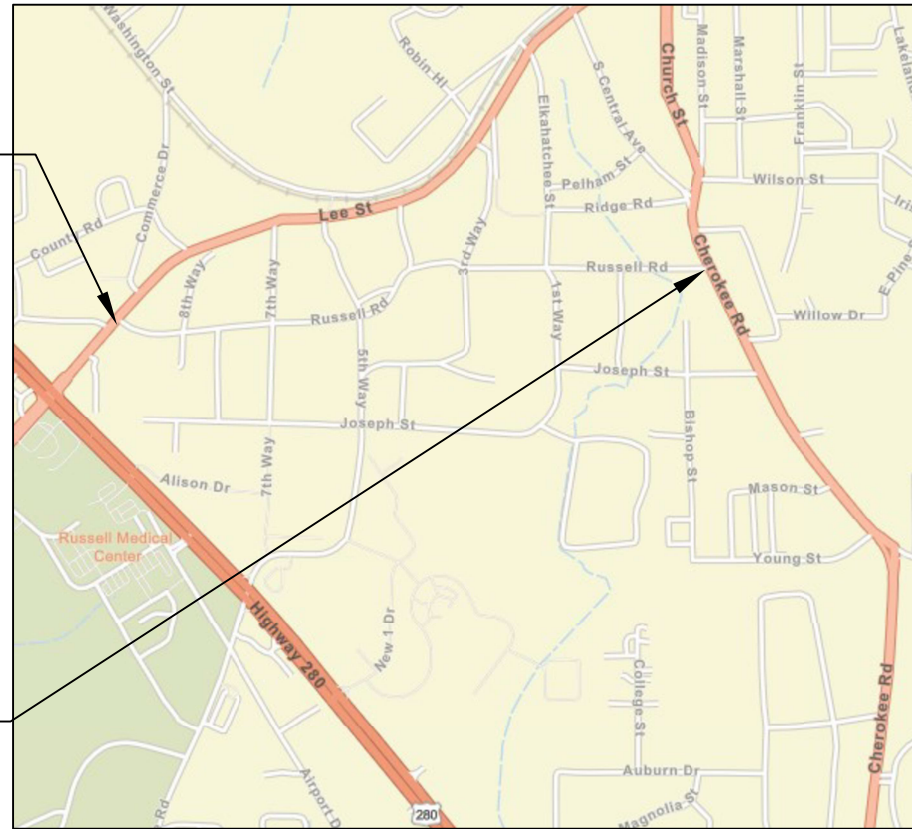
TRAFFIC CONTROL MARKINGS, CLASS 2, TYPE A			TEMPORARY TRAFFIC CONTROL MARKINGS		
STA.	REMARKS	SQ. FT.	STA.	REMARKS	SQ. FT.
0+00	STOP LINE @ SMITH ST.	24	0+00	STOP LINE @ COUNTY RD.	24
2+90	STOP LINE @ THOMAS ST.	24	9+24	STOP LINE @ DAYWELL ST.	24

BEGIN PROJECT AND WORK STA. 0+00

# SITE DETAIL SHEET (19-20)

PROJECT REFERENCE	FISCAL YEAR	SHEET NO	LAST SHEET
ACRIP RESURFACING	2024	13	19

BEGIN PROJECT  
AND WORK  
STA. 0+00

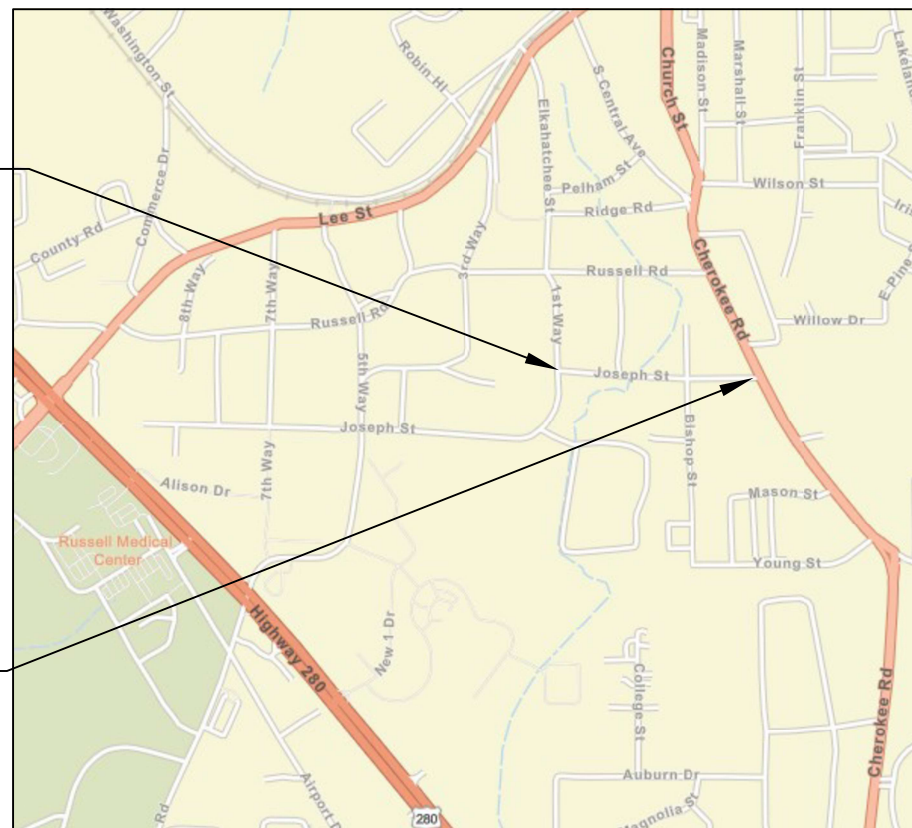


END PROJECT  
AND WORK  
STA. 52+56

SITE 19			
RUSSELL RD. (FROM LEE ST. TO CHEROKEE RD.)			
ITEM NO.	PLAN QUANTITY	UNIT	DESCRIPTION
1	12848	SY	BITUMINOUS TREATMENT G
4	642	TONS	SUPERPAVE BITUMINOUS CONCRETE WEARING LAYER, THIN LIFT MIX
6	180	TONS	SUPERPAVE BITUMINOUS CONCRETE UPPER BINDER LAYER, LEVELING
8	1.98	MILE	SOLID YELLOW, CLASS 2, TYPE A TRAFFIC STRIPE
10	1.98	MILE	SOLID TEMPORARY TRAFFIC STRIPE
11	184	SF	TRAFFIC CONTROL MARKINGS, CLASS 2, TYPE A
12	96	SF	TEMPORARY TRAFFIC CONTROL MARKINGS

TRAFFIC CONTROL MARKINGS, CLASS 2, TYPE A			TEMPORARY TRAFFIC CONTROL MARKINGS		
STA.	REMARKS	SQ. FT.	STA.	REMARKS	SQ. FT.
20+50	STOP LINE @ CENTRAL BLVD. LEFT	56	20+50	STOP LINE @ CENTRAL BLVD. LEFT	24
20+50	STOP LINE @ CENTRAL BLVD. RIGHT	44	20+50	STOP LINE @ CENTRAL BLVD. RIGHT	24
39+50	STOP LINE @ ELKAHATCHEE ST. LEFT	44	39+50	STOP LINE @ ELKAHATCHEE ST. LEFT	24
39+50	STOP LINE @ ELKAHATCHEE ST. RIGHT	40	39+50	STOP LINE @ ELKAHATCHEE ST. RIGHT	24

BEGIN PROJECT  
AND WORK  
STA. 0+00



END PROJECT  
AND WORK  
STA. 17+32

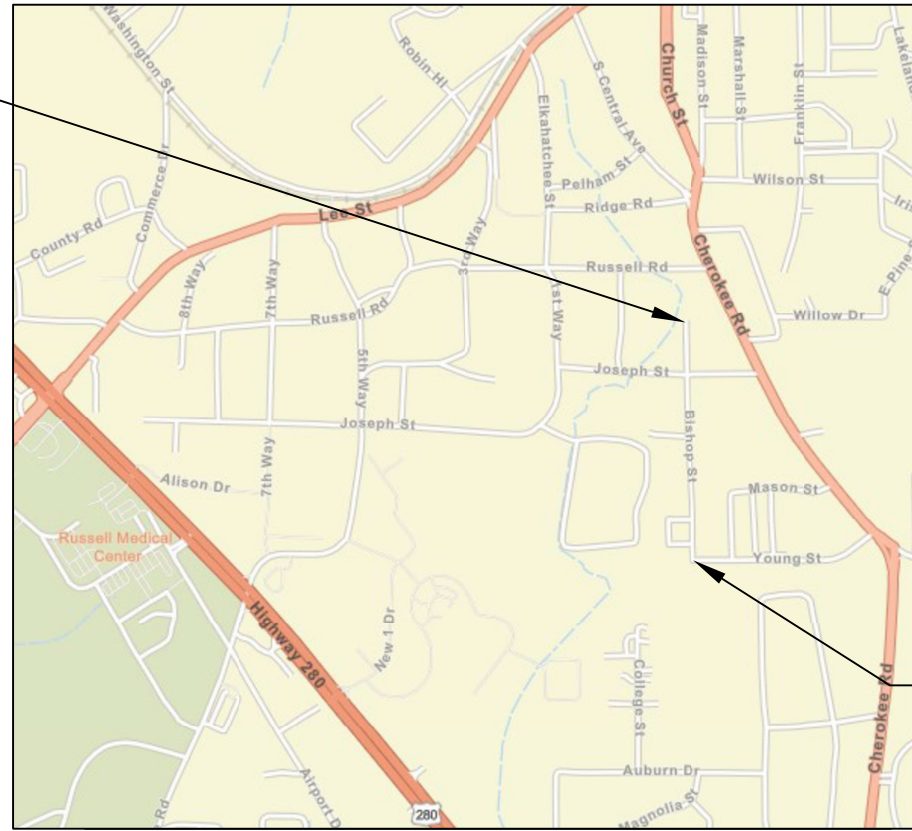
SITE 20			
JOSEPH ST. (FROM ELKAHATCHEE ST. TO CHEROKEE RD.)			
ITEM NO.	PLAN QUANTITY	UNIT	DESCRIPTION
1	4619	SY	BITUMINOUS TREATMENT G
3	381	TONS	SUPERPAVE BITUMINOUS CONCRETE WEARING SURFACE LAYER (165 LB/SY)
6	80	TONS	SUPERPAVE BITUMINOUS CONCRETE UPPER BINDER LAYER, LEVELING
8	0.65	MILE	SOLID YELLOW, CLASS 2, TYPE A TRAFFIC STRIPE
10	0.65	MILE	SOLID TEMPORARY TRAFFIC STRIPE
11	100	SF	TRAFFIC CONTROL MARKINGS, CLASS 2, TYPE A
12	96	SF	TEMPORARY TRAFFIC CONTROL MARKINGS

TRAFFIC CONTROL MARKINGS, CLASS 2, TYPE A			TEMPORARY TRAFFIC CONTROL MARKINGS		
STA.	REMARKS	SQ. FT.	STA.	REMARKS	SQ. FT.
0+00	STOP LINE @ ELKAHATCHEE ST.	26	0+00	STOP LINE @ ELKAHATCHEE ST.	24
11+25	STOP LINE @ BISHOP ST. LEFT	24	11+25	STOP LINE @ BISHOP ST. LEFT	24
11+25	STOP LINE @ BISHOP ST. RIGHT	24	11+25	STOP LINE @ BISHOP ST. RIGHT	24
17+32	STOP LINE @ CHEROKEE RD	26	17+32	STOP LINE @ CHEROKEE RD	24

# SITE DETAIL SHEET (21-22)

PROJECT REFERENCE	FISCAL YEAR	SHEET NO	LAST SHEET
ACRIP RESURFACING	2024	14	19

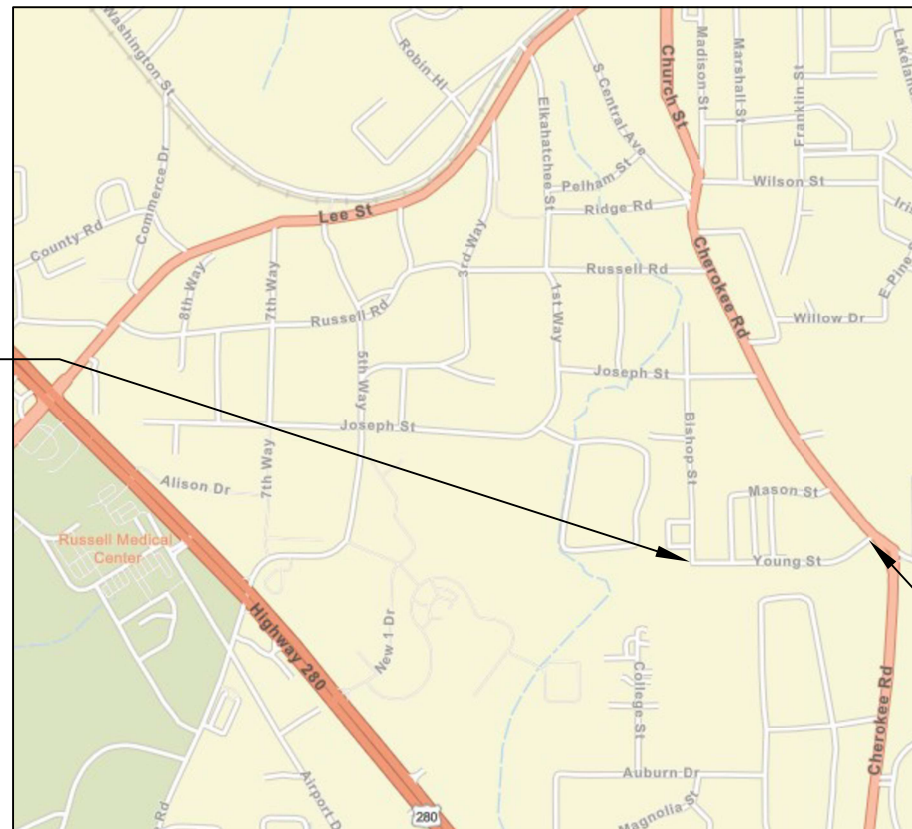
END PROJECT  
AND WORK  
STA. 18+95



BEGIN PROJECT  
AND WORK  
STA. 0+00

SITE 21			
BISHOP ST. (FROM YOUNG ST. TO DEAD END)			
ITEM NO.	PLAN QUANTITY	UNIT	DESCRIPTION
3	417	TONS	SUPERPAVE BITUMINOUS CONCRETE WEARING SURFACE LAYER (165 LB/SY)
6	0	TONS	SUPERPAVE BITUMINOUS CONCRETE UPPER BINDER LAYER, LEVELING

BEGIN PROJECT  
AND WORK  
STA. 0+00



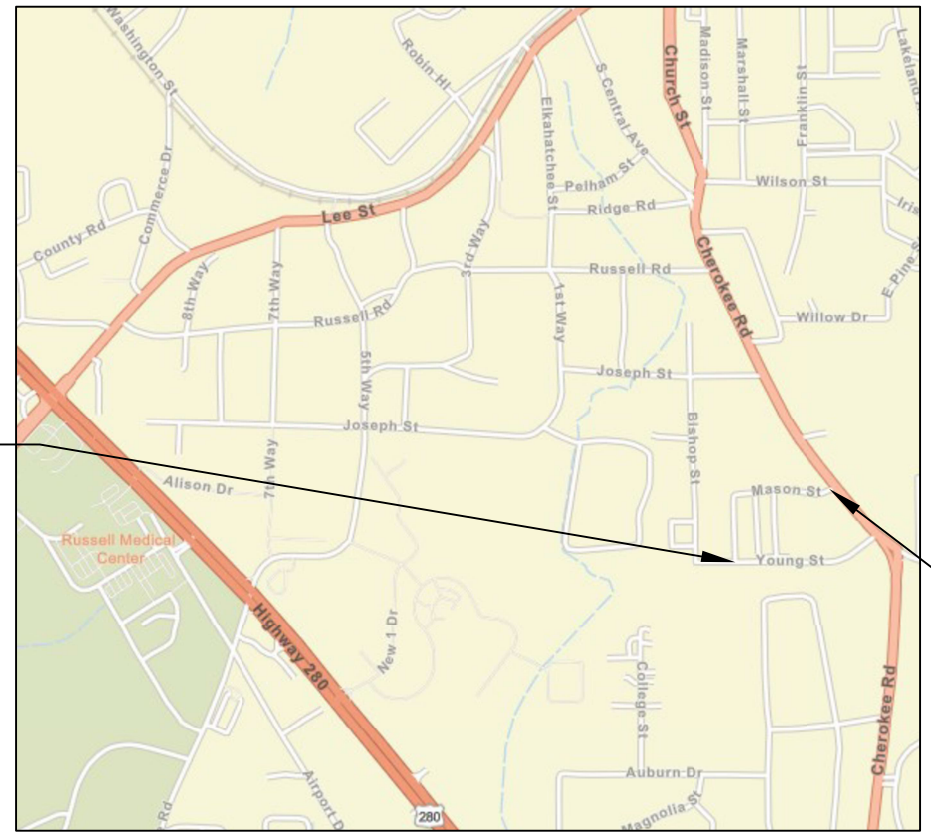
END PROJECT  
AND WORK  
STA. 16+14

SITE 22			
YOUNG ST. (FROM BISHOP ST. TO CHEROKEE RD.)			
ITEM NO.	PLAN QUANTITY	UNIT	DESCRIPTION
3	414	TONS	SUPERPAVE BITUMINOUS CONCRETE WEARING SURFACE LAYER (165 LB/SY)
6	0	TONS	SUPERPAVE BITUMINOUS CONCRETE UPPER BINDER LAYER, LEVELING
11	24	SF	TRAFFIC CONTROL MARKINGS, CLASS 2, TYPE A
12	24	SF	TEMPORARY TRAFFIC CONTROL MARKINGS

TRAFFIC CONTROL MARKINGS, CLASS 2, TYPE A			TEMPORARY TRAFFIC CONTROL MARKINGS		
STA.	REMARKS	SQ. FT.	STA.	REMARKS	SQ. FT.
3+35	STOP LINE @ MYRTLE ST.	24	3+35	STOP LINE @ MYRTLE ST.	24

# SITE DETAIL SHEET (23-24)

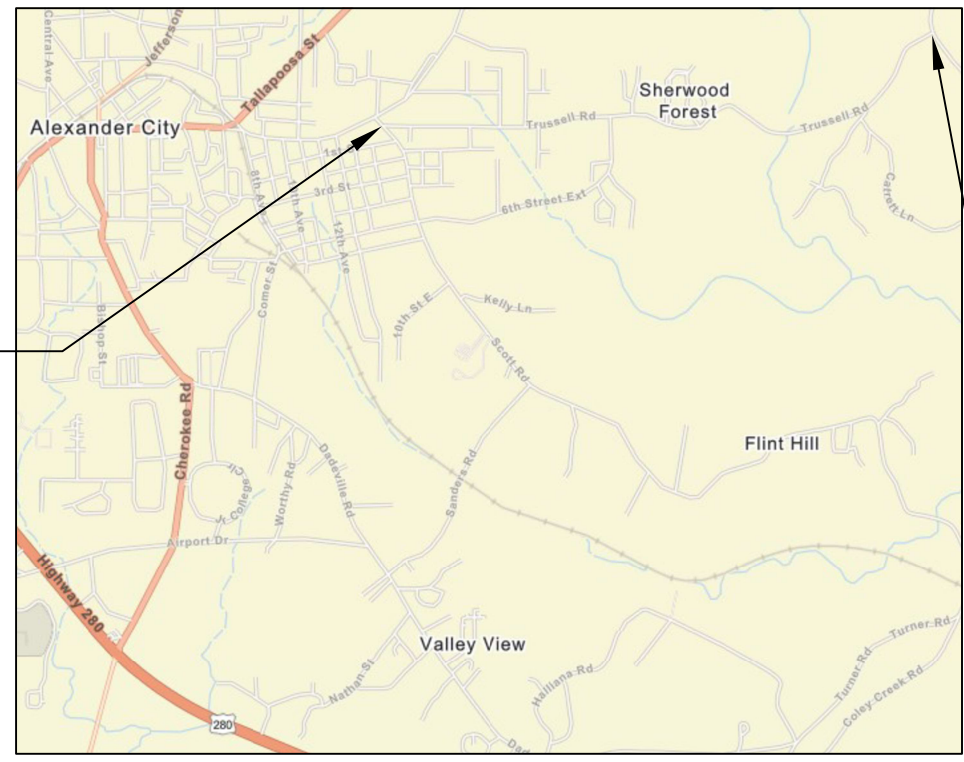
PROJECT REFERENCE	FISCAL YEAR	SHEET NO	LAST SHEET
ACRIP RESURFACING	2024	15	19



BEGIN PROJECT AND WORK STA. 0+00

END PROJECT AND WORK STA. 14+84

SITE 23			
MASON ST./MYRTLE ST (FROM YOUNG ST. TO CHEROKEE RD.)			
ITEM NO.	PLAN QUANTITY	UNIT	DESCRIPTION
1	4287	SY	BITUMINOUS TREATMENT G
3	354	TONS	SUPERPAVE BITUMINOUS CONCRETE WEARING SURFACE LAYER (165 LB/SY)
6	0	TONS	SUPERPAVE BITUMINOUS CONCRETE UPPER BINDER LAYER, LEVELING



BEGIN PROJECT AND WORK STA. 0+00

END PROJECT AND WORK STA. 120+38

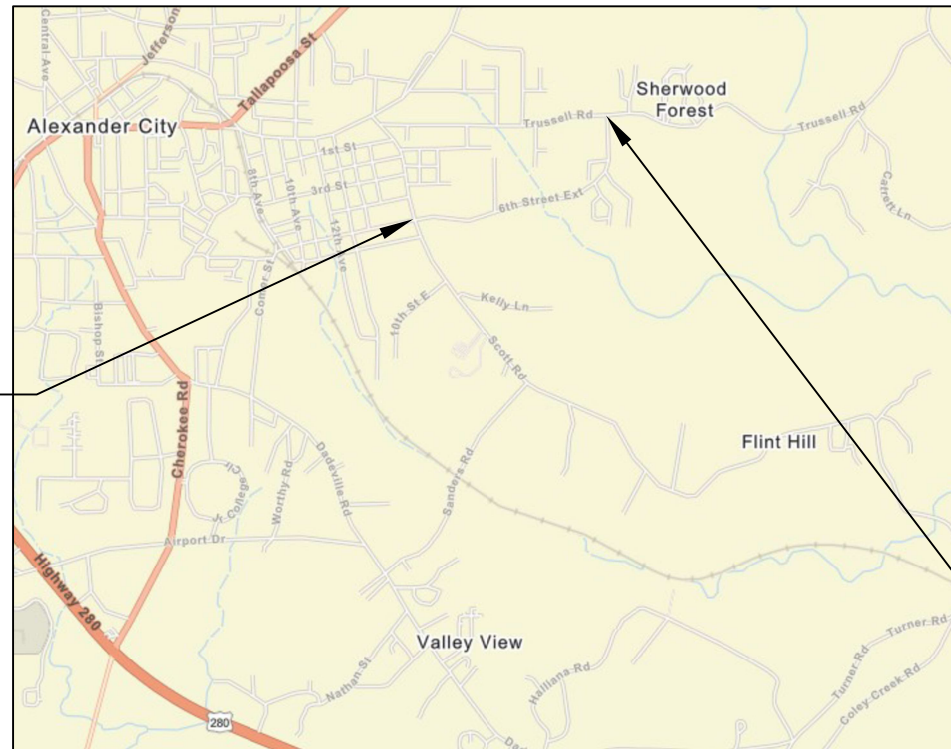
SITE 24			
TRUSSELL RD. (FROM SCOTT RD. TO COLEY CREEK RD.)			
ITEM NO.	PLAN QUANTITY	UNIT	DESCRIPTION
1	29426	SY	BITUMINOUS TREATMENT G
4	1471	TONS	SUPERPAVE BITUMINOUS CONCRETE WEARING LAYER, THIN LIFT MIX
6	80	TONS	SUPERPAVE BITUMINOUS CONCRETE UPPER BINDER LAYER, LEVELING
8	4.56	MILE	SOLID YELLOW, CLASS 2, TYPE A TRAFFIC STRIPE
10	4.56	MILE	SOLID TEMPORARY TRAFFIC STRIPE
11	210	SF	TRAFFIC CONTROL MARKINGS, CLASS 2, TYPE A
12	168	SF	TEMPORARY TRAFFIC CONTROL MARKINGS

TRAFFIC CONTROL MARKINGS, CLASS 2, TYPE A			TEMPORARY TRAFFIC CONTROL MARKINGS		
STA.	REMARKS	SQ. FT.	STA.	REMARKS	SQ. FT.
16+55	STOP LINE @ MURPHY ST.	32	16+55	STOP LINE @ MURPHY ST.	24
22+52	STOP LINE @ FLORENCE AVE.	24	22+52	STOP LINE @ FLORENCE AVE.	24
48+87	STOP LINE @ KNOLLWOOD DR.	24	48+87	STOP LINE @ KNOLLWOOD DR.	24
55+97	STOP LINE @ ROBINHOOD DR.	30	55+97	STOP LINE @ ROBINHOOD DR.	24
57+02	STOP LINE @ ROBINHOOD DR.	36	57+02	STOP LINE @ ROBINHOOD DR.	24
62+83	STOP LINE @ LITTLE JOHN ST.	24	62+83	STOP LINE @ LITTLE JOHN ST.	24
100+32	STOP LINE @ THOMAS RIDGE RD.	40	100+32	STOP LINE @ THOMAS RIDGE RD.	24

# SITE DETAIL SHEET (25-26)

PROJECT REFERENCE	FISCAL YEAR	SHEET NO	LAST SHEET
ACRIP RESURFACING	2024	16	19

BEGIN PROJECT  
AND WORK  
STA. 0+00

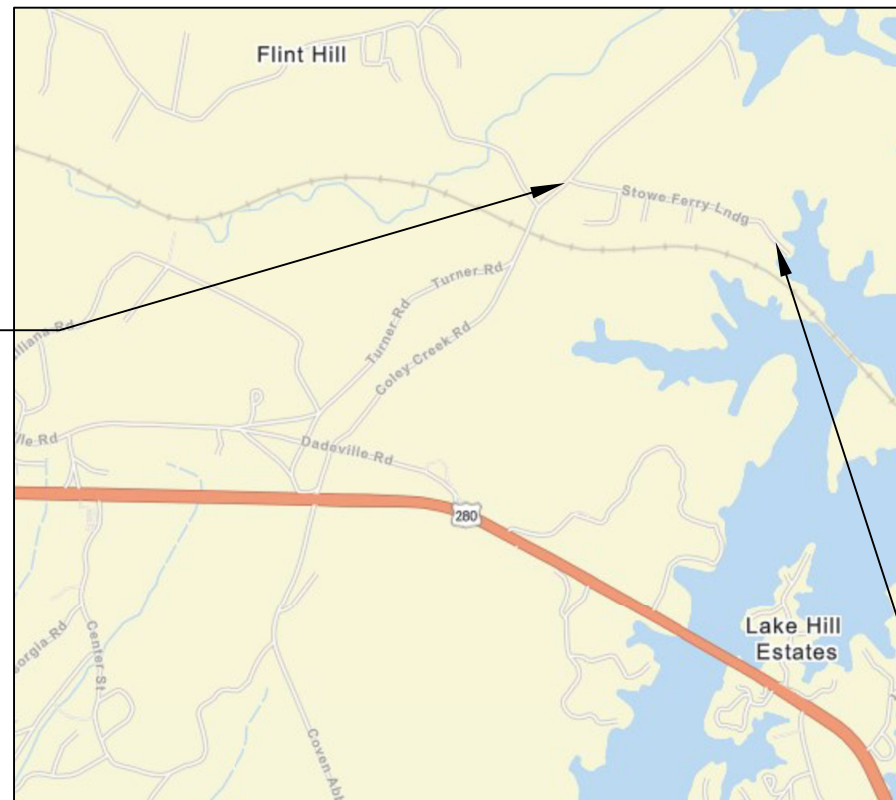


SITE 25			
6TH ST. EXTENSION (FROM SCOTT RD. TO TRUSSELL RD.)			
ITEM NO.	PLAN QUANTITY	UNIT	DESCRIPTION
1	12547	SY	BITUMINOUS TREATMENT G
3	1035	TONS	SUPERPAVE BITUMINOUS CONCRETE WEARING SURFACE LAYER (165 LB/SY)
6	0	TONS	SUPERPAVE BITUMINOUS CONCRETE UPPER BINDER LAYER, LEVELING
11	94	SF	TRAFFIC CONTROL MARKINGS, CLASS 2, TYPE A
12	72	SF	TEMPORARY TRAFFIC CONTROL MARKINGS

TRAFFIC CONTROL MARKINGS, CLASS 2, TYPE A			TEMPORARY TRAFFIC CONTROL MARKINGS		
STA.	REMARKS	SQ. FT.	STA.	REMARKS	SQ. FT.
36+72	STOP LINE @ PEARL DR.	24	36+72	STOP LINE @ PEARL DR.	24
39+82	STOP LINE @ YOUNG RD.	24	39+82	STOP LINE @ YOUNG RD.	24
51+33	STOP LINE @ TRUSSELL RD.	46	51+33	STOP LINE @ TRUSSELL RD.	24

END PROJECT  
AND WORK  
STA. 51+33

BEGIN PROJECT  
AND WORK  
STA. 0+00



SITE 26			
STOWE FERRY LANDING (FROM COLEY CREEK RD TO DEAD END)			
ITEM NO.	PLAN QUANTITY	UNIT	DESCRIPTION
1	9362	SY	BITUMINOUS TREATMENT G
4	468	TONS	SUPERPAVE BITUMINOUS CONCRETE WEARING LAYER, THIN LIFT MIX
6	0	TONS	SUPERPAVE BITUMINOUS CONCRETE UPPER BINDER LAYER, LEVELING
8	1.45	MILE	SOLID YELLOW, CLASS 2, TYPE A TRAFFIC STRIPE
10	1.45	MILE	SOLID TEMPORARY TRAFFIC STRIPE
11	72	SF	TRAFFIC CONTROL MARKINGS, CLASS 2, TYPE A
12	72	SF	TEMPORARY TRAFFIC CONTROL MARKINGS

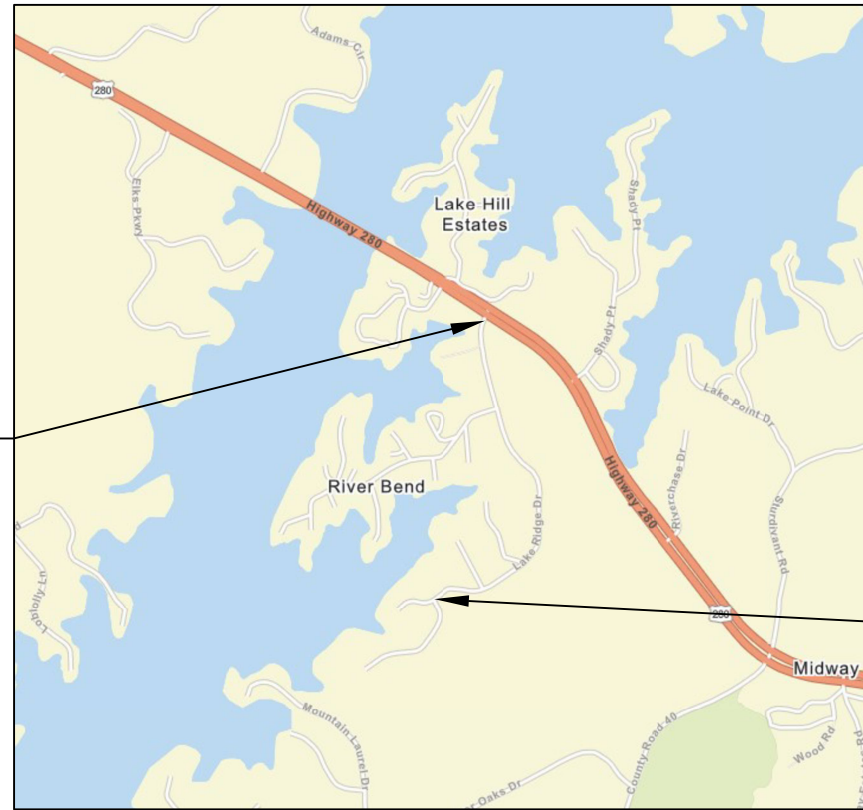
TRAFFIC CONTROL MARKINGS, CLASS 2, TYPE A			TEMPORARY TRAFFIC CONTROL MARKINGS		
STA.	REMARKS	SQ. FT.	STA.	REMARKS	SQ. FT.
8+18	STOP LINE @ THOMAS LN.	24	8+18	STOP LINE @ THOMAS LN.	24
12+60	STOP LINE @ LANDING TRL.	24	12+60	STOP LINE @ LANDING TRL.	24
20+08	STOP LINE @ BETTIE PATH	24	20+08	STOP LINE @ BETTIE PATH	24

END PROJECT  
AND WORK  
STA. 38+30



# SITE DETAIL SHEET (27-28)

PROJECT REFERENCE	FISCAL YEAR	SHEET NO	LAST SHEET
ACRIP RESURFACING	2024	17	19

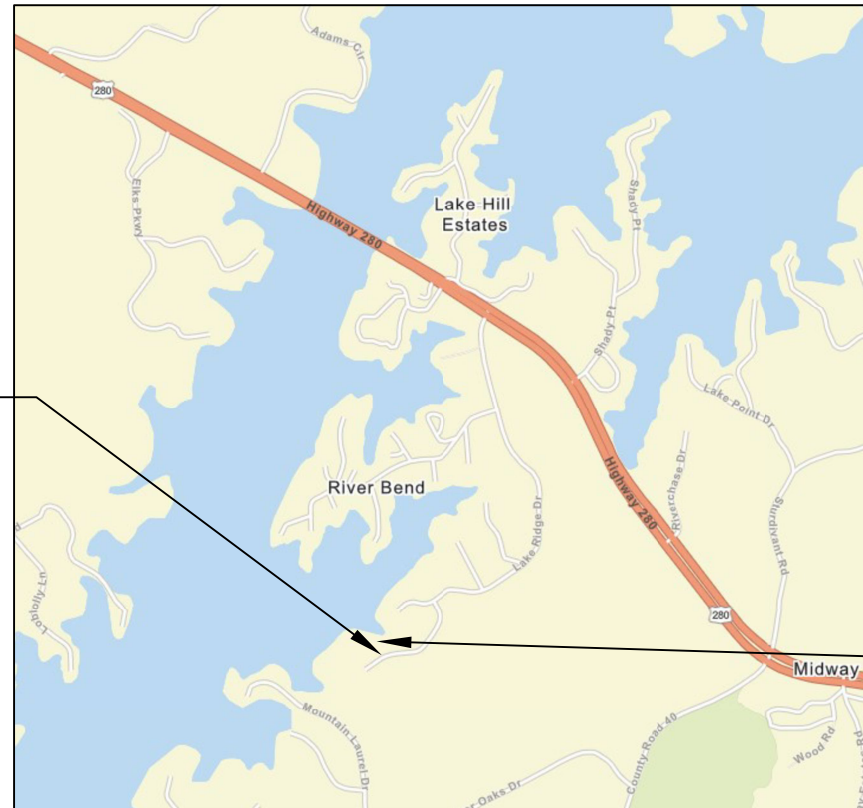


BEGIN PROJECT  
AND WORK  
STA. 0+00

END PROJECT  
AND WORK  
STA. 45+51

SITE 27			
LAKE RIDGE DR. (FROM US 280 TO SHADY RIDGE CIR.)			
ITEM NO.	PLAN QUANTITY	UNIT	DESCRIPTION
3	918	TONS	SUPERPAVE BITUMINOUS CONCRETE WEARING SURFACE LAYER (165 LB/SY)
6	20	TONS	SUPERPAVE BITUMINOUS CONCRETE UPPER BINDER LAYER, LEVELING
11	30	SF	TRAFFIC CONTROL MARKINGS, CLASS 2, TYPE A
12	24	SF	TEMPORARY TRAFFIC CONTROL MARKINGS

TRAFFIC CONTROL MARKINGS, CLASS 2, TYPE A			TEMPORARY TRAFFIC CONTROL MARKINGS		
STA.	REMARKS	SQ. FT.	STA.	REMARKS	SQ. FT.
9+92	STOP LINE @ RIVER RUN	30	9+92	STOP LINE @ RIVER RUN	24



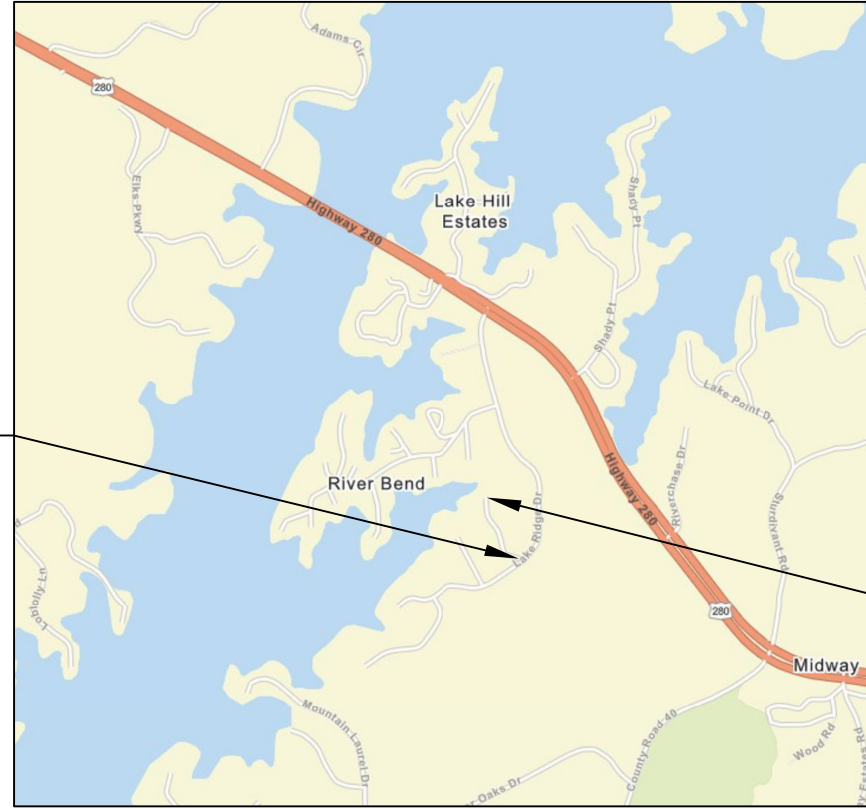
BEGIN PROJECT  
AND WORK  
STA. 0+00

END PROJECT  
AND WORK  
STA. 1+70

SITE 28			
HICKORY LANE ( FROM LAKE RIDGE DR. TO CUL-DE-SAC)			
ITEM NO.	PLAN QUANTITY	UNIT	DESCRIPTION
3	46	TONS	SUPERPAVE BITUMINOUS CONCRETE WEARING SURFACE LAYER (165 LB/SY)
6	0	TONS	SUPERPAVE BITUMINOUS CONCRETE UPPER BINDER LAYER, LEVELING

# SITE DETAIL SHEET (29-30)

PROJECT REFERENCE	FISCAL YEAR	SHEET NO	LAST SHEET
ACRIP RESURFACING	2024	18	19



BEGIN PROJECT  
AND WORK  
STA. 0+00

END PROJECT  
AND WORK  
STA. 5+50

SITE 29			
BUENA VISTA CIR (FROM LAKE RIDGE DR. TO CUL-DE-SAC)			
ITEM NO.	PLAN QUANTITY	UNIT	DESCRIPTION
3	111	TONS	SUPERPAVE BITUMINOUS CONCRETE WEARING SURFACE LAYER (165 LB/SY)
6	0	TONS	SUPERPAVE BITUMINOUS CONCRETE UPPER BINDER LAYER, LEVELING



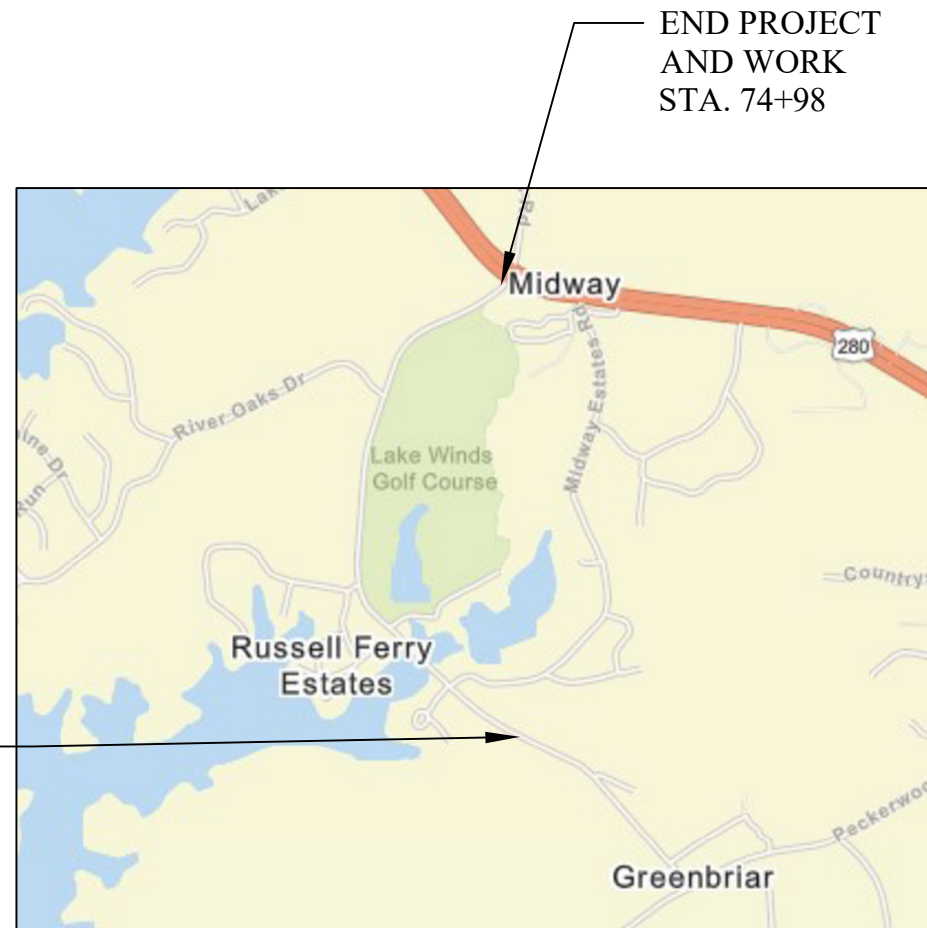
END PROJECT  
AND WORK  
STA. 27+64

BEGIN PROJECT  
AND WORK  
STA. 0+00

SITE 30			
RIVER RUN ( FROM LAKE RIDGE DR. TO CUL-DE-SAC)			
ITEM NO.	PLAN QUANTITY	UNIT	DESCRIPTION
3	557	TONS	SUPERPAVE BITUMINOUS CONCRETE WEARING SURFACE LAYER (165 LB/SY)
6	0	TONS	SUPERPAVE BITUMINOUS CONCRETE UPPER BINDER LAYER, LEVELING

# SITE DETAIL SHEET (31)

PROJECT REFERENCE	FISCAL YEAR	SHEET NO	LAST SHEET
ACRIP RESURFACING	2024	19	19



BEGIN PROJECT  
AND WORK  
STA. 0+00

END PROJECT  
AND WORK  
STA. 74+98

SITE 31			
CR 40 (FROM ALEXANDER CITY LIMITS TO US 280)			
ITEM NO.	PLAN QUANTITY	UNIT	DESCRIPTION
1	18328	SY	BITUMINOUS TREATMENT G
3	1512	TONS	SUPERPAVE BITUMINOUS CONCRETE WEARING SURFACE LAYER (165 LB/SY)
6	20	TONS	SUPERPAVE BITUMINOUS CONCRETE UPPER BINDER LAYER, LEVELING
8	2.84	MILE	SOLID YELLOW, CLASS 2, TYPE A TRAFFIC STRIPE
10	2.84	MILE	SOLID TEMPORARY TRAFFIC STRIPE
11	116	SF	TRAFFIC CONTROL MARKINGS, CLASS 2, TYPE A
12	96	SF	TEMPORARY TRAFFIC CONTROL MARKINGS

TRAFFIC CONTROL MARKINGS, CLASS 2, TYPE A			TEMPORARY TRAFFIC CONTROL MARKINGS		
STA.	REMARKS	SQ. FT.	STA.	REMARKS	SQ. FT.
2+20	STOP LINE @ MIDWAY ESTATES RD.	24	2+20	STOP LINE @ MIDWAY ESTATES RD.	24
2+20	STOP LINE @ DENNIS CREEK CIR.	24	2+20	STOP LINE @ DENNIS CREEK CIR.	24
13+45	STOP LINE @ FAIRWAY LN.	24	13+45	STOP LINE @ FAIRWAY LN.	24
42+53	STOP LINE @ RIVER OAKS DR.	44	42+53	STOP LINE @ RIVER OAKS DR.	24