

**THE CITY OF ALEXANDER CITY, ALABAMA
MULTI AGENCY WASTEWATER SOLUTION – PROJECT “B”
HIGHWAY 128 SEWER FORCE MAIN
BID #24-03
(SRF PROJECT CS010329-05)**

ADDENDUM NO. 1

TO: ALL PROSPECTIVE CONTRACTORS AND SUPPLIERS

The changes, modifications, clarifications and/or additions covered by and set forth in this **Addendum No. 1** shall become part and be incorporated in the Specifications, Contract Documents, Bid Documents, and Plans for the above referenced project. The Contractor shall include this Addendum as well as any previous and subsequent addenda that may be issued with his proposal Bid Documents as indicating his receipt and acceptance of its terms, requirements, and clarifications.

The Contractor shall also acknowledge receipt of this addendum on page **BD-18** of the Specifications-Contractual Documents.

BID DOCUMENTS:

BD-8 Please see revised page BD-8 that includes a revision to the *List of Material Suppliers and Equipment Manufacturers*

BD-19: Please see revised page BD-19 that includes a revision to the *Alabama Power Allowance for Electrical Service to Pump Station*.

STANDARD SPECIFICATIONS – ELECTRICAL:

S5-58: Surge Suppression Incorporated’s contact information has been updated to (256-797-5097)

CLARIFICATIONS:

Sheet 1 D8, D9, and D10 included on the Table of Contents on the Cover Sheet of the Plans does not apply to this plan set.

Sheet 9 Dimensions for Section “A” have been revised.

Sheet 9 Section “B” shown on the Plan has been included.

Sheet 10 The fused disconnect SPD shall have double lugs and be model number SDLA3N4E30X3-21

Sheet 10 The pump control SPD shall be model number CKLA3N4-LP-21

Sheet D7 Per the 2022 revision of the *Field Guide for Erosion and Sediment Control on Construction Sites in Alabama* the Hay Bale details have been replaced with Wattle Inlet Protection device details.

LIST OF MATERIAL SUPPLIERS AND EQUIPMENT MANUFACTURERS

The base Material Supplier or Equipment Manufacturer is listed in bold directly to the right of the type of material or equipment.

| Material or Equipment | Name of Supplier or Manufacturer |
|------------------------------|---|
| 1. _____ | Base: _____ |
| _____ | |
| 2. _____ | Base: _____ |
| _____ | |

The Bidder further certifies that if his bid is accepted, the base Material Suppliers and Equipment Manufacturers he has indicated herein will be awarded contracts for supply of their products unless deductive substitutes are provided as specified herein and approved by the Owner. The Bidder further certifies that deductive substitute Material Suppliers and Equipment Manufacturers he has properly indicated that are approved by the Owner will be awarded contracts for supply of their products.

Contractor _____

By _____

Date _____

| ITEM | QUANT | UNIT | DESCRIPTION | UNIT PRICE | TOTAL |
|------|-------|-------------|--|--------------------|--------------------|
| 11 | 50 | Linear Foot | Casing Under Driveways by Boring 14" X 0.25 Casing for 6" Carrier Pipe | \$ _____ | \$ _____ |
| 12 | 1 | Lump Sum | Lift Station Improvements | \$ _____ | \$ _____ |
| 13 | 1 | Lump Sum | Mobilization | \$ _____ | \$ _____ |
| 14 | 1 | Lump Sum | Electrical | \$ _____ | \$ _____ |
| 15 | 1 | Lump Sum | Alabama Power Allowance for Electrical Service to Pump Station | \$50,000.00 | \$50,000.00 |
| 16 | 10 | Ton | Crushed Stone, Extra | \$ _____ | \$ _____ |
| 17 | 1 | Lump Sum | Final Grading and Site Restoration | \$ _____ | \$ _____ |
| 18 | 1 | Lump Sum | Owner Directed Allowance for Extra Work | \$20,000.00 | \$20,000.00 |
| 19 | 1 | Lump Sum | Start-up and Use of Project Components | \$20,000.00 | \$20,000.00 |

TOTAL OF BASE BID \$ _____

ALTERNATE ADD TO BASE BID

Note: Only the difference in costs from the Base Bid shall be written in below.

| ITEM | QUANT | UNIT | DESCRIPTION | UNIT PRICE | TOTAL |
|------|-------|-------------|--|------------|----------|
| 1A | 8,160 | Linear Foot | 10" HDPE DR 11 - Station 0+00 to 81+60 - Highway 128 | \$ _____ | \$ _____ |

TOTAL OF BASE BID PLUS ALTERNATE ADDS \$ _____

ACCOUNTING OF SALES AND USE TAX SAVINGS

Pursuant to Alabama Law, (Alabama Act 2018-234), BIDDER accounts for the Sales and Use Tax savings which are NOT included in the Items of Work - Bid Schedule as follows:

9. IEEE Standard C62.72™ - 2007 - IEEE Guide for the Application of Surge-Protective Devices for Low-Voltage (1000 V or less) AC Power Circuits

4.0 MANUFACTURER QUALIFICATIONS

All surge suppression devices shall be manufactured by an ISO 9001-2008 certified company normally engaged in the design, development, and manufacture of such equipment, with at least 10 years of engineering experience in the design and manufacture of permanently connected SPD devices.

The surge suppressor manufacturer shall provide unlimited free replacement of the entire SPD for all inoperable SPD units during the warranty period.

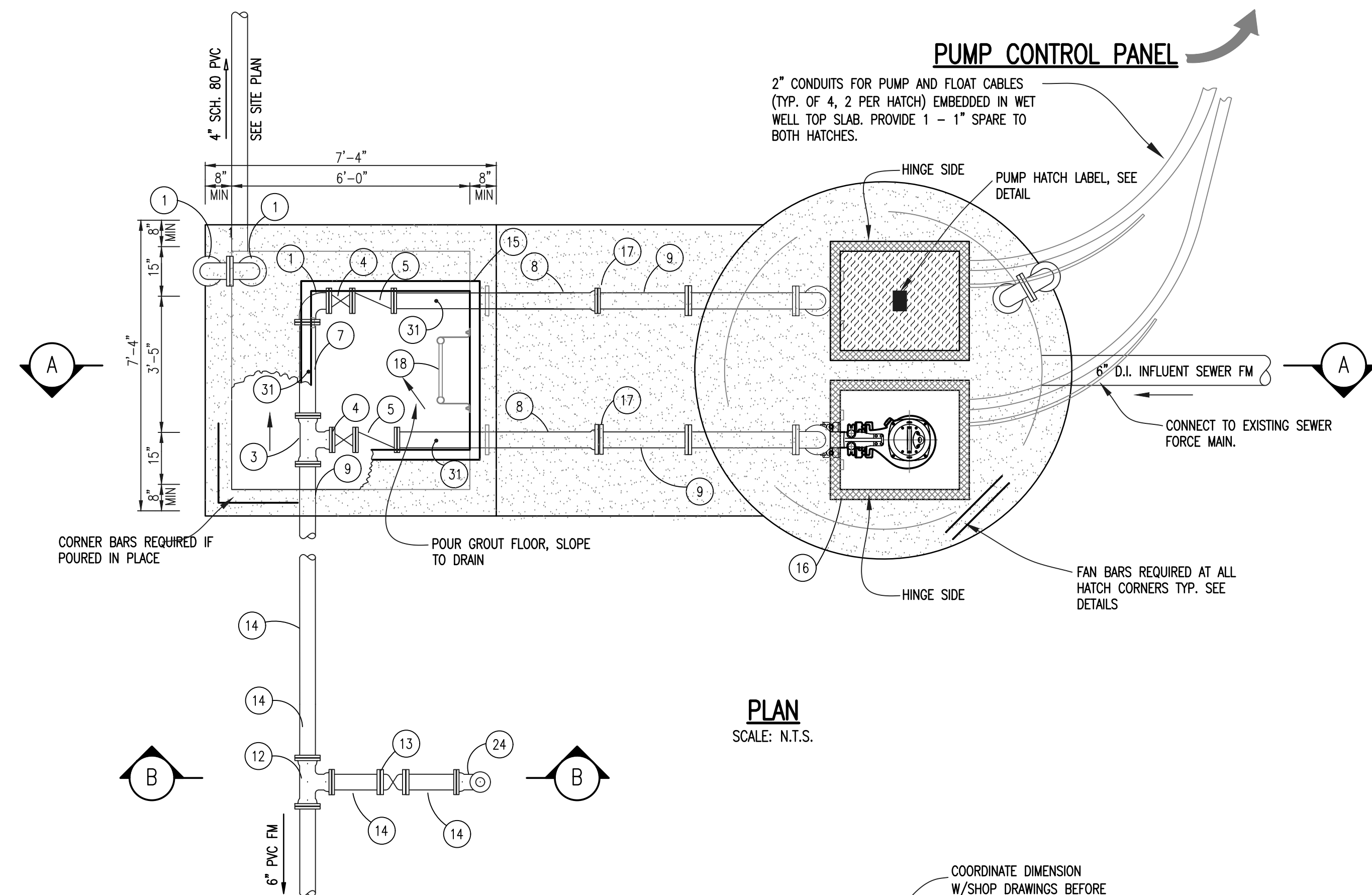
The listing of a manufacturer as “acceptable” does not imply automatic approval. It is the sole responsibility of the Contractor to ensure that any submittals made are for products that meet or exceed the specifications included herein. Subject to compliance with requirements, provide only products by the following manufacturers and models listed below:

- Surge Suppression Incorporated (Advantage Series (256-797-5097))
- Emerson (Liebert) Corporation (560xx16 and 570xx17 Series) / 614-888-0246, or
- CurrentTechnology (SL3 - 150 Series) / 800-238-5000.

5.0 SUBMITTALS

Surge suppression submittals shall include, but shall not be limited to the following items:

1. Complete schematic data for all suppressors indicating part numbers, conductor sizes, etc.
2. Dimensioned drawing of each suppressor type indicating mounting arrangement. Manufacturer’s ANSI/UL 1449-2006 Third Edition listing classification page and listing number(s).
3. Manufacturer’s UL 1283 listing classification page and listing number(s).
4. Certified test data documenting ANSI/IEEE C62.41-2002 performance and the ability of the device to meet or exceed all requirements of this specification. Include complete let-through voltage/measured limiting voltage test data (not Voltage Protection Rating), test graphs, and scope traces for each mode for each product submitted for Category’s C, B, A (including Cat A, 2 kV, 67 A, 100 kHz ring wave at both 90 and 270 degree electrical phase angles).
5. Letter from manufacturer stating products are in strict compliance with the recommendations of IEEE Standard 1100-2005, Clause 8.6.1 and incorporate 10 individual dedicated discrete modes of protection for three-phase Wye systems, including direct line-to-line components. (Reduced-mode variations will not be accepted).
6. Certificate of declaration that product is CE low voltage directive compliant.

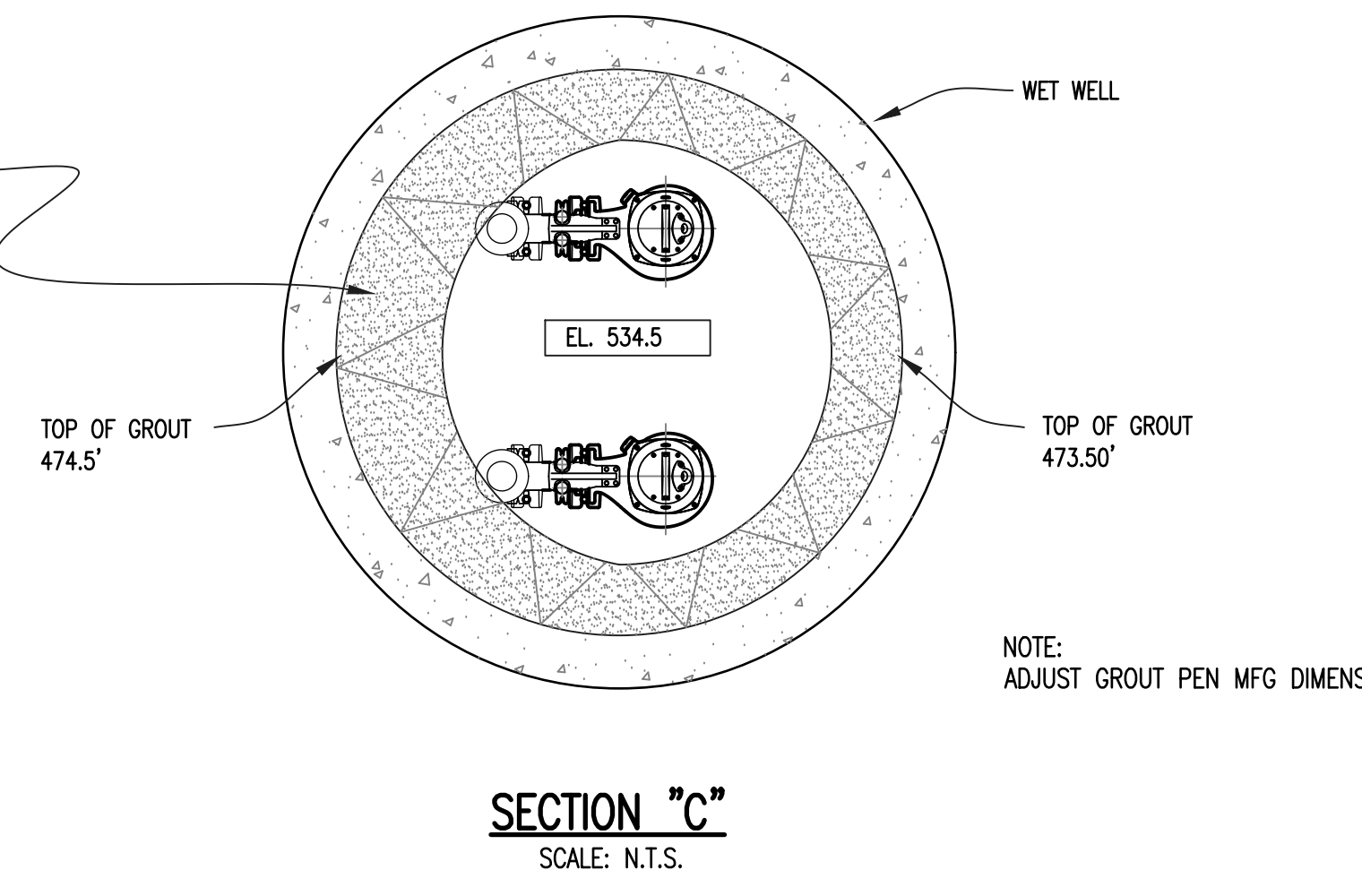
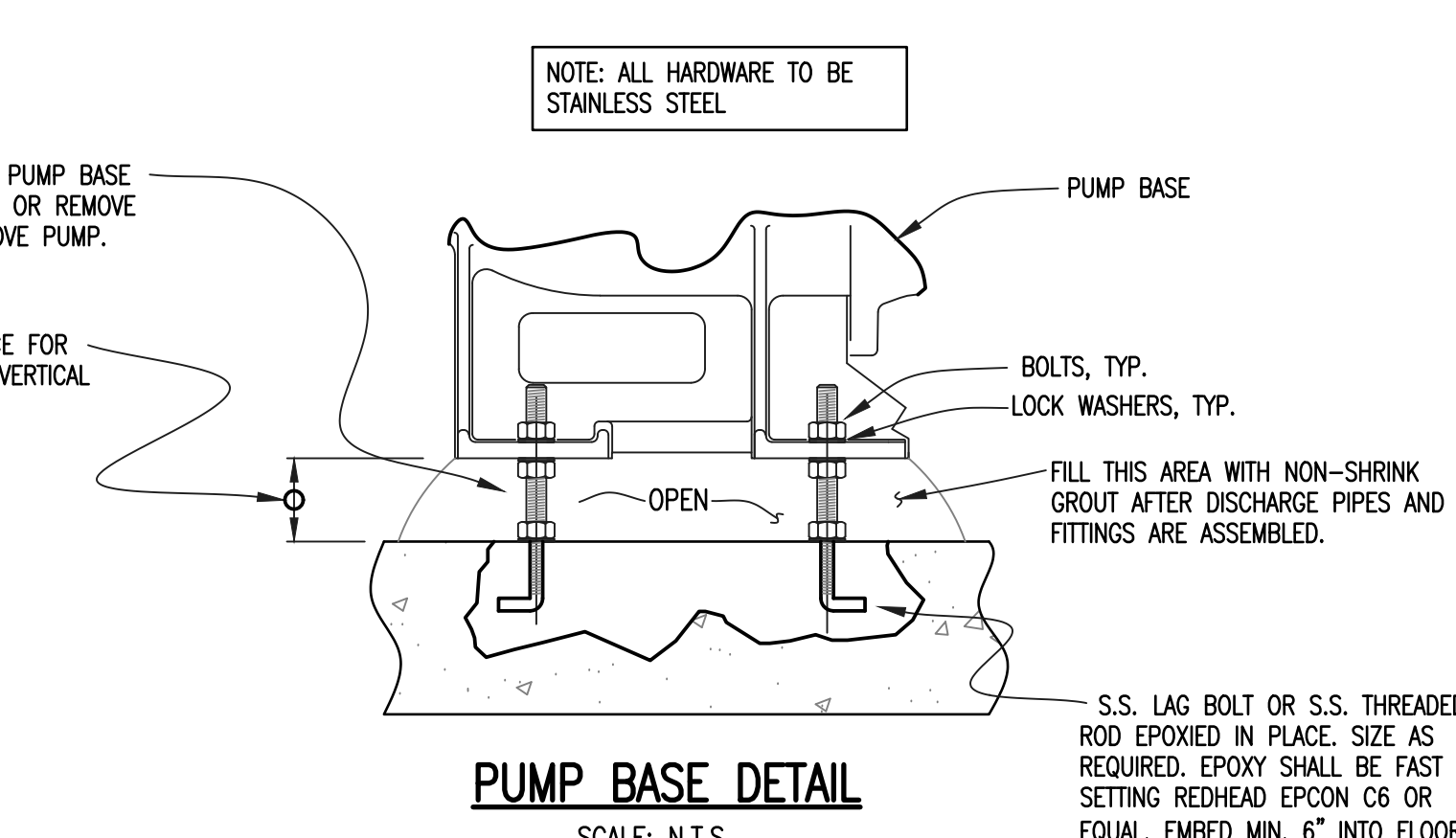
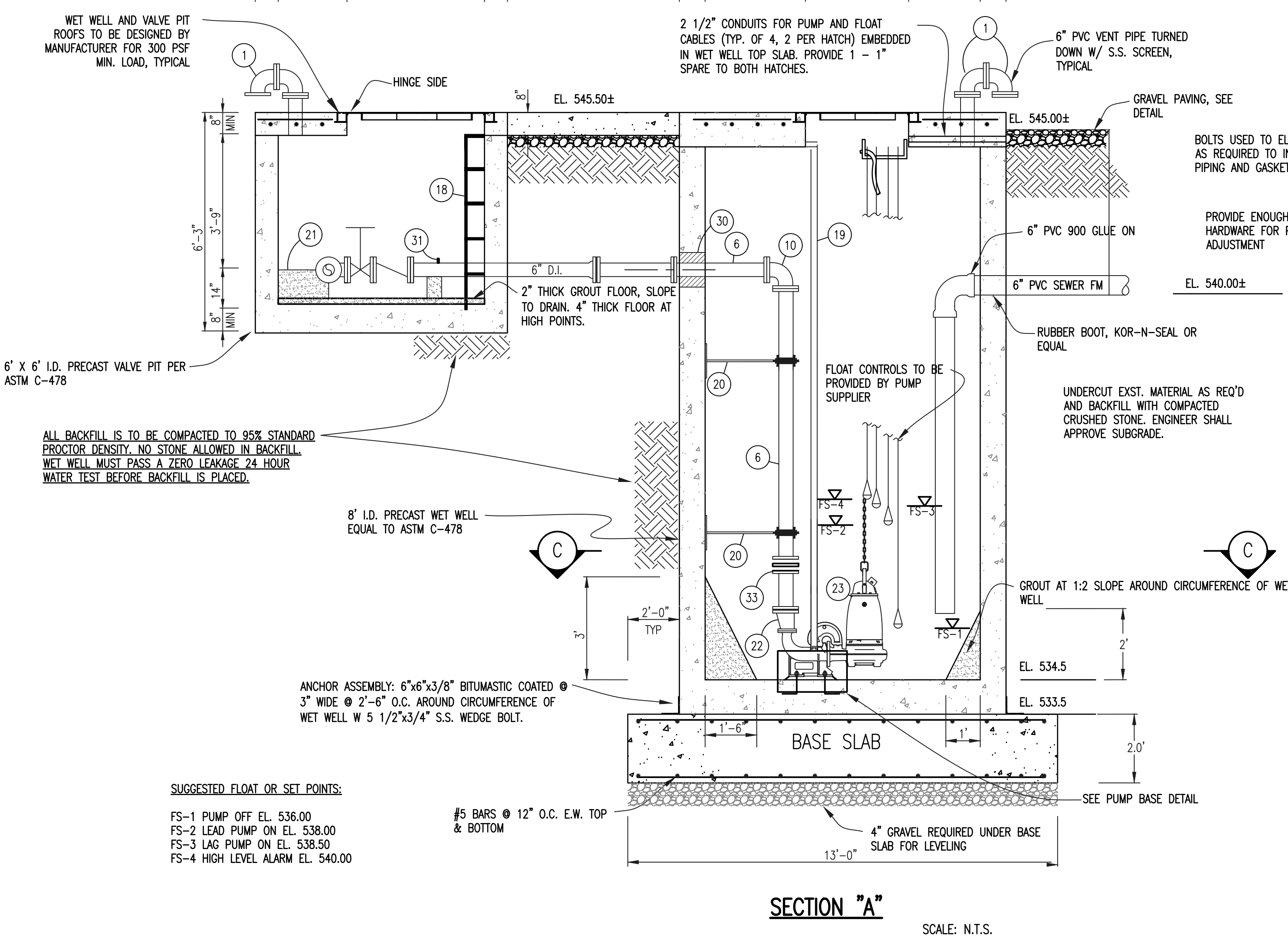


NOTES:

- SAFETY IS THE RESPONSIBILITY SOLELY OF THE CONTRACTOR. THE ENGINEER IS NOT RESPONSIBLE FOR SAFETY NOR THE MEANS AND METHODS OF THE CONTRACTOR.
- SEE ELECTRICAL PLAN FOR POWER ROUTING.
- PUMP EQUIPMENT SHALL BE CONSTRUCTED TO MEET EXPLOSION PROOF REQUIREMENTS FOR USE IN HAZARDOUS LOCATIONS DEFINED AS CLASS 1, DIVISION 1, GROUPS C AND D (GASES AND VAPORS), CLASS 2, DIVISION 1, GROUPS E AND G (DUSTS), CLASS 3, DIVISION 1 (FIBERS AND FLYINGS). ALL EQUIPMENT SHALL BE APPROVED AND LABELED BY FACTORY MUTUAL SYSTEMS OR OTHER ENGINEER APPROVED FIRMS.
- ALL PIPE OPENINGS THROUGH CONCRETE WALLS SHALL HAVE RUBBER BOOTS AS MANUFACTURED BY KOR-N-SEAL OR EQUAL UNLESS SPECIFIED OTHERWISE.
- ALL BOLTS, NUTS, AND HARDWARE SHALL BE 316 STAINLESS STEEL.
- ALL HATCHES SHALL BE LOCKABLE AND SHALL BE KEPT LOCKED DURING CONSTRUCTION.
- WET WELL SHALL BE TYPE II CEMENT.
- CONTRACTOR SHALL PROTECT THE STATION FROM FLOTATION DURING CONSTRUCTION.
- SHOP DRAWINGS SHALL BE APPROVED BY CITY OF ALEXANDER CITY BEFORE ORDERING OF MATERIALS.
- UNI-FLANGES, OR EQUIVALENT, WILL NOT BE ALLOWED.
- ALL MECHANICAL JOINT FITTINGS SHALL HAVE RETAINER GLANDS BY EBAA IRON OR EQUAL.
- ALL DUCTILE IRON PIPE IN THE VALVE PIT AND WET WELL SHALL HAVE EXTERIOR PRIME COATED WITH TNEC SERIES N140 (FOR A DRY FILM THICKNESS OF 6.0-8.0 MILS) AND TOP COATED WITH TNEC SERIES 446 PERMA-SHIELD MCO (FOR A DRY FILM THICKNESS OF 14.0-20.0 MILS), OR EQUAL. THIS SHALL ALSO INCLUDE THE VENT PIPES AND THE PUMP BASE ELBOWS.
- MEGALUG RESTRAINING GLANDS (EBAA IRON OR EQUAL) SHALL BE PROVIDED FOR ALL DUCTILE IRON MECHANICAL JOINT VALVES AND FITTINGS. CONCRETE KICKERS SHALL BE PROVIDED FOR ALL FITTINGS WHERE REQUIRED.

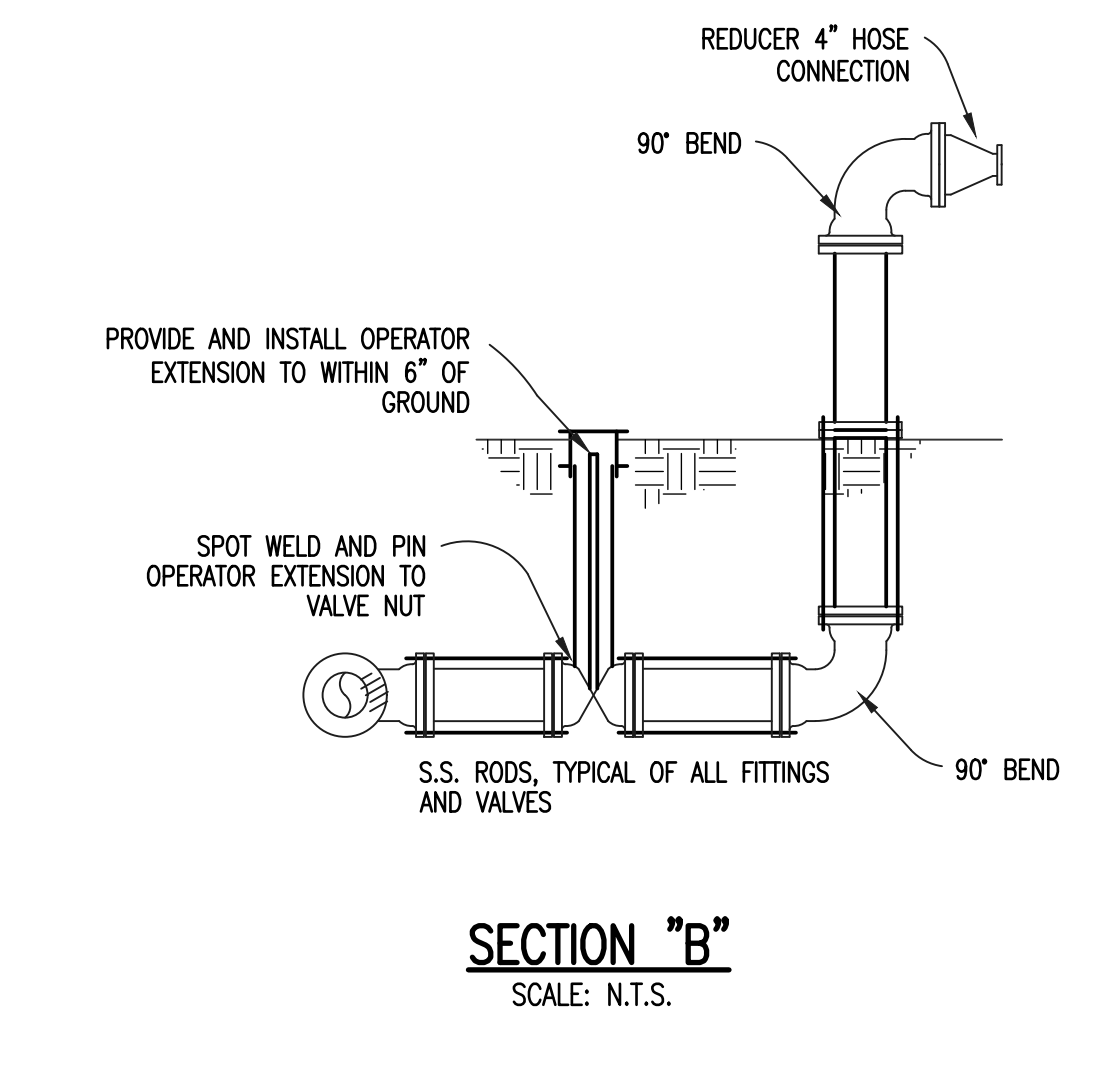
PARTIAL MATERIAL LIST

- 6" 90° BEND, FLG.
 - RESERVED
 - 6" TEE, FLG
 - 6" R.S. GATE VALVE, FLG, HANDWHEEL OPERATOR
 - 6" CHECK VALVE, FLG, LEVER ARM OPERATOR WITH AIR CUSHION
 - 6" SCH. 10 316L S.S., FLG X FLG, LENGTH AS REQ'D
 - 6" SPOOL, FLG, LENGTH AS REQ'D, D.I.
 - 6" WALL PIPE, FLG X MJ, LENGTH AS REQ'D, D.I.
 - 6" PIPE, FLG X PE, LENGTH AS REQ'D, D.I.
 - 6" S.S. 90° BEND, FLG. OR WELDED
 - RESERVED
 - 6" X 6" D.I. TEE, MJ
 - 6" D.I. RS GATE VALVE, MJ
 - 6" D.I. PIPE, PE X PE, LENGTH AS REQ'D
 - 4' X 4' LOCKABLE ALUMINUM HATCH, 300 PSF DESIGN LOAD W/ SAFETY GRATING
 - 3' X 2' LOCKABLE ALUMINUM HATCH, 300 PSF DESIGN LOAD W/ SAFETY GRATING
 - 4" MEGA-LUG
 - 18" ALUMINUM LADDER BOLTED TO WALL WITH INTEGRAL SAFETY GRAB BAR EXTENSIONS ON EACH SIDE OF LADDER, BY U.S.F. FABRICATION OR EQUAL
 - S.S. GUIDE BARS - SIZED PER MANUFACT. RECOMMENDATIONS
 - S.S. PIPE CLAMP AND 3/4" S.S. RODS ATTACHED TO S.S. WALL PLATE. ATTACH WALL PLATE TO WET WELL WALL WITH S.S. EXPANSION ANCHORS.
 - CONCRETE THRUST BLOCK
 - 4" X 6" SCH. 10 316L S.S. INCREASER, ECCENTRIC FLANGE.
 - FLYGT SUBMERSIBLE PUMP WITH BASE ELBOW AND 316 S.S. LIFTING CHAIN, TYP. OF 2
 - 6" D.I. 90° BEND, MJ
 - RESERVED
 - 6" D.I. PIPE, FLG X PE, CTSIF
 - 6" D.I. 90° BEND, FLG
 - VALVE LID BOX
 - CONCRETE VALVE PAD/MARKER
 - DOUBLE LINK SEAL AS REQUIRED FOR 4" SS PIPE. CORE OR CAST OPENING IN CONCRETE AS REQUIRED.
 - TAP AND GAUGE ASSEMBLY, SEE DETAIL
 - S.S. 1" FILLER FLANGE (MAY BE OMITTED DURING FINAL ASSEMBLY)
 - 6" X 4" D.I. ECCENTRIC REDUCER, FLG
 - FLANGED X BAUER QUICK RELEASE COUPLING, SIZE AS REQUIRED
 - BAUER COUPLING CAP/COVER
- NOTE: PARTIAL MATERIAL LIST ITEMS 34 THRU 37 ARE RESERVED



PUMP CRITERIA

| PUMP | FLOW | HEAD |
|-----------------|---------|----------|
| FLYGT NP3171 SH | 226 GPM | 210' TDH |



Municipal Consultants, Inc.
200 Century Park, South, Suite 212
Birmingham, Alabama 35226
(205) 822-0387

THE CITY OF ALEXANDER CITY
MULTI AGENCY WASTEWATER SOLUTION
PROJECT "B" HIGHWAY 128 SEWER FORCE MAIN
BID #24-03 (SRF PROJECT CS-010329-05)
2023

ABAMA
LICENSED PROFESSIONAL ENGINEER
NO. 73366
S. COLEMAN

10/02/2023
NOT VALID WITHOUT SIGNATURE

BAR = 1"

| | | |
|-------------|------------------|---------------|
| Title | STANDARD DETAILS | |
| | BID SET | (ADDENDUM #1) |
| Drawing | 10-2023 | NONE |
| Project No. | 09 | |
| Date | | |
| Scale | | |
| Sheet | | |

BMP GENERAL NOTES:

THE FOLLOWING REQUIREMENTS ARE TO BE CONSIDERED MINIMUM STANDARDS. THE CONTRACTOR IS SOLELY RESPONSIBLE FOR PROVIDING EROSION AND SEDIMENT CONTROL IN ACCORDANCE WITH ALL FEDERAL, STATE, AND LOCAL LAWS, CODES AND REGULATIONS. THE CONTRACTOR SHALL OBTAIN AN NPDES PERMIT FOR THE PROPOSED WORK AS REQUIRED BY THE ALABAMA DEPARTMENT OF ENVIRONMENTAL MANAGEMENT (ADEM). BY BIDDING THE PROJECT, THE CONTRACTOR IS CERTIFYING THAT IF AWARDED THE CONTRACT, HE WILL BE THE SOLE PERMITEE ON THIS PERMIT AND THAT HE SHALL INDEMNIFY THE OWNER AGAINST AND SHALL BE SOLELY RESPONSIBLE FOR ANY FINES OR MONETARY DAMAGES ASSOCIATED WITH STORMWATER RUNOFF AND CONTROL.

1. THE CONTRACTOR SHALL IMPLEMENT APPROPRIATE BEST MANAGEMENT PRACTICES (BMP'S) FOR THE PREVENTION AND CONTROL OF NONPOINT SOURCES OF POLLUTANTS DURING AND AFTER PROJECT IMPLEMENTATION. THE CONTRACTOR, AT A MINIMUM, MUST IMPLEMENT BMP'S AS PROVIDED IN THE ALABAMA HANDBOOK FOR EROSION CONTROL, SEDIMENT CONTROL & STORMWATER MANAGEMENT ON CONSTRUCTION SITES & URBAN AREAS, AS AMENDED, AND THE EPA STORMWATER POLLUTION PREVENTION FOR CONSTRUCTION ACTIVITIES—DEVELOPING POLLUTION PREVENTION PLANS AND BEST MANAGEMENT PRACTICES, AS AMENDED. THE EROSION CONTROL DEVICES SHOWN ON THIS PLAN ARE A MINIMUM. ADDITIONAL DEVICES SHALL BE INSTALLED AT NO ADDITIONAL COST TO THE OWNER AS REQ'D TO PREVENT SILTATION, EROSION, & OTHER DEGRADATION OR POLLUTION TO SITE OR ADJACENT PROPERTIES, STREAMS, DITCHES, PUBLIC ROADWAYS, ETC.

2. SITE GRADING SHALL BE MAINTAINED SO THAT NO SLOPE DRAINAGE ENTERS EXCAVATED OR DISTURBED AREAS.

3. TO THE EXTENT PRACTICAL, THE CONTRACTOR SHALL SCHEDULE HIS ACTIVITIES TO MINIMIZE THE AMOUNT OF AREA DISTURBED AT ANY ONE TIME.

4. ALL STOCKPILE EXCAVATED MATERIAL SHALL BE GRASSED OR COVERED WITHIN 72 HOURS OF STOCKPILING. GRASSING AND FERTILIZATION OF STOCKPILED SOILS SHALL BE AS PER THE ALABAMA HANDBOOK FOR EROSION CONTROL, SEDIMENT CONTROL & STORMWATER MANAGEMENT ON CONSTRUCTION SITES & URBAN AREAS. SEED RATES SPECIFIED IN THE MANUAL SHALL BE DOUBLED.

5. CONTRACTOR SHALL AS A MINIMUM INSPECT STORMWATER CONTROLS ONCE EVERY TWO WEEKS AND FOLLOWING A 1/2" OR GREATER RAINFALL IN ANY 24 HOUR PERIOD. SILT FENCING SHALL ALSO BE CHECKED WHEN WIND GUSTS EXCEED 25 MPH. DEFICIENCIES FOUND IN STORMWATER CONTROLS SHALL BE CORRECTED IMMEDIATELY. THE CONTRACTOR SHALL MAINTAIN A LOG OF ALL INSPECTION ACTIVITIES.

6. THE CONTRACTOR SHALL INSTALL SILT FENCING AROUND THE PROJECT PERIMETER AS REQUIRED PRIOR TO COMMENCING PROJECT. IN THE EVENT THAT THE PROJECT REQUIRES TEMPORARY CHANNELIZATION OF STORMWATER RUNOFF, THE CONTRACTOR SHALL CONSTRUCT AND MAINTAIN APPROPRIATE BMP CONTROLS (SETTLING BASINS, CHECK DAMS, ETC.)

7. PERMANENT VEGETATION OF ALL DISTURBED AREAS IS REQUIRED. ONCE ALL LAND DISTURBANCES HAVE CEASED & ALL DISTURBED AREAS ARE PERMANENTLY STABILIZED, EROSION CONTROL DEVICES SHALL BE REMOVED.

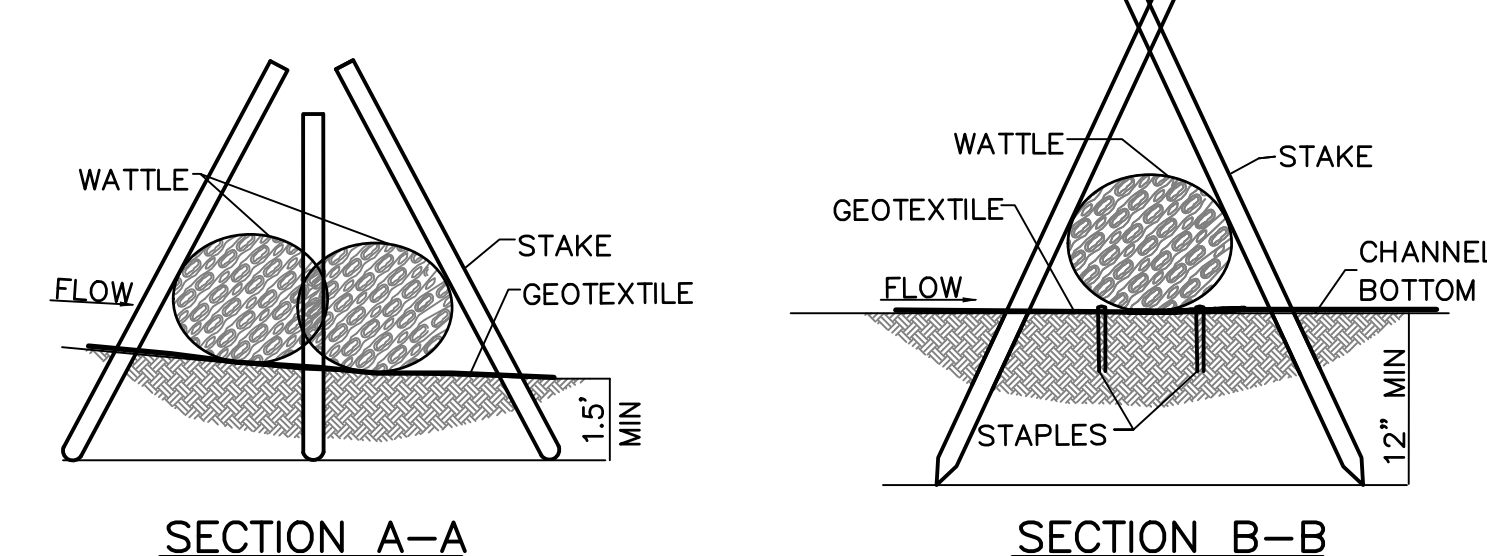
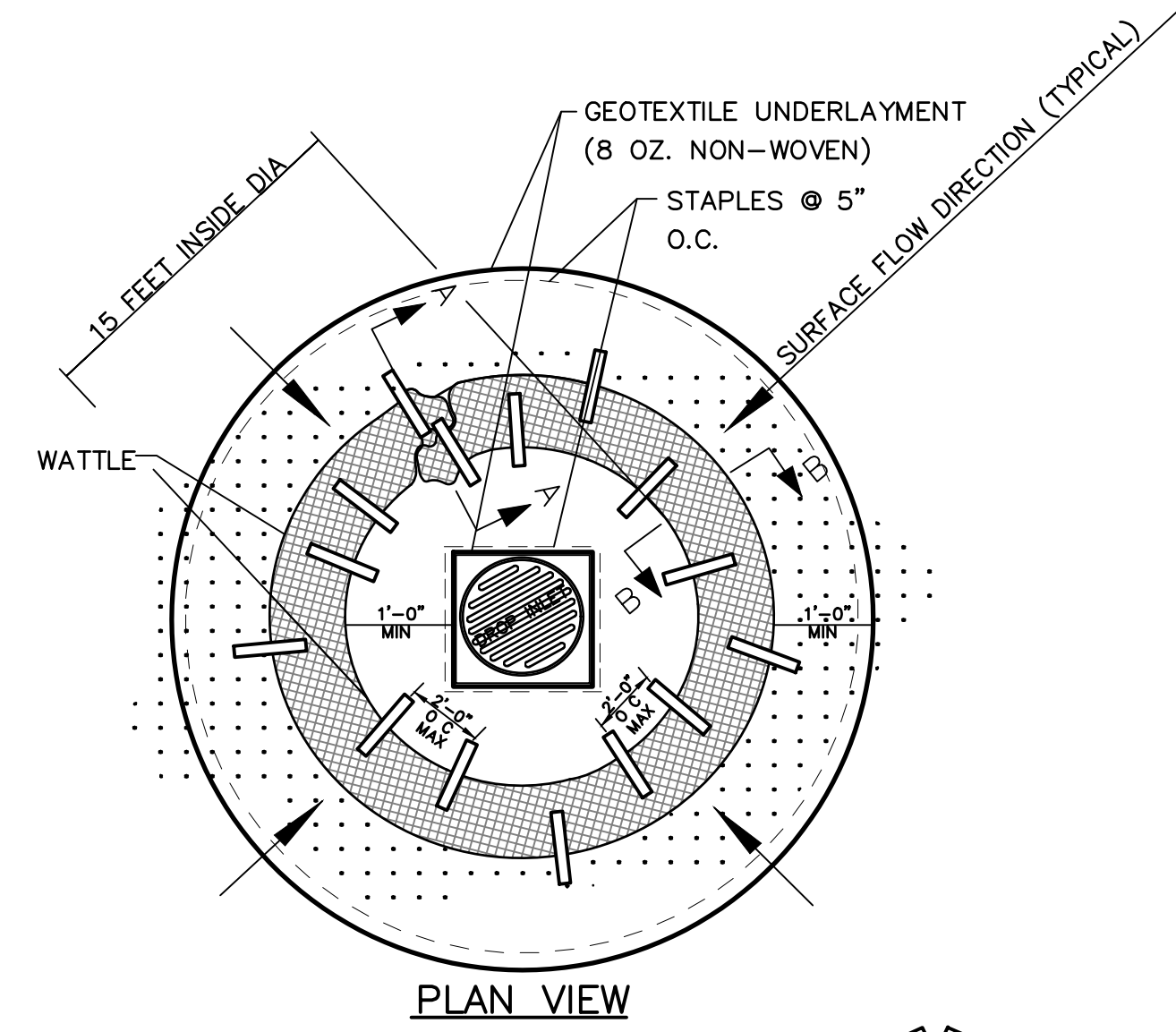
8. THE CONTRACTOR SHALL REMOVE ANY SEDIMENT TRACKED ON PUBLIC ROADWAYS IMMEDIATELY.

9. ALL DISTURBED AREAS LEFT INACTIVE FOR LONGER THAN 13 DAYS SHALL BE TEMPORARILY GRASSED OR COVERED TO PREVENT EROSION.

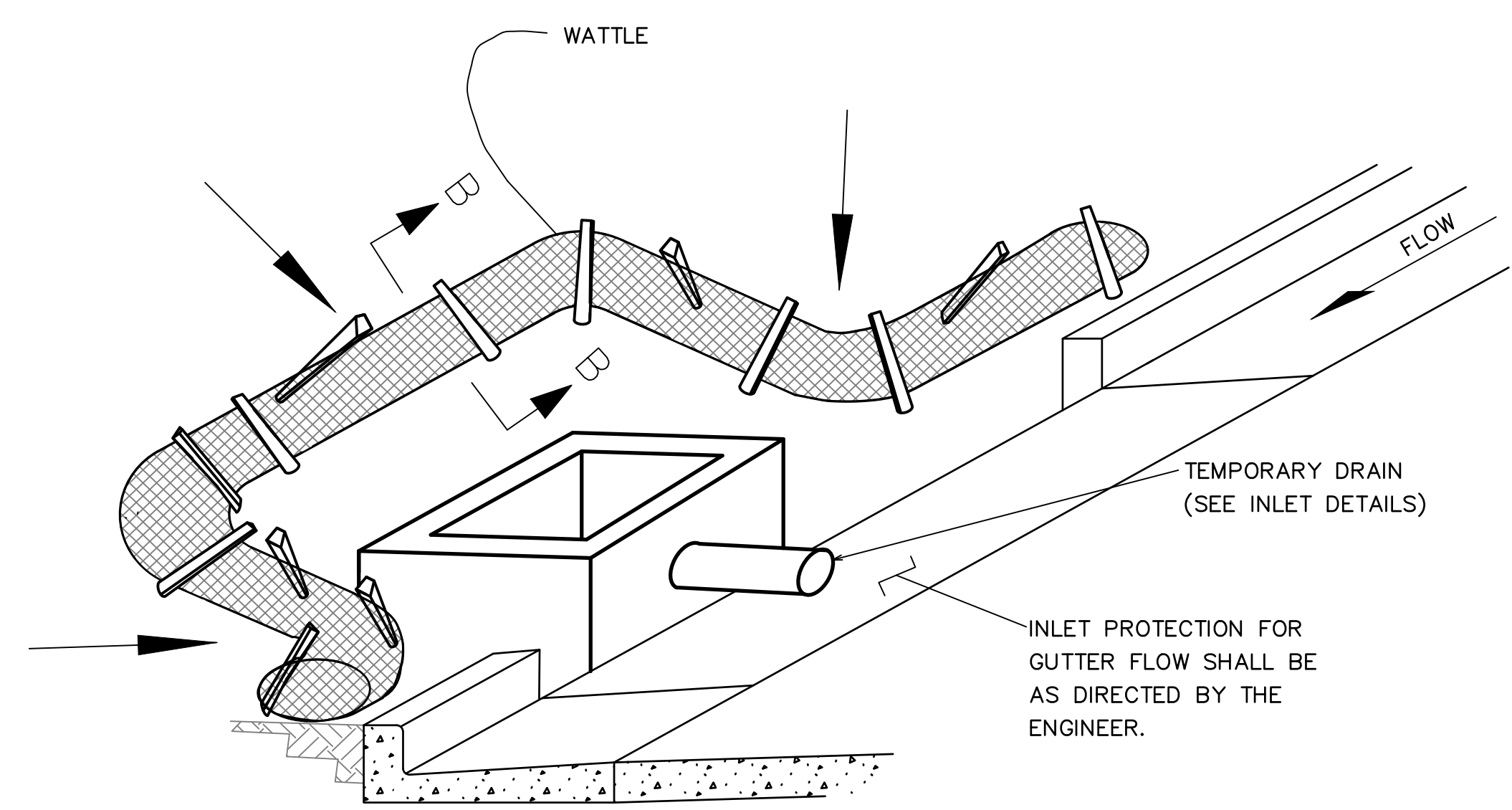
10. PERMANENT TURF REINFORCEMENT MATS ARE REQUIRED ON ALL SLOPES 2:1 OR STEEPER, AS WELL AS ALL DITCH LINES & SIDES.

11. BMP MEASURES MAY BE SHOWN OUTSIDE OF CONSTRUCTION LIMITS AND/OR RIGHTS OF WAY FOR CLARITY. CONTRACTOR SHALL NOT INSTALL BMP'S BEYOND PROJECT BOUNDARIES.

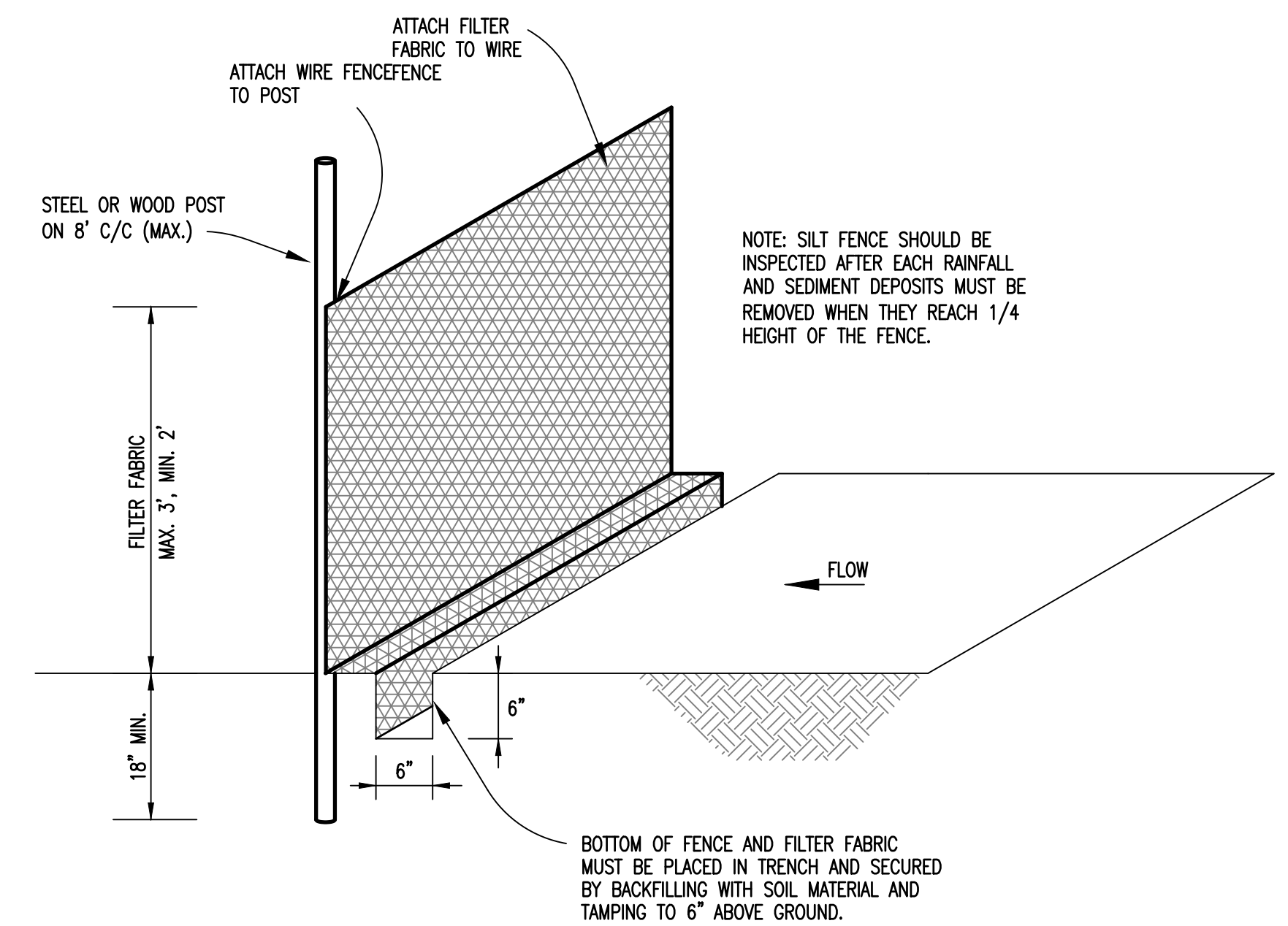
12. CONTRACTOR IS RESPONSIBLE FOR THE RENEWAL OF ALL NPDES PERMITS AS REQUIRED FOR THE PROJECT.



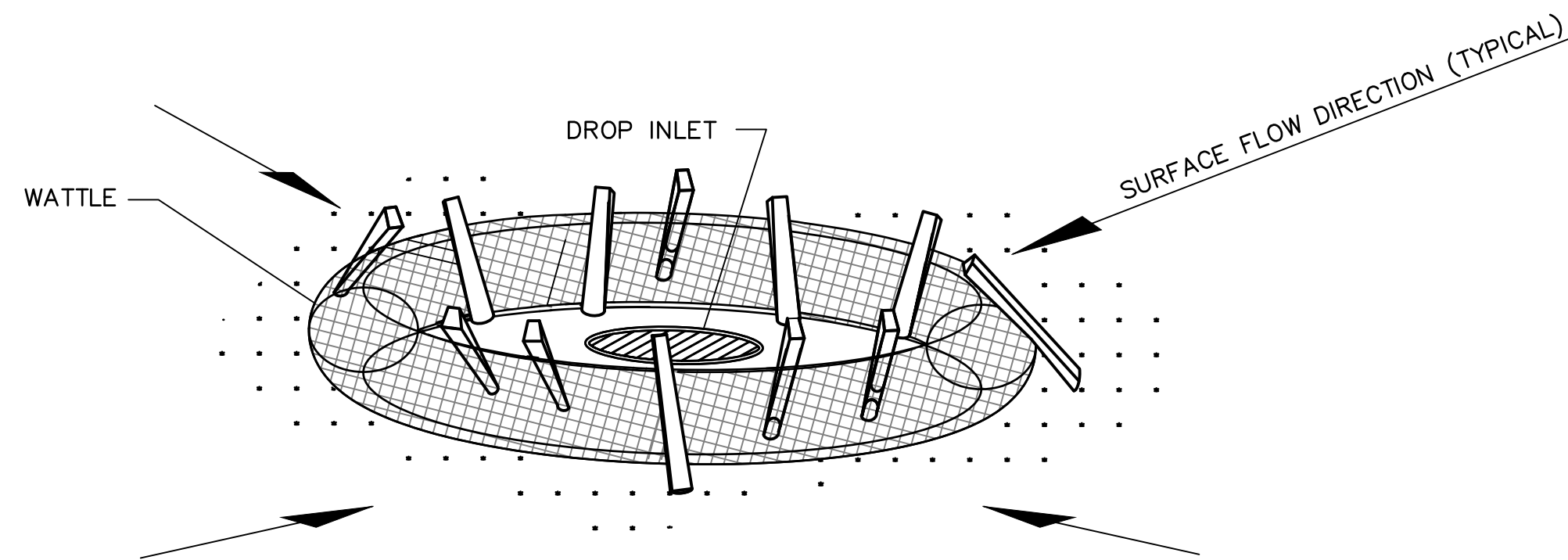
INLET WATTLE PROTECTION - WATTLE
SCALE: N.T.S.



CURB INLET PROTECTION (STAGE 2)
SINGLE OR DOUBLE WING INLET
SCALE: N.T.S.

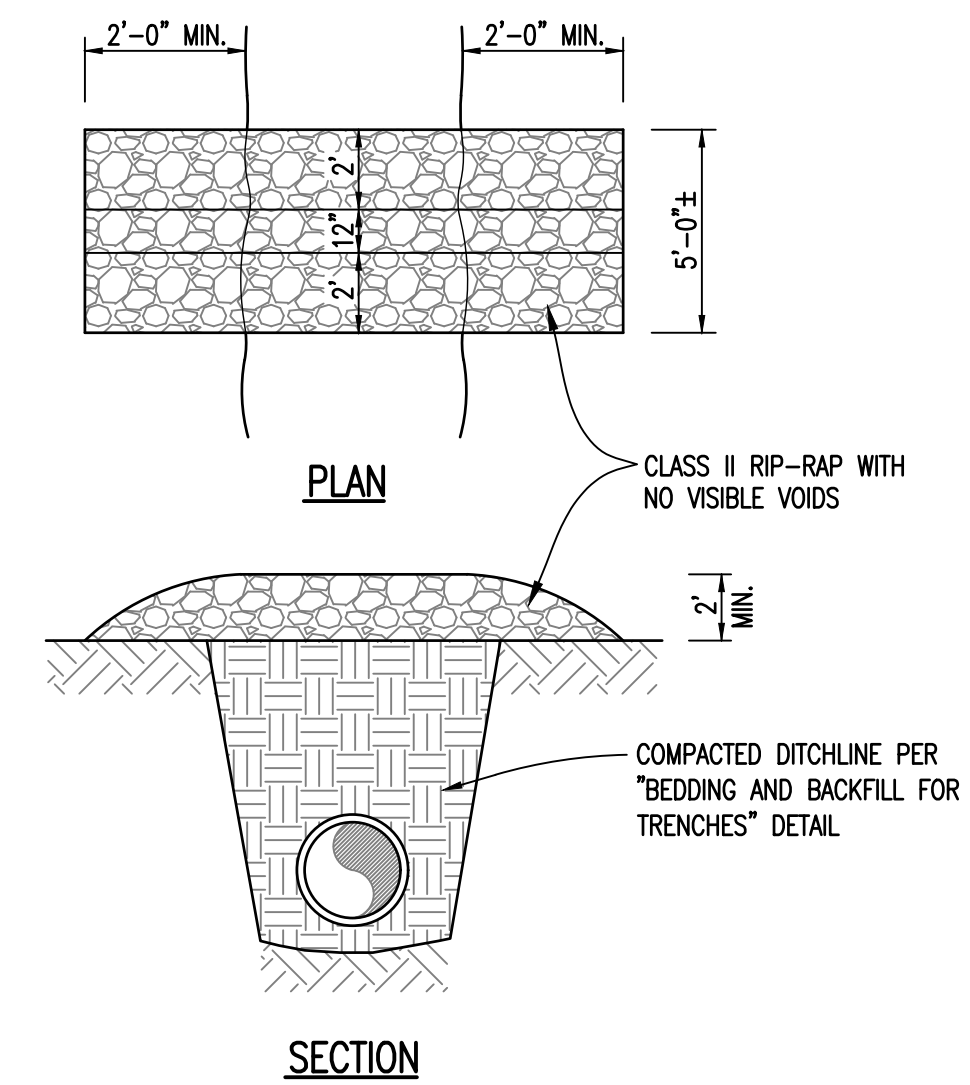


SILT FENCE DETAIL
SCALE: N.T.S.



DROP INLET PROTECTION
SCALE: N.T.S.

- NOTES:
1. ANCHORING STAKES SHALL BE SIZED, SPACED, AND BE OF A MATERIAL THAT EFFECTIVELY SECURES THE WATTLE. STAKE SPACING SHALL BE A MAXIMUM OF TWO FEET.
 2. OVERLAP ENDS OF WATTLES PER MANUFACTURERS RECOMMENDATIONS (1"MIN, 3"MAX).
 3. PLACE STAPLES ON BOTH SIDES OF WATTLE AT 6" SPACING.



RIP-RAP DITCH CHECK DETAIL
SCALE: N.T.S.

NOTE:
EROSION CONTROL WITHIN ROW SHOULD ADHERE TO ALDOT STANDARDS

| | | | |
|---------|-------------|-----------------------|-------|
| Title | | STANDARD DETAILS | |
| Drawing | Project No. | Date | Scale |
| | 10-2023 | NONE | D7 |
| Sheet | | BID SET (ADDENDUM #1) | |