

RESOLUTION

To Authorize the Mayor to Enter into an Agreement with Alabama Power Company for Light Emitting Diode (LED) Lighting Services

WHEREAS, the City of Alexander City currently has High Intensity Discharge (HID) fixtures located throughout the city; and

WHEREAS, Alabama Power Company has presented a proposal to update the HID fixtures to LED; and

WHEREAS, the current monthly rate for lighting should decrease substantially with the replacement of the existing lighting.

NOW, THEREFORE, BE IT RESOLVED, by the City Council of the City of Alexander City that the five-hundred ten (51) street lights, as shown on Exhibit A will be replaced with LED lighting.

BE IT FURTHER RESOLVED that the Mayor is hereby authorized to enter into a Master Contract for Lighting Services with Alabama Power for the replacement of said street lights.

ADOPTED THIS 15TH DAY OF MAY, 2023.

FOR PUBLIC RELEASE

By: Audrey "Buffy" Colvin, President
Alexander City Council

AUTHENTICATED THIS 15TH DAY OF MAY, 2023.

FOR PUBLIC RELEASE

By: Stephanie J. Southerland
City Clerk

~~APPROVED:~~

FOR PUBLIC RELEASE

Curtis "Woody" Baird
By: Curtis "Woody" Baird
Mayor

Yeas: Tapley, Colvin, Hardy, C. Brown, E. Brown, Keel

Nays: None

RESOLUTION BOOK 23-69

CITY OF ALEXANDER CITY LED STREETLIGHT PROJECT SUMMARY - COMPARABLE FIXTURE UPGRADE

Current HID Fixture Description - BEFORE	HID Fixture Count	Total Price Per Fixture	Total Monthly HID Price	LED Fixture Description - AFTER	LED Fixture Count	Total Price Per Fixture	Total Monthly LED Price	Total Increase or Decrease
Alabama Power Owned Fixtures:				Alabama Power Owned Fixtures:				
Open Bottom 100W HPS	97	\$10.10	\$979.70	Cobra Head - 5,200-7,200 Initial Lumens	0	\$10.61	\$0.00	(\$979.70)
Open Bottom 175W MV	315	\$10.88	\$3,427.20	Cobra Head - 5,200-7,200 Initial Lumens	0	\$10.61	\$0.00	(\$3,427.20)
Cobrahead 70W HPS	0	\$8.83	\$0.00	Cobra Head - 3,700-4,700 Initial Lumens	445	\$7.47	\$3,324.15	\$3,324.15
Cobrahead 100W HPS	1	\$10.75	\$10.75	Cobra Head - 5,200-7,200 Initial Lumens	1	\$10.61	\$10.61	(\$0.14)
Cobrahead 150W HPS	3	\$14.65	\$43.95	Cobra Head - 8,500-11,000 Initial Lumens	12	\$14.43	\$173.16	\$129.21
Cobrahead 250W HPS	4	\$20.84	\$83.36	Cobra Head - 14,000-19,000 Initial Lumens	9	\$20.02	\$180.18	\$96.82
Cobrahead 400W HPS	1	\$28.58	\$28.58	Cobra Head - 27,000-34,000 Initial Lumens	2	\$27.55	\$55.10	\$26.52
Cobrahead 250W MV	13	\$14.44	\$187.72	Cobra Head - 8,500-11,000 Initial Lumens	0	\$14.43	\$0.00	(\$187.72)
Cobrahead 400W MV	1	\$23.03	\$23.03	Cobra Head - 14,000-19,000 Initial Lumens	0	\$20.02	\$0.00	(\$23.03)
Off Road 250W HPS	1	\$24.49	\$24.49	Cobra Head - 14,000-19,000 Initial Lumens	0	\$20.02	\$0.00	(\$24.49)
Cutoff Colonial 70W HPS	0	\$15.34	\$0.00	LED Decorative – 4,001 – 5,500 Initial Lumens	20	\$12.44	\$248.80	\$248.80
Cutoff Colonial 150W HPS	0	\$20.82	\$0.00	LED Decorative – 5,501 – 7,500 Initial Lumens	21	\$14.38	\$301.98	\$301.98
Alabama Power Owned Fixtures - Buy Down to Standard:				Alabama Power Owned Fixtures - Buy Down to Standard:				
Alabama Power Owned Poles - Buy Down to Standard:				Alabama Power Owned Poles - Buy Down to Standard:				
Total Alabama Power Owned Fixtures and Poles:	436		\$4,808.78	Total Alabama Power Owned Fixtures and Poles:	510		\$4,293.98	(\$514.80)
Customer Owned Fixtures:				Customer Owned Fixtures:				
Total Customer Owned:			\$0.00	Total Customer Owned:			\$0.00	\$0.00
Additional Facilities			\$101.88	Additional Facilities				(\$101.88)
Totals:	436		\$4,910.66		510		\$4,293.98	(616.68)

Notes:

Information for discussion purposes only

Fixture totals are estimated based on current APC billing records and field review. Final quantities and pricing may vary depending on actual LED fixture installed.

Total Monthly LED pricing based on Master Contract for Lighting Services Fixtures Exhibit

LED - Light Emitting Diode

HID - High Intensity Discharge

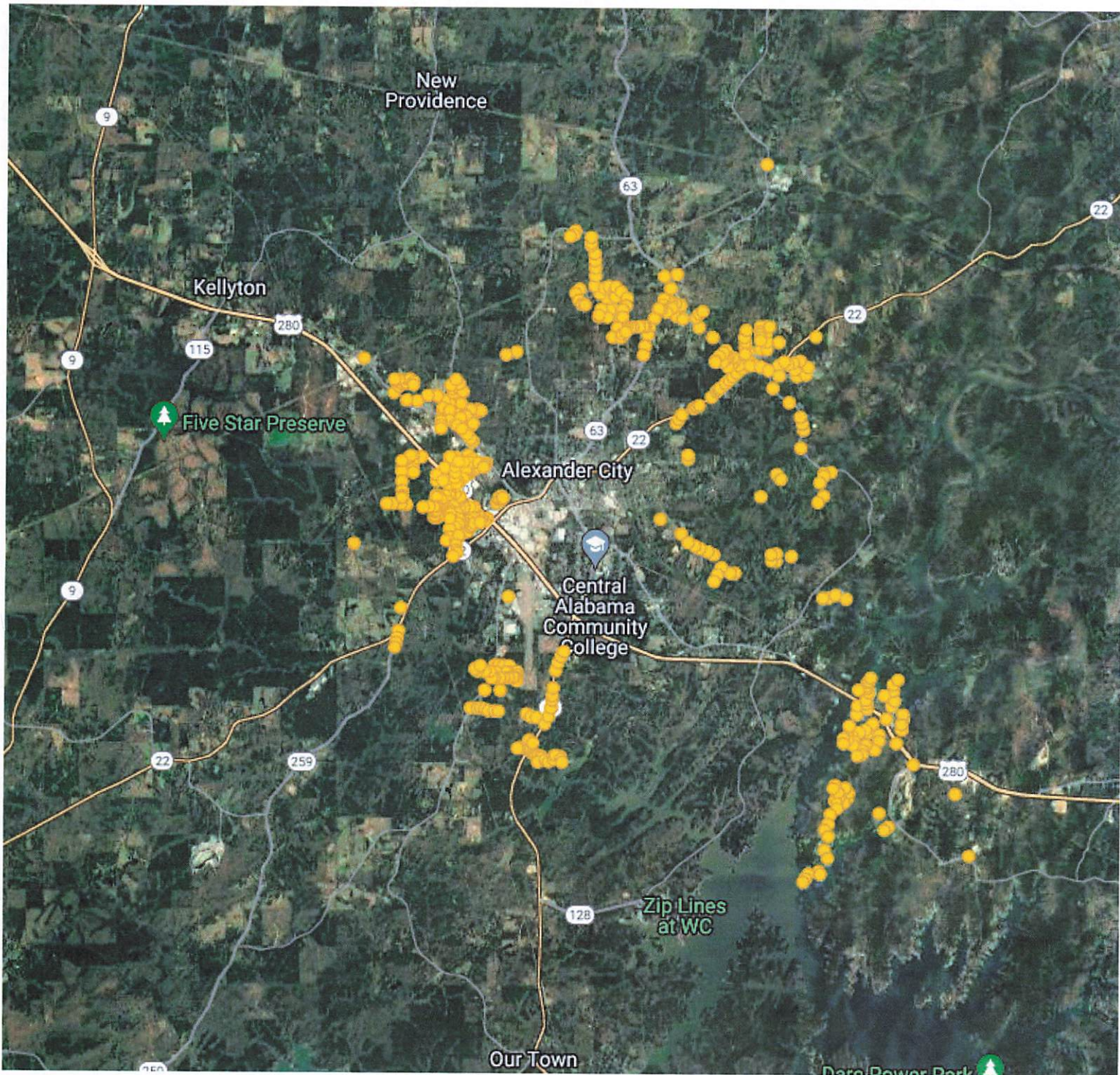
MV - Mercury Vapor

HPS - High Pressure Sodium

MH - Metal Halide

W - Watt

7



7