

ORDINANCE NO. 2023-02

An Ordinance to Accept a Permanent Sewer Easement Infrastructure from Russell Brands, LLC

BE IT ORDAINED by the City Council of the City of Alexander City, Alabama, as follows:

SECTION 1. That the City is hereby authorized to accept the sewer line to have and to hold unto the City and its successors and assigns.

Legal Description: Exhibit A, Boundary Survey Russell Brands Parcel No. 45

SECTION 2. If any paragraph, section, subsection, or provision of this ordinance be declared invalid in a court of competent jurisdiction for any reason, it shall not affect the remainder of the ordinance as pertains to its validity or to other applications.

SECTION 3. Any ordinance or provisions of ordinances in conflict with the provisions of this ordinance are hereby repealed and rescinded insofar as they conflict with the provisions of this ordinance.

This ordinance will be published in compliance with Section 11-45-3, Code of Alabama 1975.

This ordinance shall become immediately.

ADOPTED AND APPROVED this 3rd day of October, 2022.

ATTEST:


Amanda F. Thomas, City Clerk


Audrey "Buffy" Colvin, Council President


Curtis "Woody" Baird, Mayor

CERTIFICATION OF CITY CLERK

The undersigned, as City Clerk of the City of Alexander City, Alabama, hereby certifies that the foregoing is a true, correct and complete copy of **Ordinance No. 2023-02** which was adopted by the City Council on this 3rd day of October, 2022.

WITNESS MY SIGNATURE, as City Clerk of the City Alexander City, Alabama, under the seal thereof, this 3rd day of October, 2022.

Amanda F. Thomas
City Clerk of the
City of Alexander City, Alabama

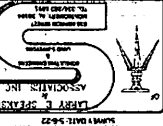
S E A L

Yeas: Tapley, Colvin, E. Brown, C. Brown, Keel

Nays: None

Publication Date: October 8, 2022

BOUNDARY SURVEY
RUSSELL BRANDS PARCEL NO. 45
RUSSELL CAMPUS
LOCATED IN THE SW 1/4 OF SECTION 33,
T-23-N, R-21-E
ALEXANDER CITY, ALABAMA
TALLAPOOSA COUNTY, ALABAMA



GENERAL NOTES:

1. UTILITIES SHOWN ACCORDING TO THE LOCATION, DIMENSIONS AND DEPTHS AS SHOWN ON THE PLANS AND AS PROVIDED BY THE SURVEYOR. THE SURVEYOR HAS NOT CHECKED THE LOCATION, DIMENSIONS AND DEPTHS OF THE UTILITIES SHOWN ON THE PLANS. THE SURVEYOR IS NOT LIABLE FOR DAMAGE TO UTILITIES OR PERSONS OR PROPERTY IN CONNECTION WITH THE SURVEY.

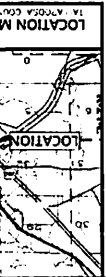
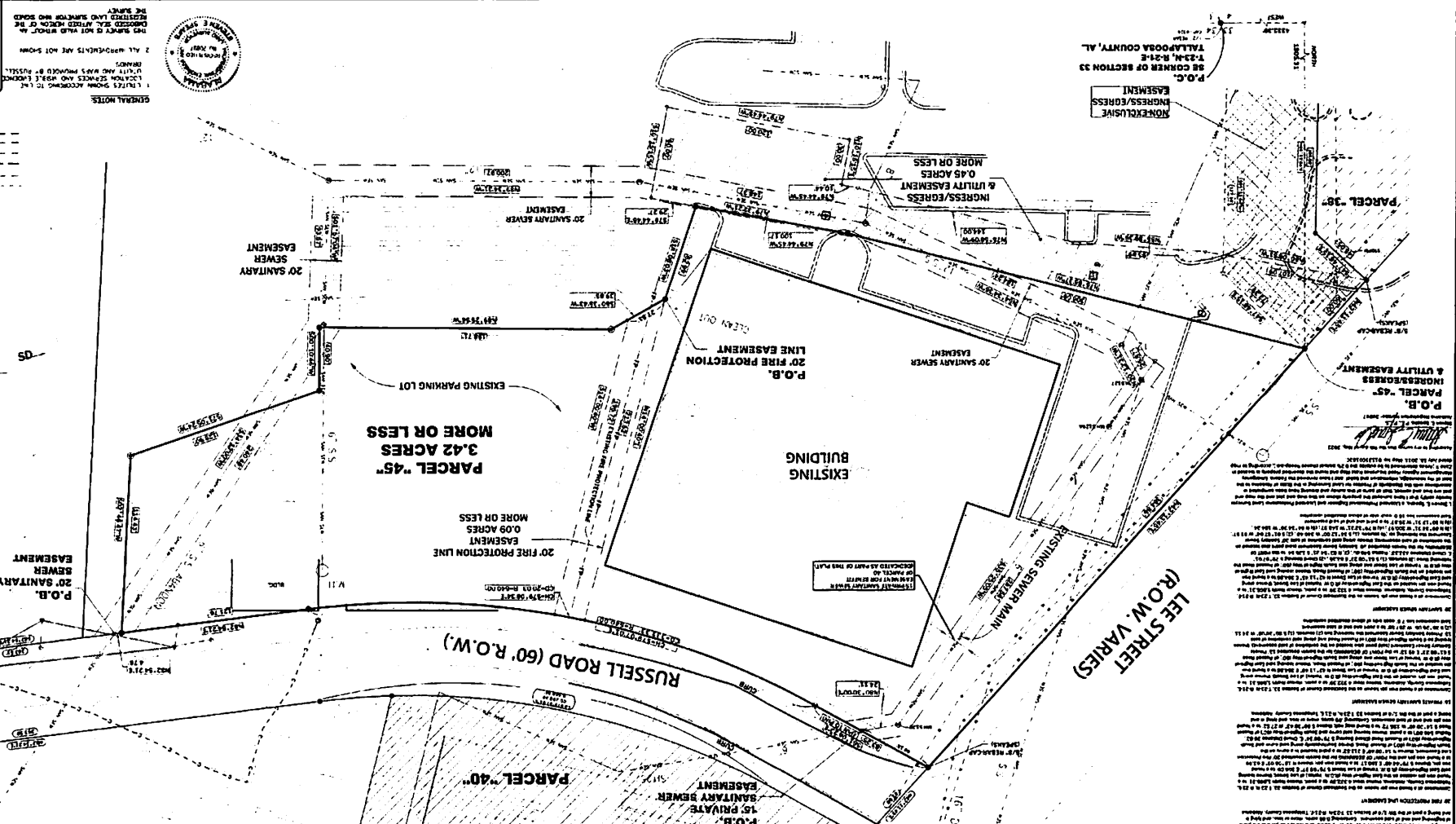
2. ALL DIMENSIONS ARE IN FEET AND INCHES.

3. ALL DIMENSIONS ARE TO THE CENTER OF THE LINE UNLESS OTHERWISE NOTED.

- LEGEND**
- 1/4" = 1' (FINE LINE)
 - 1/8" = 1' (MEDIUM LINE)
 - 1/2" = 1' (THICK LINE)
 - 1/4" = 1' (DOTTED LINE)
 - - - 1/4" = 1' (DASHED LINE)
 - - - 1/2" = 1' (LONG DASHED LINE)
 - - - 3/4" = 1' (TRIPLE DASHED LINE)
 - - - 1" = 1' (SQUARE WAVE LINE)
 - - - 1 1/2" = 1' (SQUARE WAVE LINE)
 - - - 2" = 1' (SQUARE WAVE LINE)
 - - - 3" = 1' (SQUARE WAVE LINE)
 - - - 4" = 1' (SQUARE WAVE LINE)
 - - - 6" = 1' (SQUARE WAVE LINE)
 - - - 8" = 1' (SQUARE WAVE LINE)
 - - - 10" = 1' (SQUARE WAVE LINE)
 - - - 12" = 1' (SQUARE WAVE LINE)
 - - - 14" = 1' (SQUARE WAVE LINE)
 - - - 16" = 1' (SQUARE WAVE LINE)
 - - - 18" = 1' (SQUARE WAVE LINE)
 - - - 20" = 1' (SQUARE WAVE LINE)
 - - - 24" = 1' (SQUARE WAVE LINE)
 - - - 30" = 1' (SQUARE WAVE LINE)
 - - - 36" = 1' (SQUARE WAVE LINE)
 - - - 42" = 1' (SQUARE WAVE LINE)
 - - - 48" = 1' (SQUARE WAVE LINE)
 - - - 60" = 1' (SQUARE WAVE LINE)
 - - - 72" = 1' (SQUARE WAVE LINE)
 - - - 84" = 1' (SQUARE WAVE LINE)
 - - - 96" = 1' (SQUARE WAVE LINE)
 - - - 108" = 1' (SQUARE WAVE LINE)
 - - - 120" = 1' (SQUARE WAVE LINE)
 - - - 144" = 1' (SQUARE WAVE LINE)
 - - - 168" = 1' (SQUARE WAVE LINE)
 - - - 192" = 1' (SQUARE WAVE LINE)
 - - - 216" = 1' (SQUARE WAVE LINE)
 - - - 240" = 1' (SQUARE WAVE LINE)
 - - - 264" = 1' (SQUARE WAVE LINE)
 - - - 288" = 1' (SQUARE WAVE LINE)
 - - - 312" = 1' (SQUARE WAVE LINE)
 - - - 336" = 1' (SQUARE WAVE LINE)
 - - - 360" = 1' (SQUARE WAVE LINE)
 - - - 384" = 1' (SQUARE WAVE LINE)
 - - - 408" = 1' (SQUARE WAVE LINE)
 - - - 432" = 1' (SQUARE WAVE LINE)
 - - - 456" = 1' (SQUARE WAVE LINE)
 - - - 480" = 1' (SQUARE WAVE LINE)
 - - - 504" = 1' (SQUARE WAVE LINE)
 - - - 528" = 1' (SQUARE WAVE LINE)
 - - - 552" = 1' (SQUARE WAVE LINE)
 - - - 576" = 1' (SQUARE WAVE LINE)
 - - - 600" = 1' (SQUARE WAVE LINE)
 - - - 624" = 1' (SQUARE WAVE LINE)
 - - - 648" = 1' (SQUARE WAVE LINE)
 - - - 672" = 1' (SQUARE WAVE LINE)
 - - - 696" = 1' (SQUARE WAVE LINE)
 - - - 720" = 1' (SQUARE WAVE LINE)
 - - - 744" = 1' (SQUARE WAVE LINE)
 - - - 768" = 1' (SQUARE WAVE LINE)
 - - - 792" = 1' (SQUARE WAVE LINE)
 - - - 816" = 1' (SQUARE WAVE LINE)
 - - - 840" = 1' (SQUARE WAVE LINE)
 - - - 864" = 1' (SQUARE WAVE LINE)
 - - - 888" = 1' (SQUARE WAVE LINE)
 - - - 912" = 1' (SQUARE WAVE LINE)
 - - - 936" = 1' (SQUARE WAVE LINE)
 - - - 960" = 1' (SQUARE WAVE LINE)
 - - - 984" = 1' (SQUARE WAVE LINE)
 - - - 1008" = 1' (SQUARE WAVE LINE)
 - - - 1032" = 1' (SQUARE WAVE LINE)
 - - - 1056" = 1' (SQUARE WAVE LINE)
 - - - 1080" = 1' (SQUARE WAVE LINE)
 - - - 1104" = 1' (SQUARE WAVE LINE)
 - - - 1128" = 1' (SQUARE WAVE LINE)
 - - - 1152" = 1' (SQUARE WAVE LINE)
 - - - 1176" = 1' (SQUARE WAVE LINE)
 - - - 1200" = 1' (SQUARE WAVE LINE)

LEGEND (continued)

- 1/2" = 1' (DOT)
- 3/4" = 1' (DOT)
- 1" = 1' (DOT)
- 1 1/2" = 1' (DOT)
- 2" = 1' (DOT)
- 3" = 1' (DOT)
- 4" = 1' (DOT)
- 6" = 1' (DOT)
- 8" = 1' (DOT)
- 10" = 1' (DOT)
- 12" = 1' (DOT)
- 14" = 1' (DOT)
- 16" = 1' (DOT)
- 18" = 1' (DOT)
- 20" = 1' (DOT)
- 24" = 1' (DOT)
- 30" = 1' (DOT)
- 36" = 1' (DOT)
- 42" = 1' (DOT)
- 48" = 1' (DOT)
- 60" = 1' (DOT)
- 72" = 1' (DOT)
- 84" = 1' (DOT)
- 96" = 1' (DOT)
- 108" = 1' (DOT)
- 120" = 1' (DOT)
- 144" = 1' (DOT)
- 168" = 1' (DOT)
- 192" = 1' (DOT)
- 216" = 1' (DOT)
- 240" = 1' (DOT)
- 264" = 1' (DOT)
- 288" = 1' (DOT)
- 312" = 1' (DOT)
- 336" = 1' (DOT)
- 360" = 1' (DOT)
- 384" = 1' (DOT)
- 408" = 1' (DOT)
- 432" = 1' (DOT)
- 456" = 1' (DOT)
- 480" = 1' (DOT)
- 504" = 1' (DOT)
- 528" = 1' (DOT)
- 552" = 1' (DOT)
- 576" = 1' (DOT)
- 600" = 1' (DOT)
- 624" = 1' (DOT)
- 648" = 1' (DOT)
- 672" = 1' (DOT)
- 696" = 1' (DOT)
- 720" = 1' (DOT)
- 744" = 1' (DOT)
- 768" = 1' (DOT)
- 792" = 1' (DOT)
- 816" = 1' (DOT)
- 840" = 1' (DOT)
- 864" = 1' (DOT)
- 888" = 1' (DOT)
- 912" = 1' (DOT)
- 936" = 1' (DOT)
- 960" = 1' (DOT)
- 984" = 1' (DOT)
- 1008" = 1' (DOT)
- 1032" = 1' (DOT)
- 1056" = 1' (DOT)
- 1080" = 1' (DOT)
- 1104" = 1' (DOT)
- 1128" = 1' (DOT)
- 1152" = 1' (DOT)
- 1176" = 1' (DOT)
- 1200" = 1' (DOT)



DEED RECORDS:

Reference is made to the following recorded documents in the Public Records Office of Tallapoosa County, Alabama:

- 1. Deed Book 20, Page 112, dated 10/11/21, recording the conveyance of Parcel No. 45 from Russell Brands to the present owner.
- 2. Deed Book 18, Page 234, dated 08/15/20, recording the conveyance of Parcel No. 45 from the original owner to Russell Brands.

Reference is also made to the following recorded documents in the Public Records Office of Tallapoosa County, Alabama:

- 1. Deed Book 20, Page 112, dated 10/11/21, recording the conveyance of Parcel No. 45 from Russell Brands to the present owner.
- 2. Deed Book 18, Page 234, dated 08/15/20, recording the conveyance of Parcel No. 45 from the original owner to Russell Brands.

The survey was conducted on or about 08/15/2020 and the boundaries are shown as they exist on that date. The surveyor has not checked the location, dimensions and depths of the utilities shown on the plans. The surveyor is not liable for damage to utilities or persons or property in connection with the survey.

BE CORNER OF SECTION 33
T-23-N, R-21-E
TALLAPOOSA COUNTY, AL.